

---

# **EVOLUTION DU PLAN D'ECHANTILLONNAGE SECTORIEL**

~~~~

## **NIVEAU 1**

~~~~

# **EVOLUTIE VAN HET SECTORAAL BEMONSTERINGSPLAN**

# APERCU 2004 – 2009 OVERZICHT

	2004	2005	2006	2007	2008	15/06/2009
<b>PARTICIPANTS / DEELNEMERS</b>	<b>228</b>	<b>291</b>	<b>313</b>	<b>320</b>	<b>327</b>	<b>324</b>
<b>TONNAGES</b>	<b>2.416.097</b>	<b>2.632.294</b>	<b>2.784.592</b>	<b>3.398.253</b>	<b>3.043.562</b>	<b>3.136.864</b>
Waarvan / dont						
* Tarwe	1.641.336	1.861.224	1.936.589	1.950.882	1.931.278	1.890.291
* Gerst	374.883	329.762	328.188	390.135	477.757	461.180
* Maïs	255.202	313.227	343.324	802.530	480.971	612.781
* Maïs CCM (+ verzuurd)	22.138	14.079	10.915	56.015	58.823	57.224
* Haver	16403	19.175	18.521	42.502	43.075	54.998
* Rogge	5.012	2.989	7.695	2.192	1.527	2.082
* Triticale	12.930	22.369	25.605	14.578	13.100	12.701
* Spelt	17.807	23.614	33.905	27.882	37.031	45.607
* Erwtten	70.386	45.855	79.851	111.538	0	0
<b>ANALYSES</b>	<b>718</b>	<b>598</b>	<b>446</b>	<b>598</b>	<b>647</b>	<b>652</b>
Waarvan / dont						
* Schimmels / Moisissures	149	113	0	0	0	0
* Mycotoxines	290	238	238	329	336	339
* Pesticides	279	247	208	269	311	313

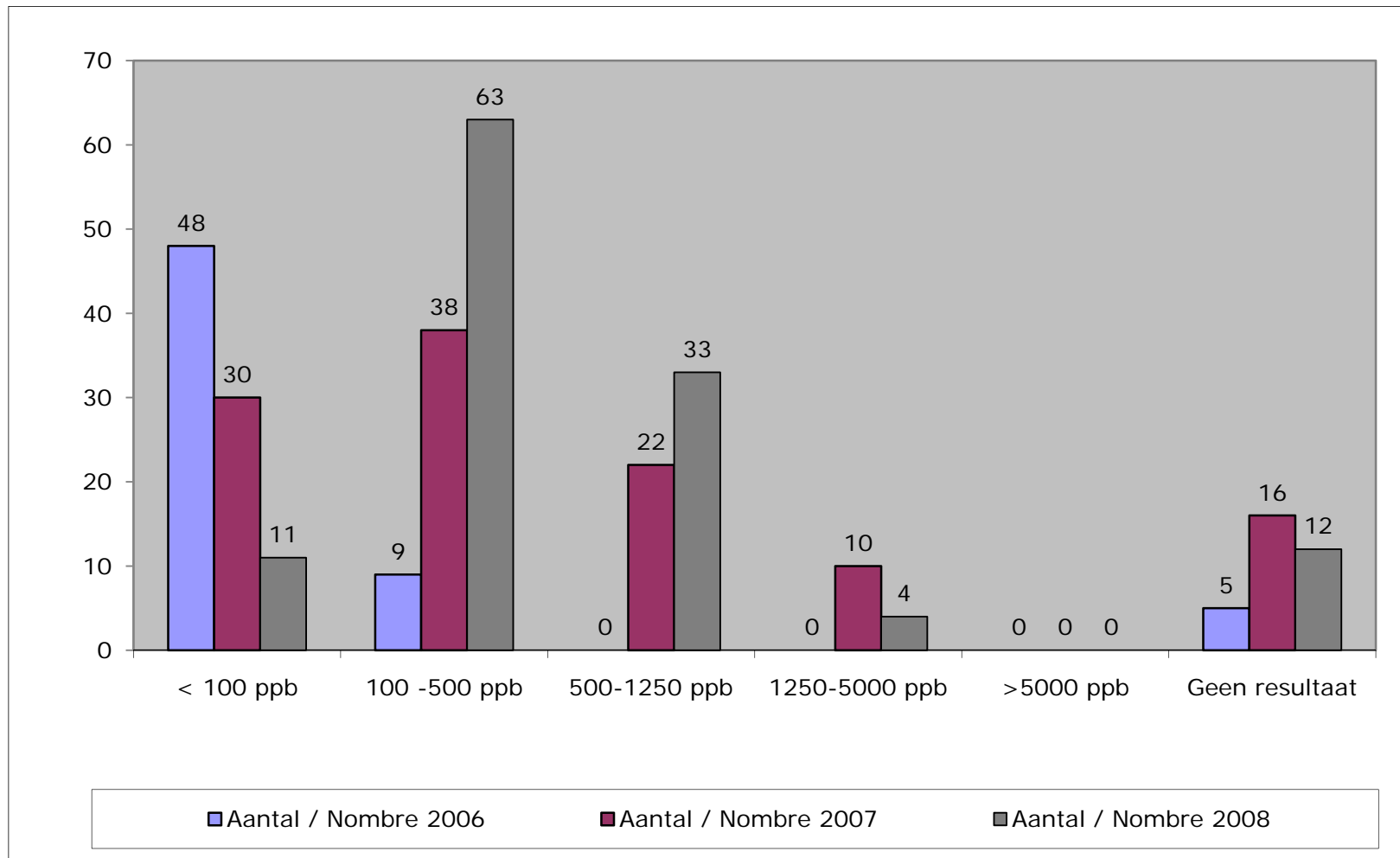
---

# **Comparaison des résultats d'analyses**

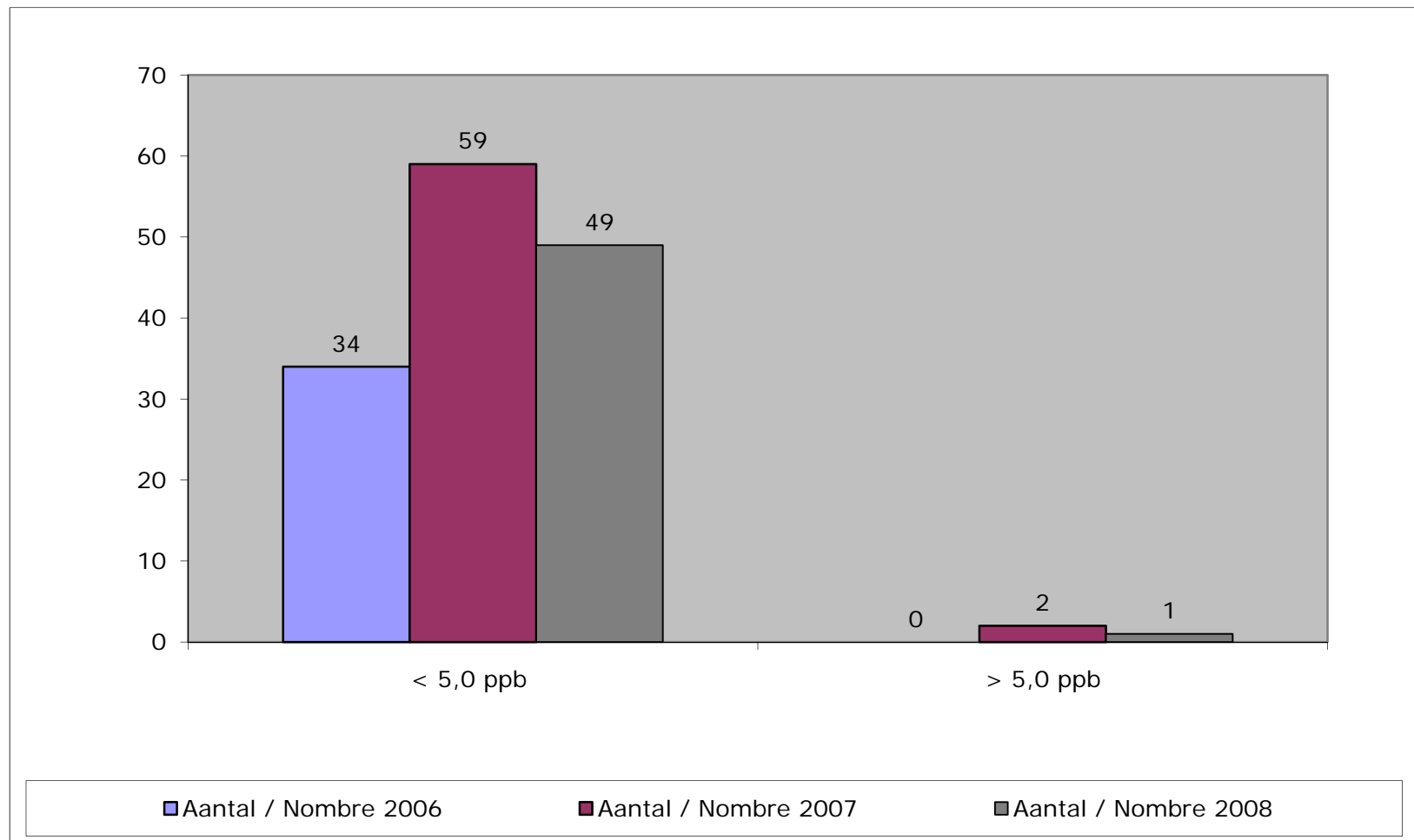
**2006 – 2007 - 2008**

**Vergelijking analyseresultaten**

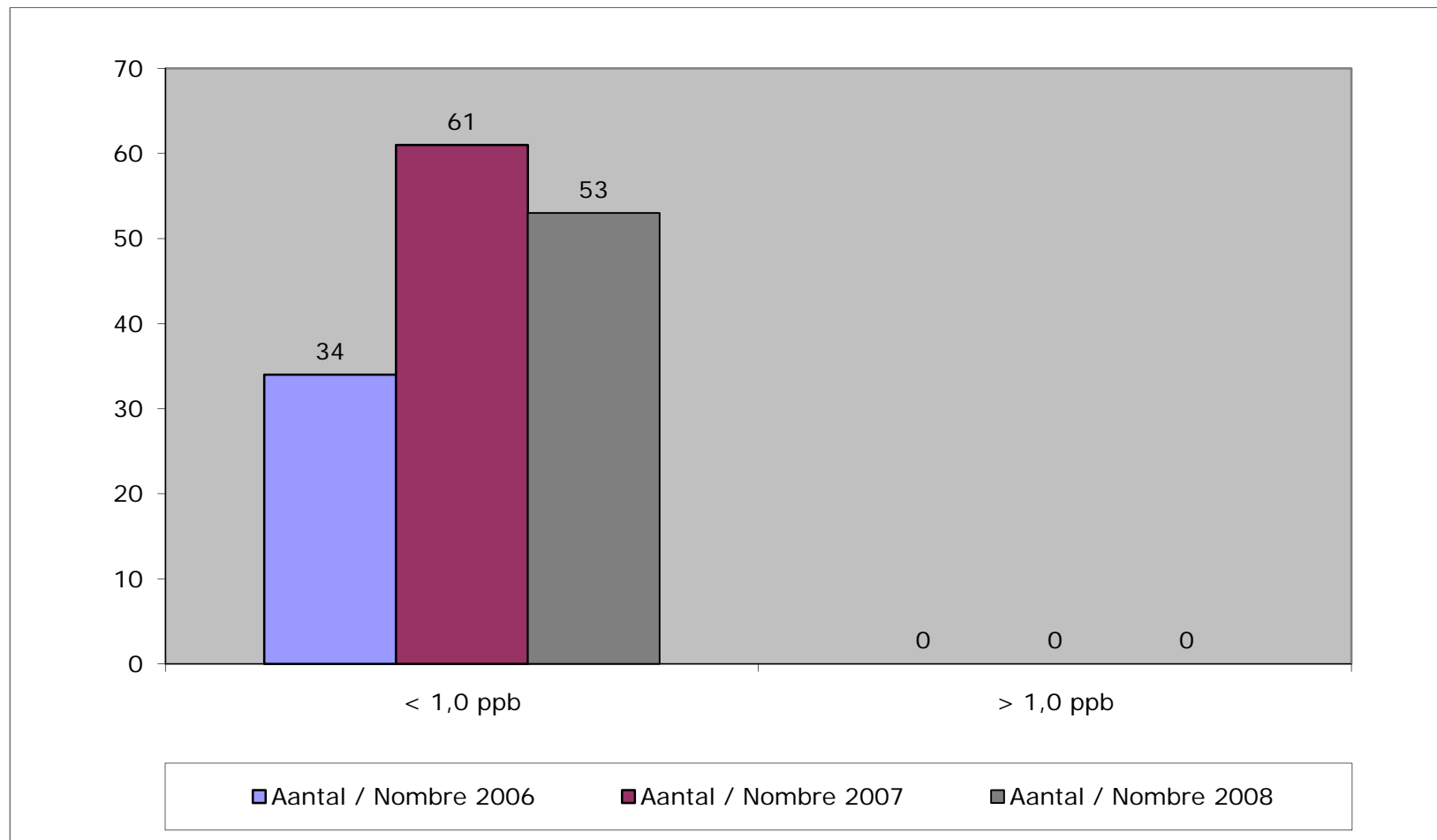
## TARWE – FROMENT: DON



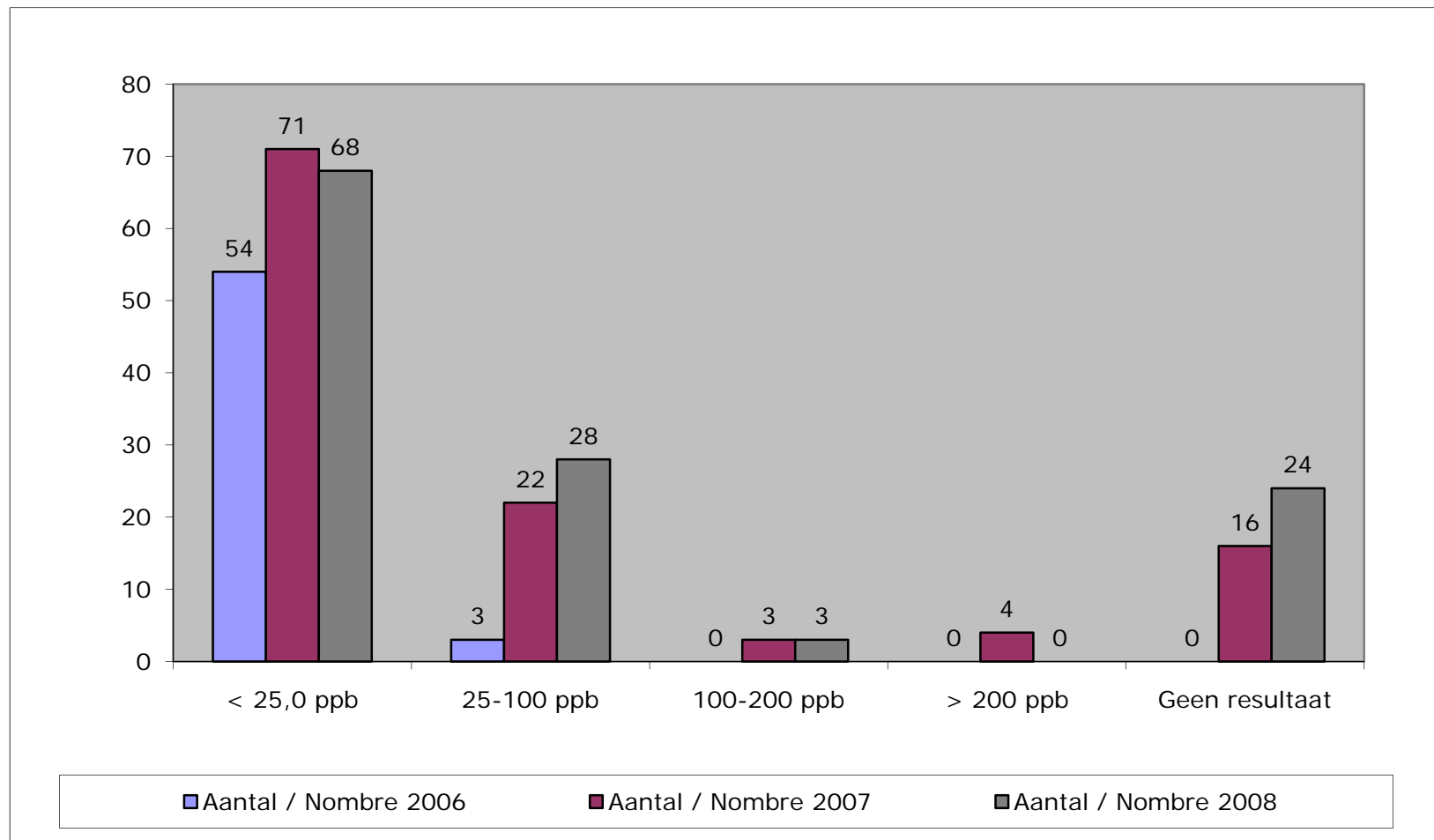
## TARWE – FROMENT : FUM B1 & B2



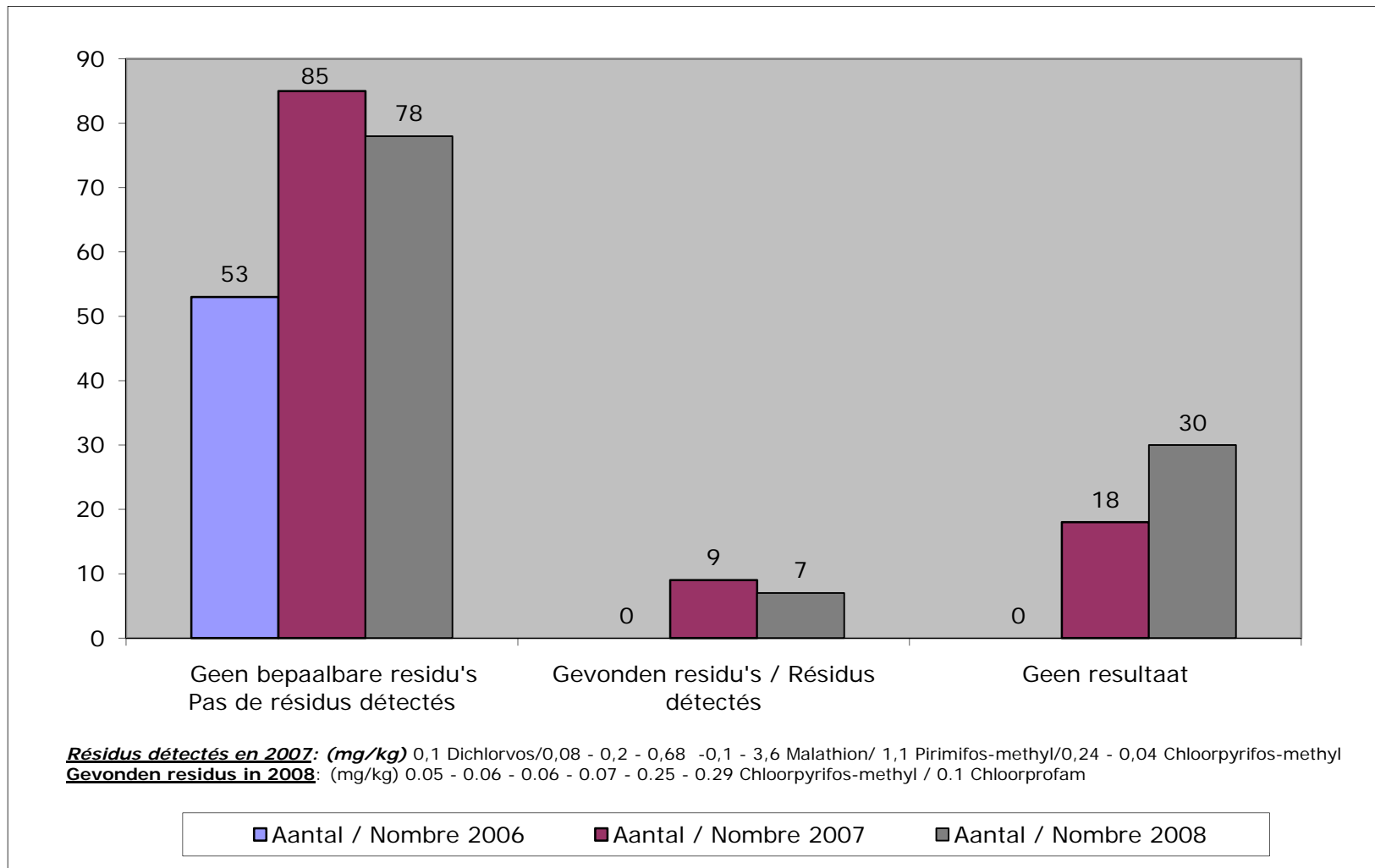
## TARWE – FROMENT : OTA



## TARWE – FROMENT : ZEA



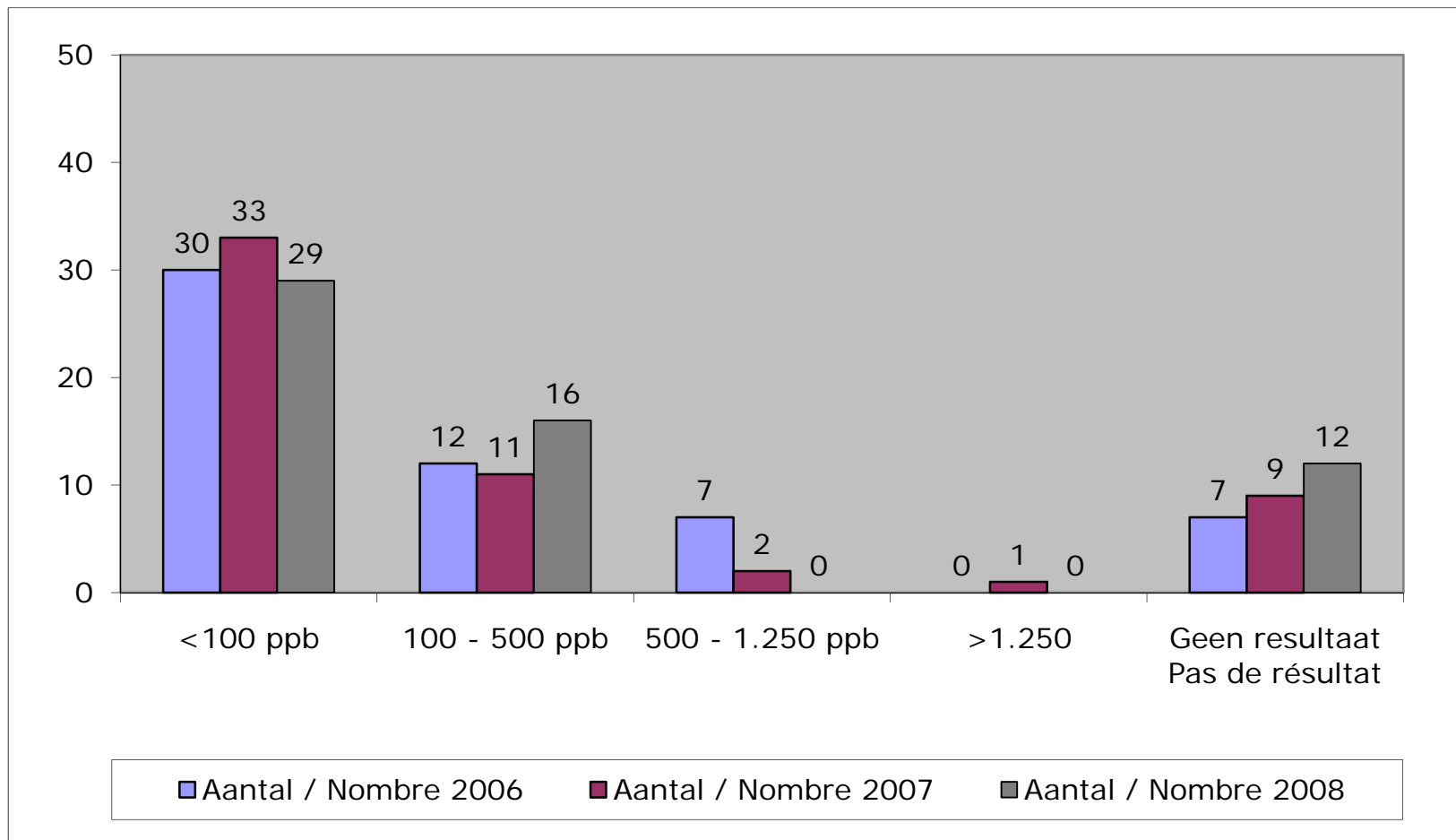
## TARWE – FROMENT : RES. PESTICIDES



SYNAGRA

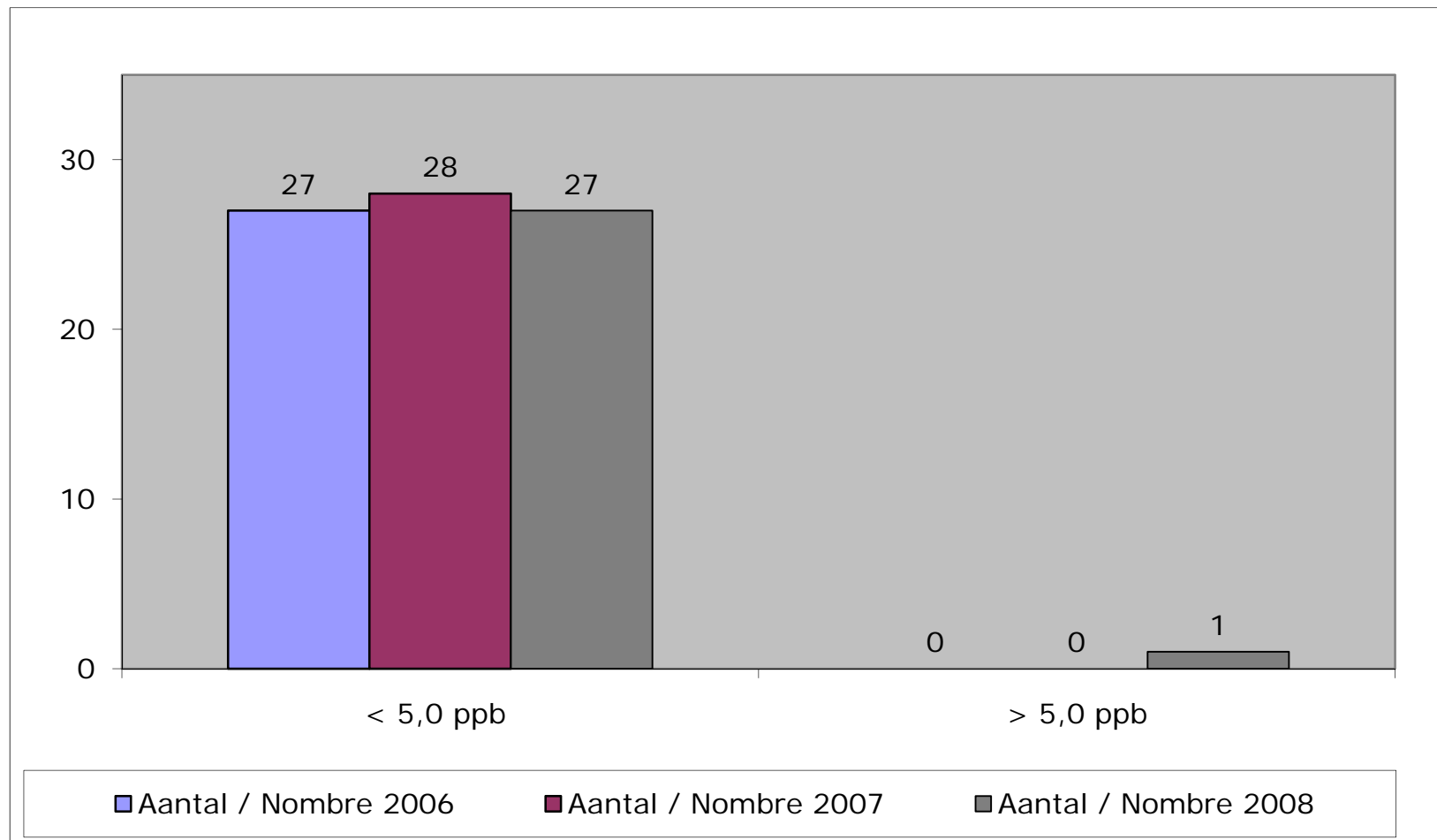


## GERST – ESCOURGEON : DON

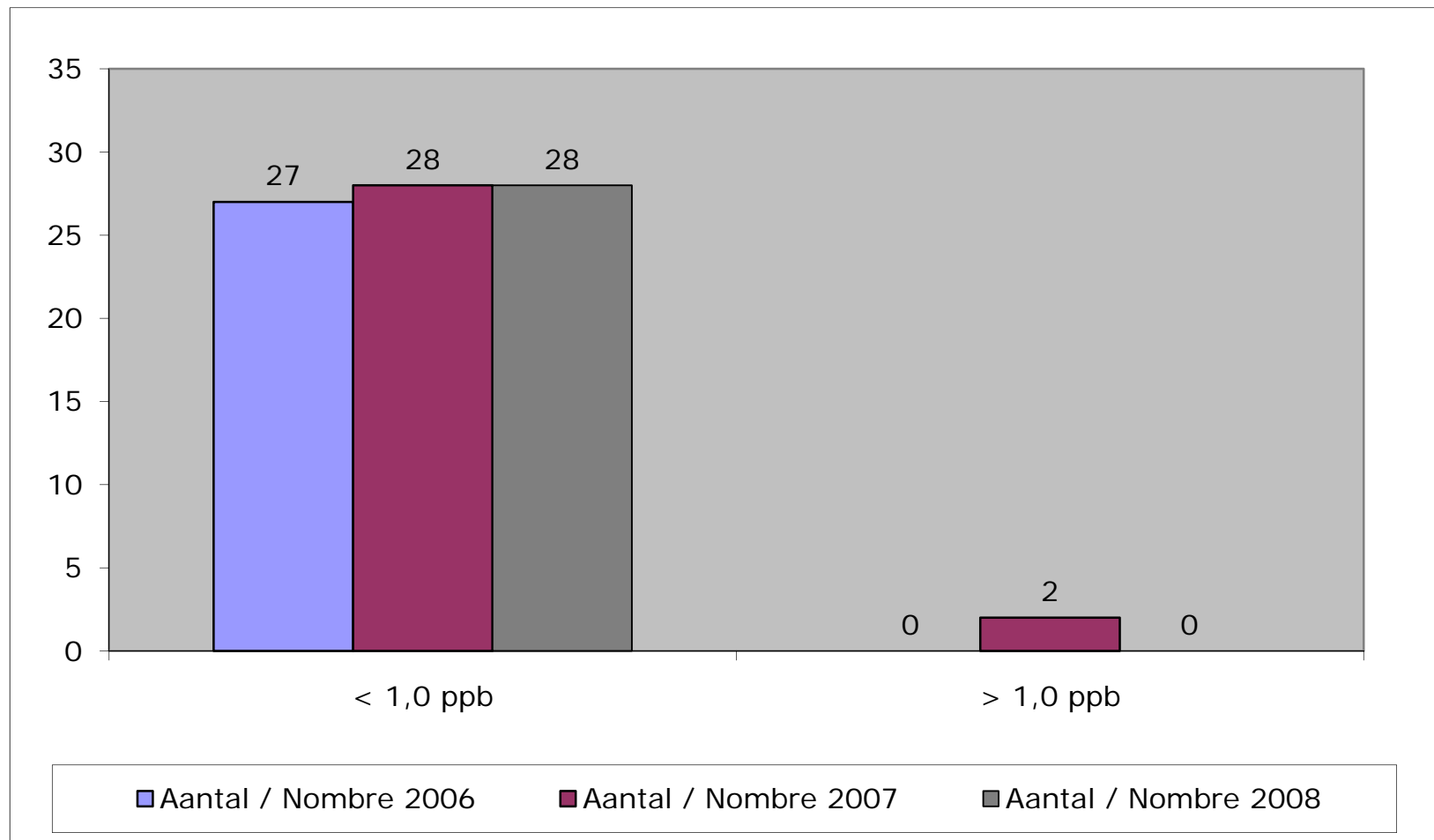


SYNAGRA

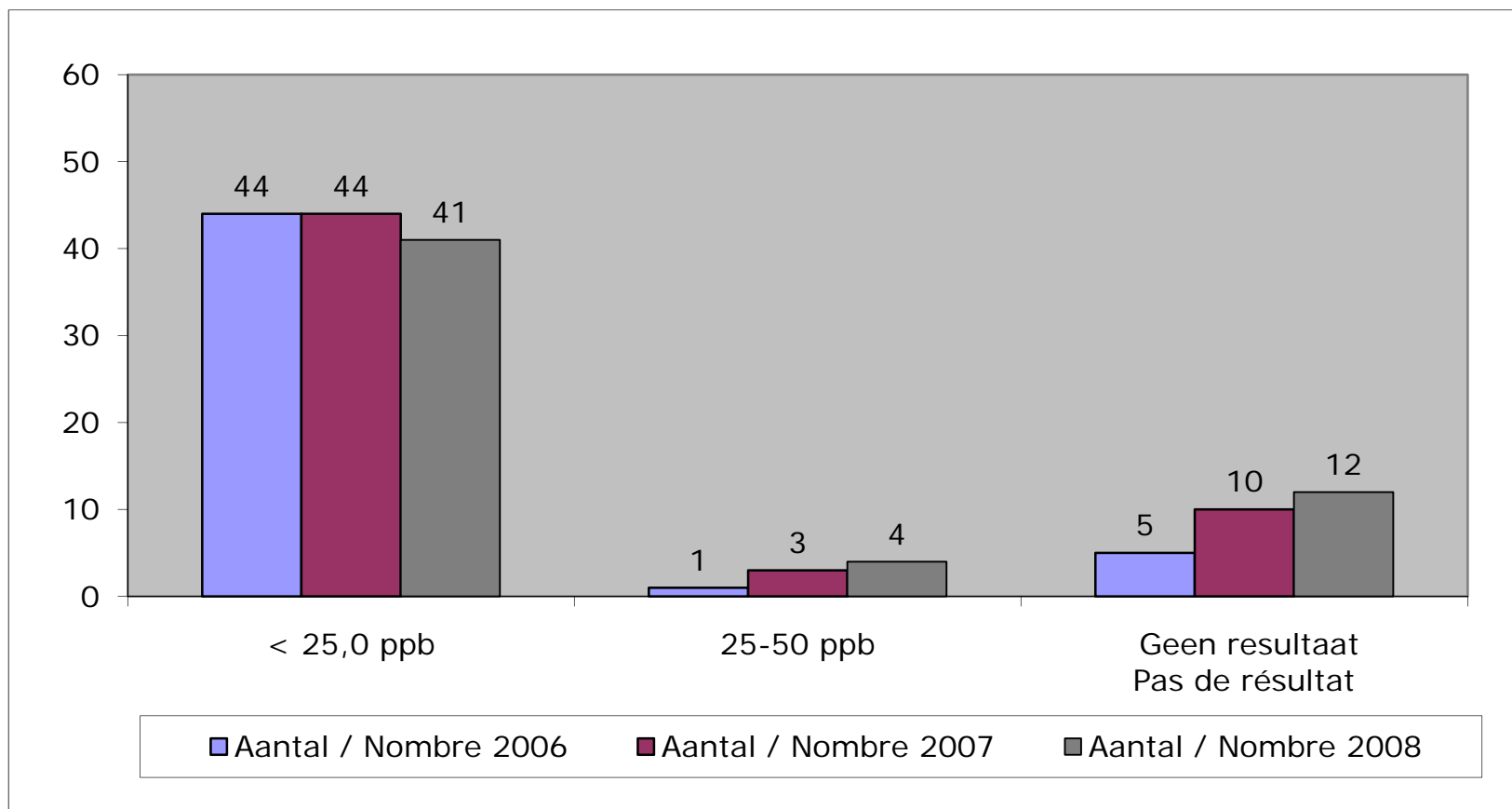
## GERST – ESCOURGEON : FUM B1 & B2



## GERST – ESCOURGEON : OTA

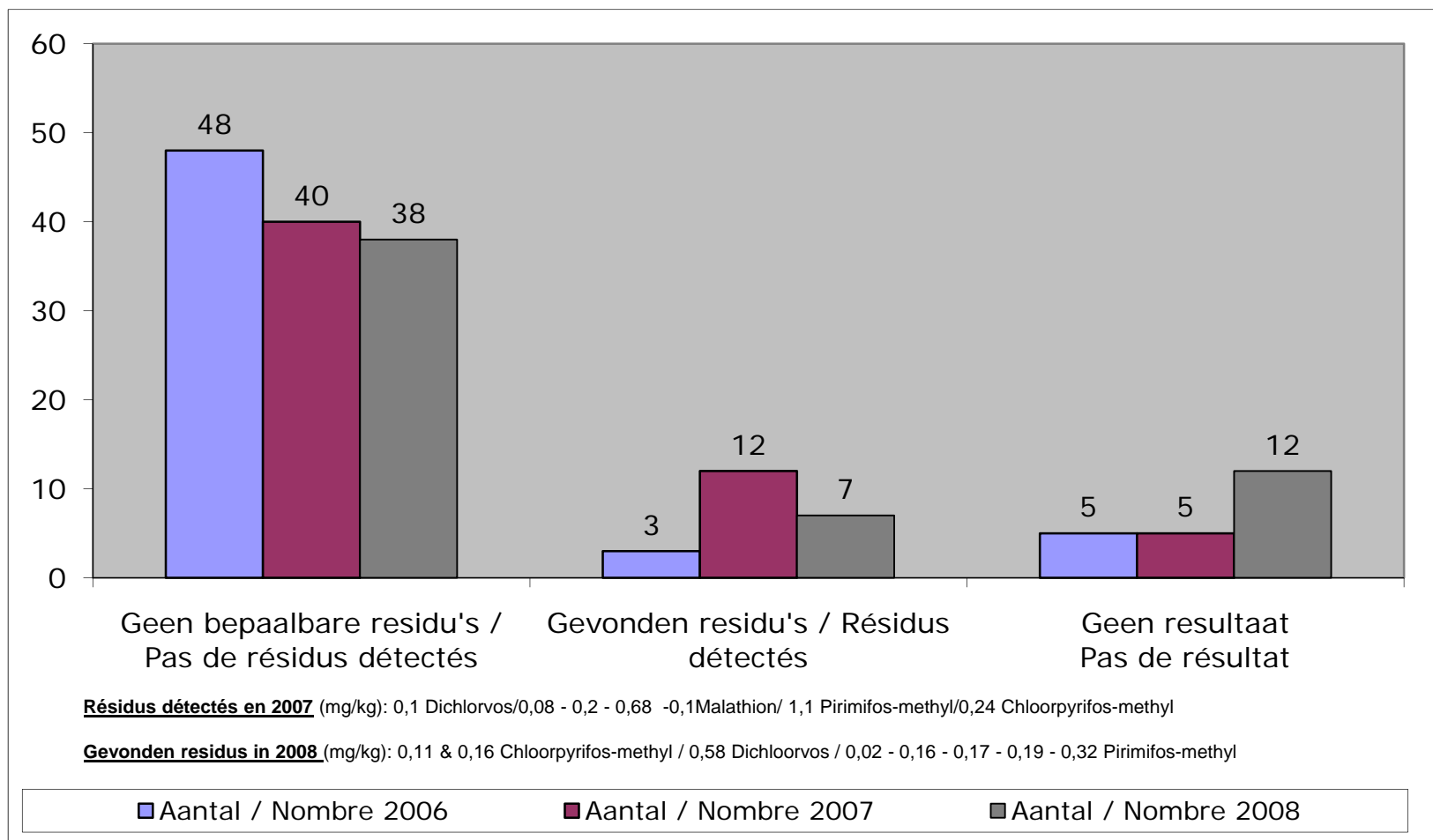


## GERST – ESCOURGEON : ZEA

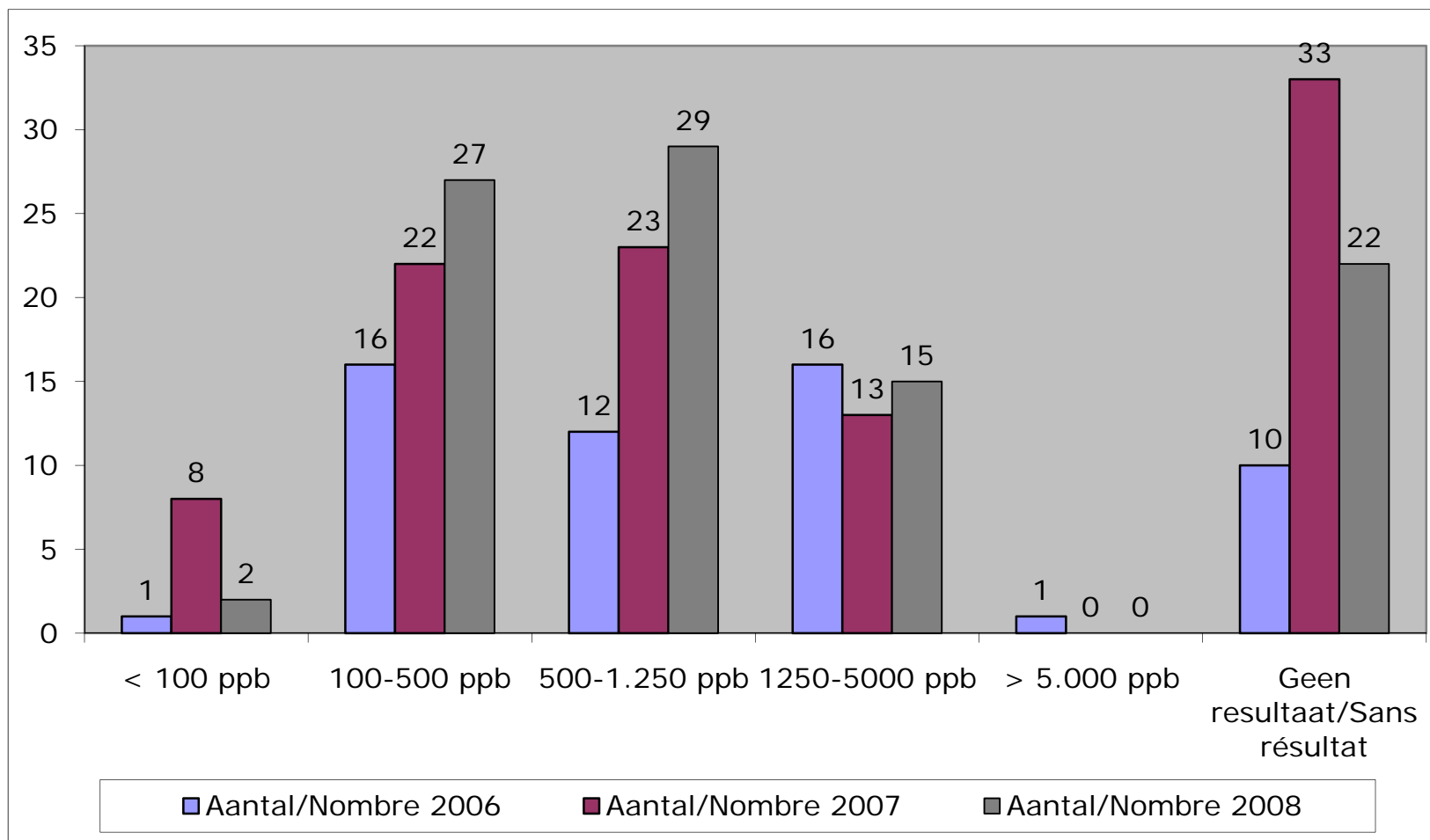


SYNAGRA

## GERST – ESCOURGEON : RESIDUS PESTICIDES

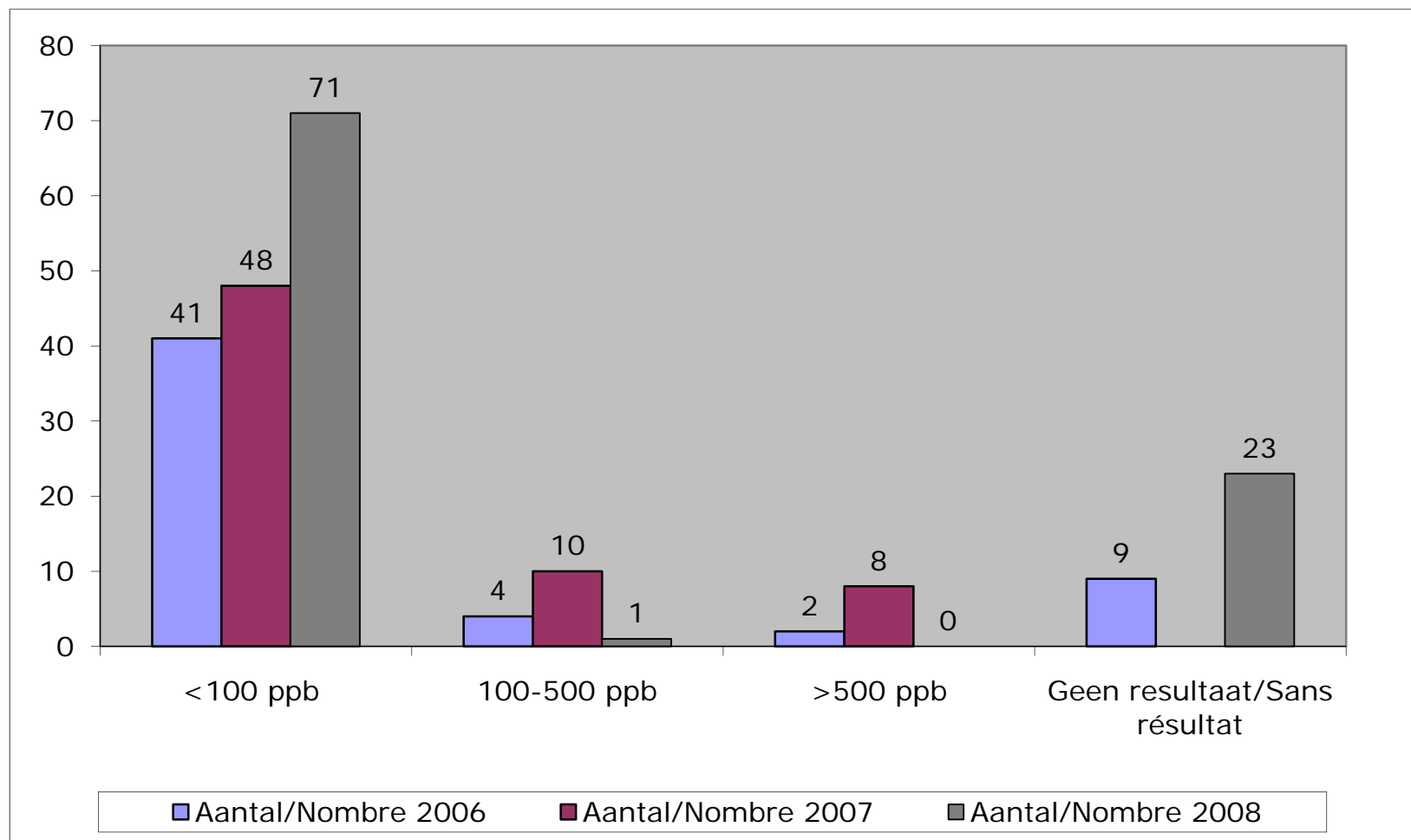


## MAIS : DON



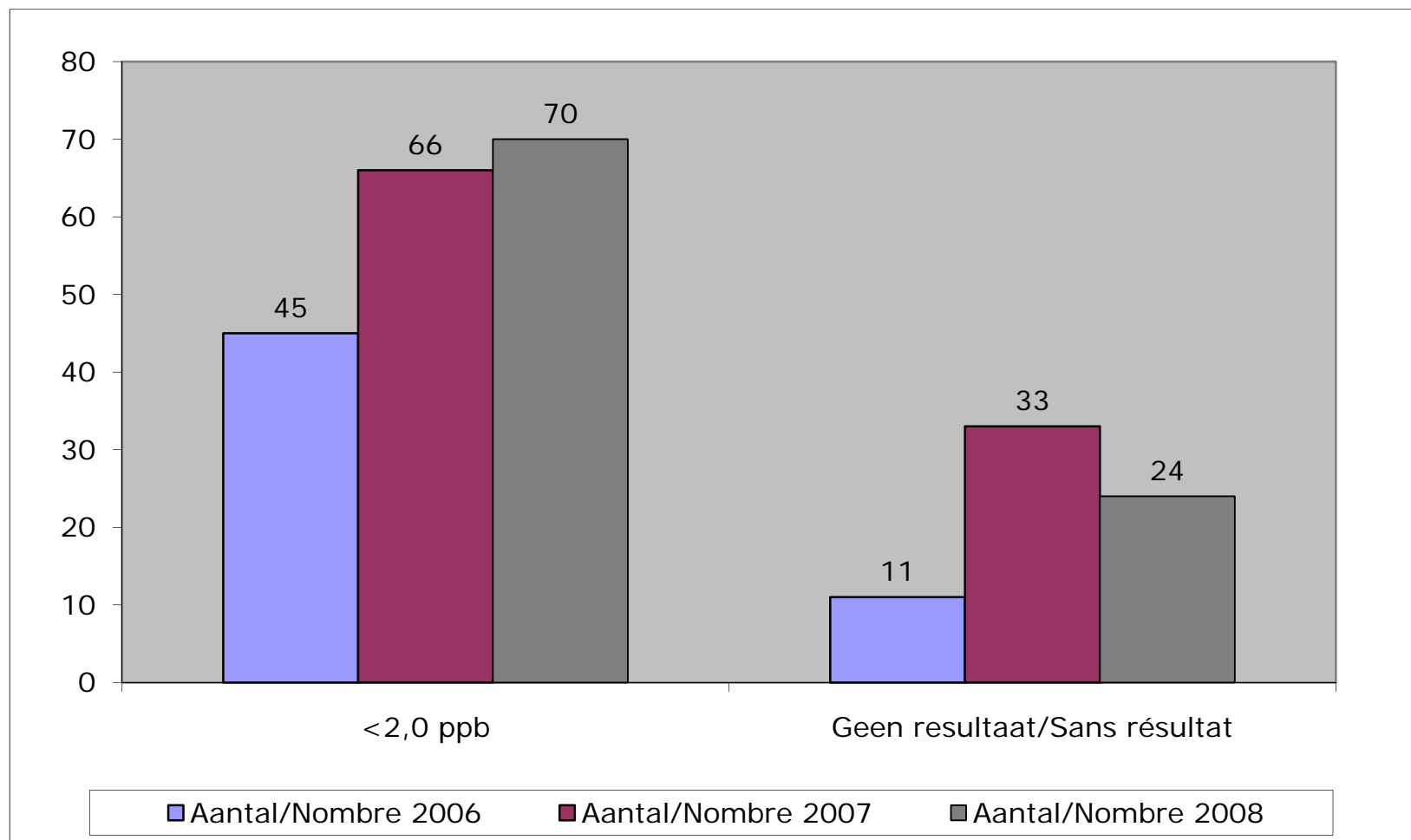
SYNAGRA

## MAIS : FUM B1 & B2



SYNAGRA

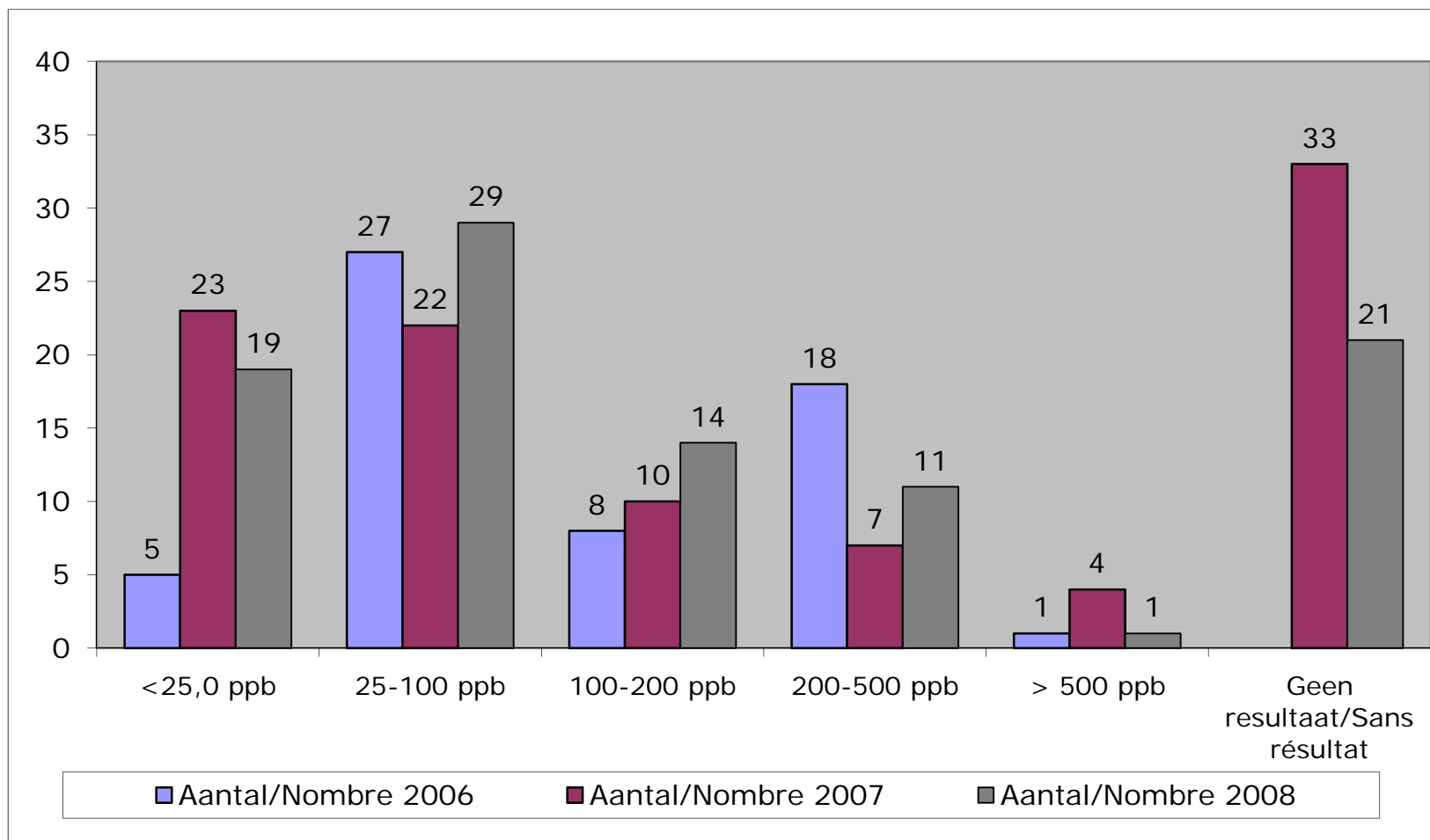
## MAIS : OTA



SYNAGRA

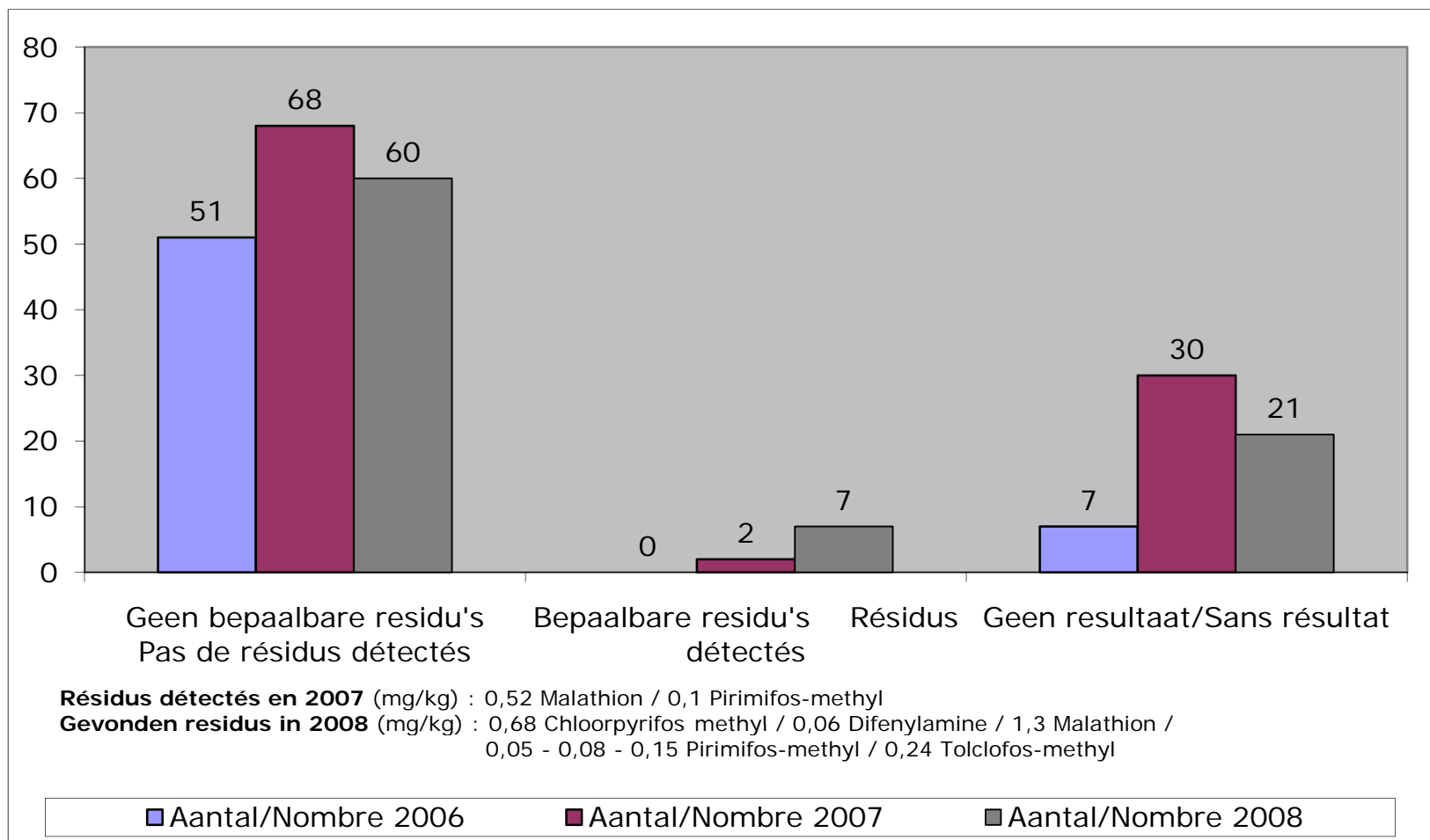


# MAIS : ZEA



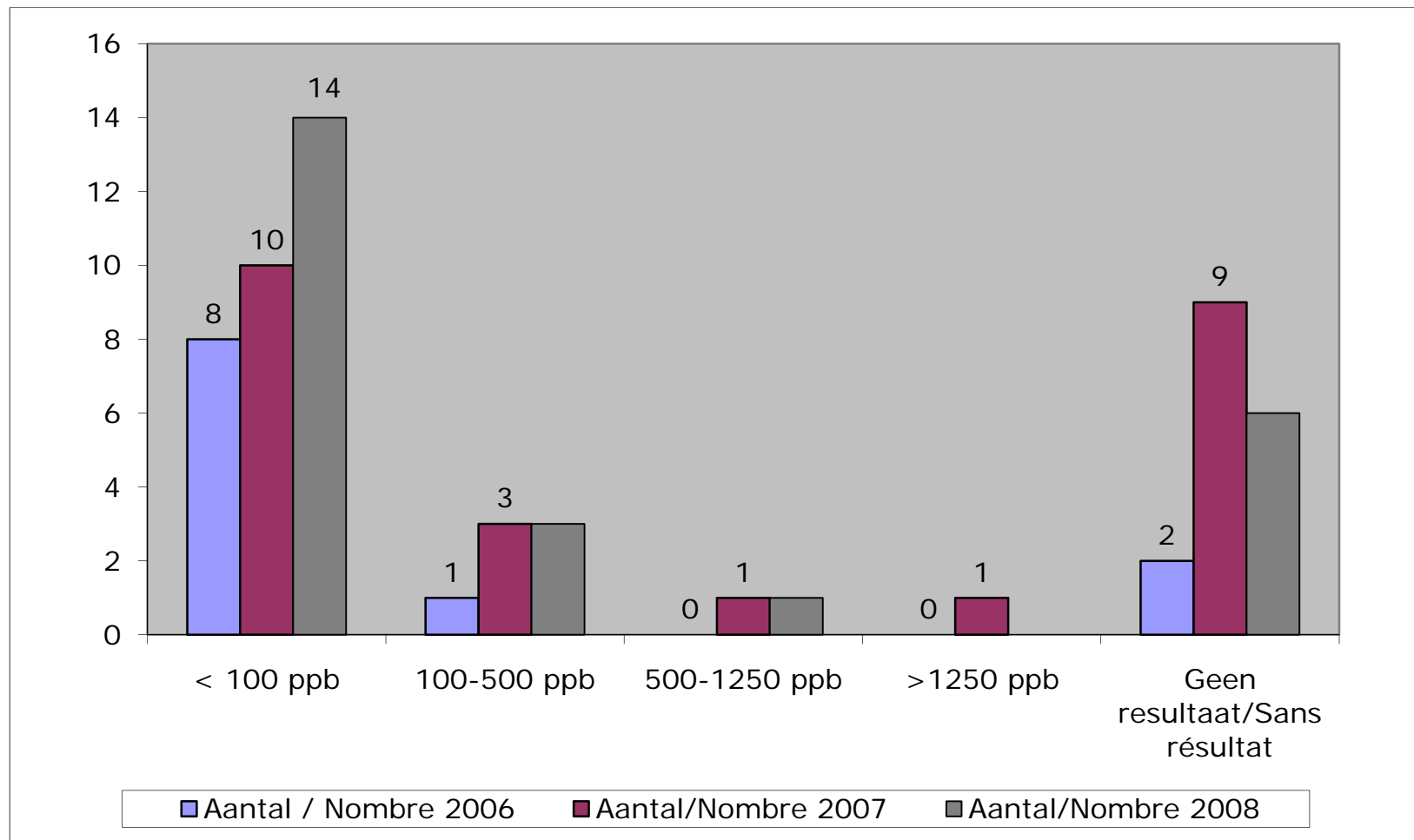
SYNAGRA

## MAIS : RESIDUS PESTICIDES



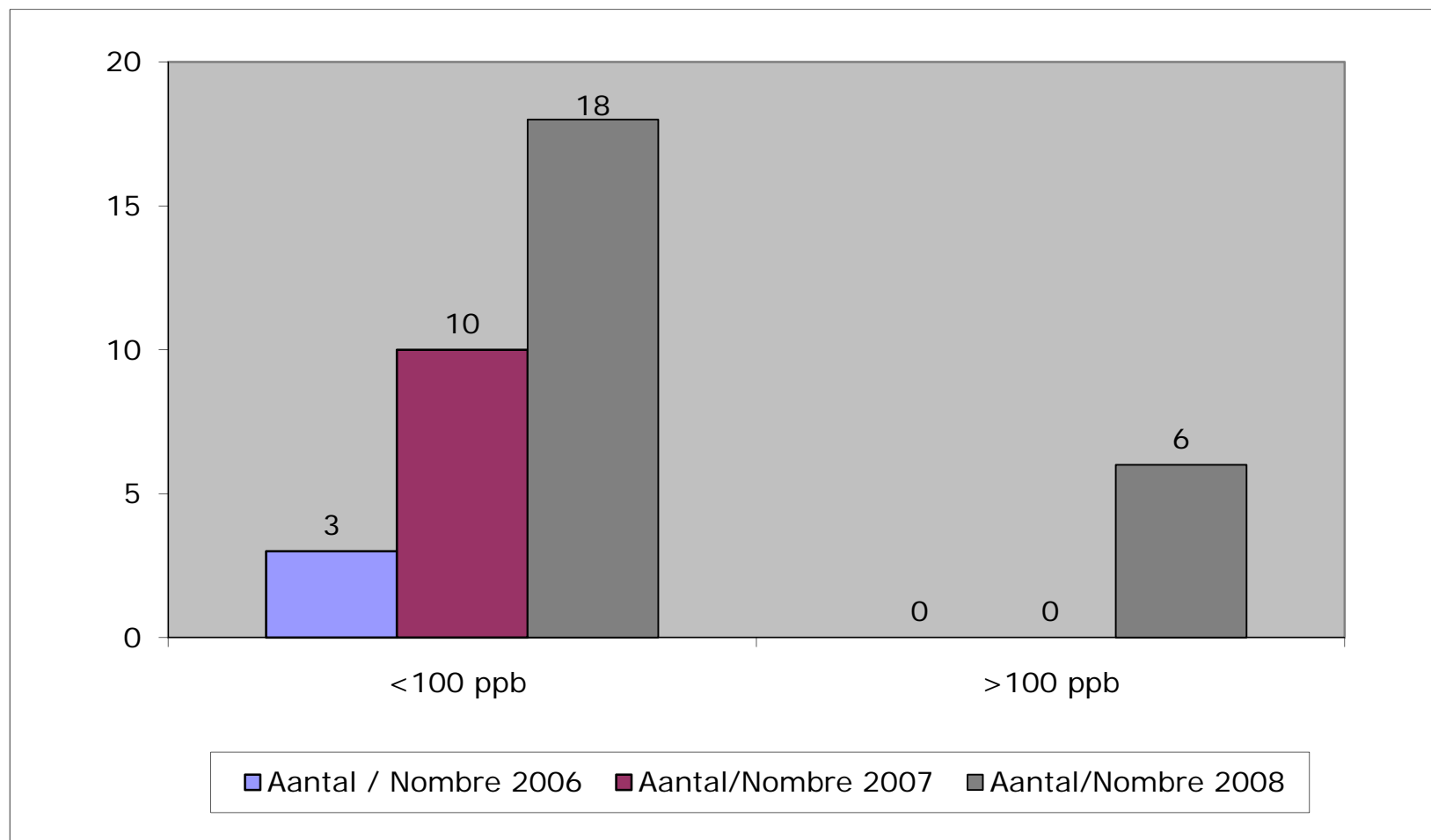
SYNAGRA

## HAVER – AVOINE : DON

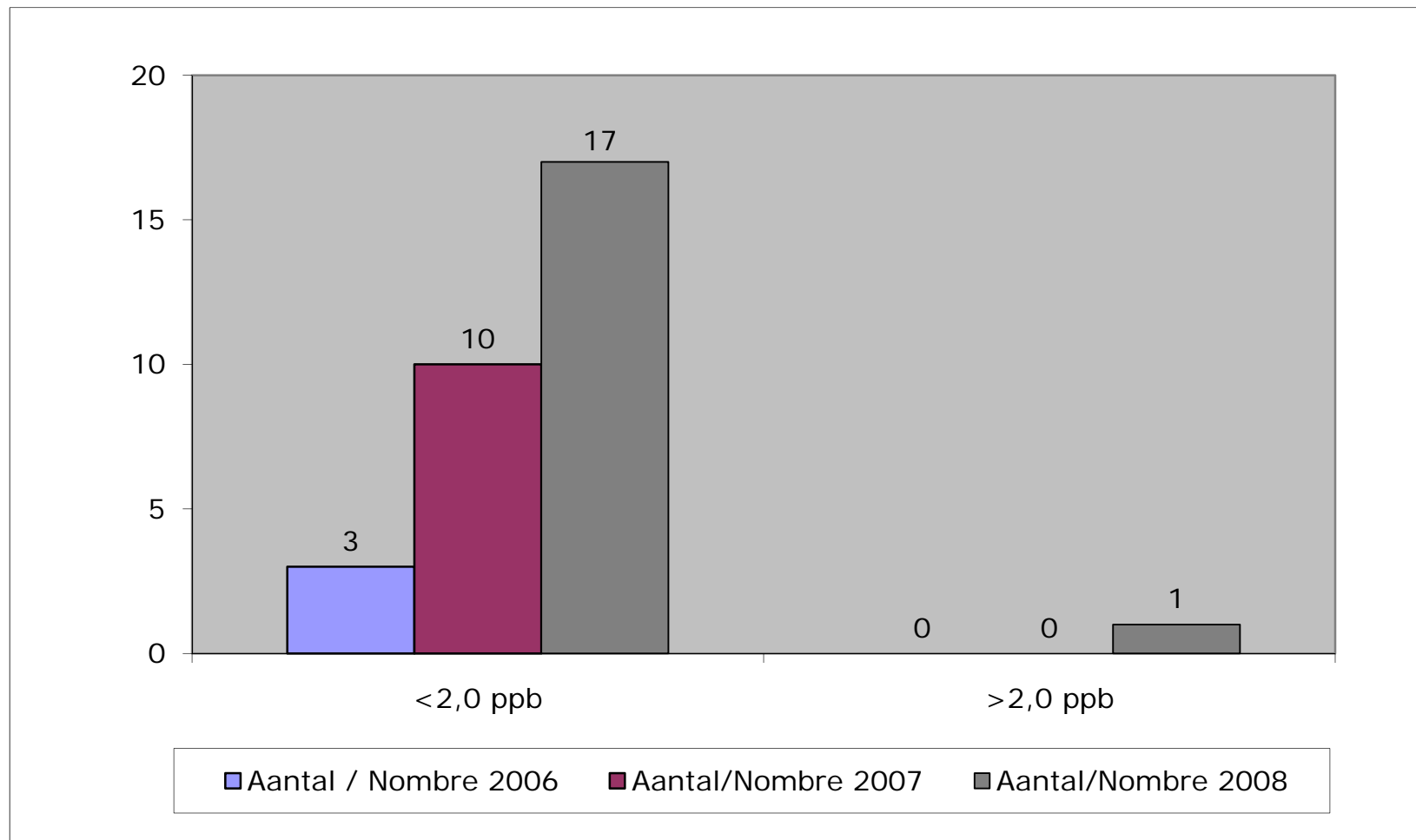


SYNAGRA

## HAYER – AVOINE : FUM B1 & B2

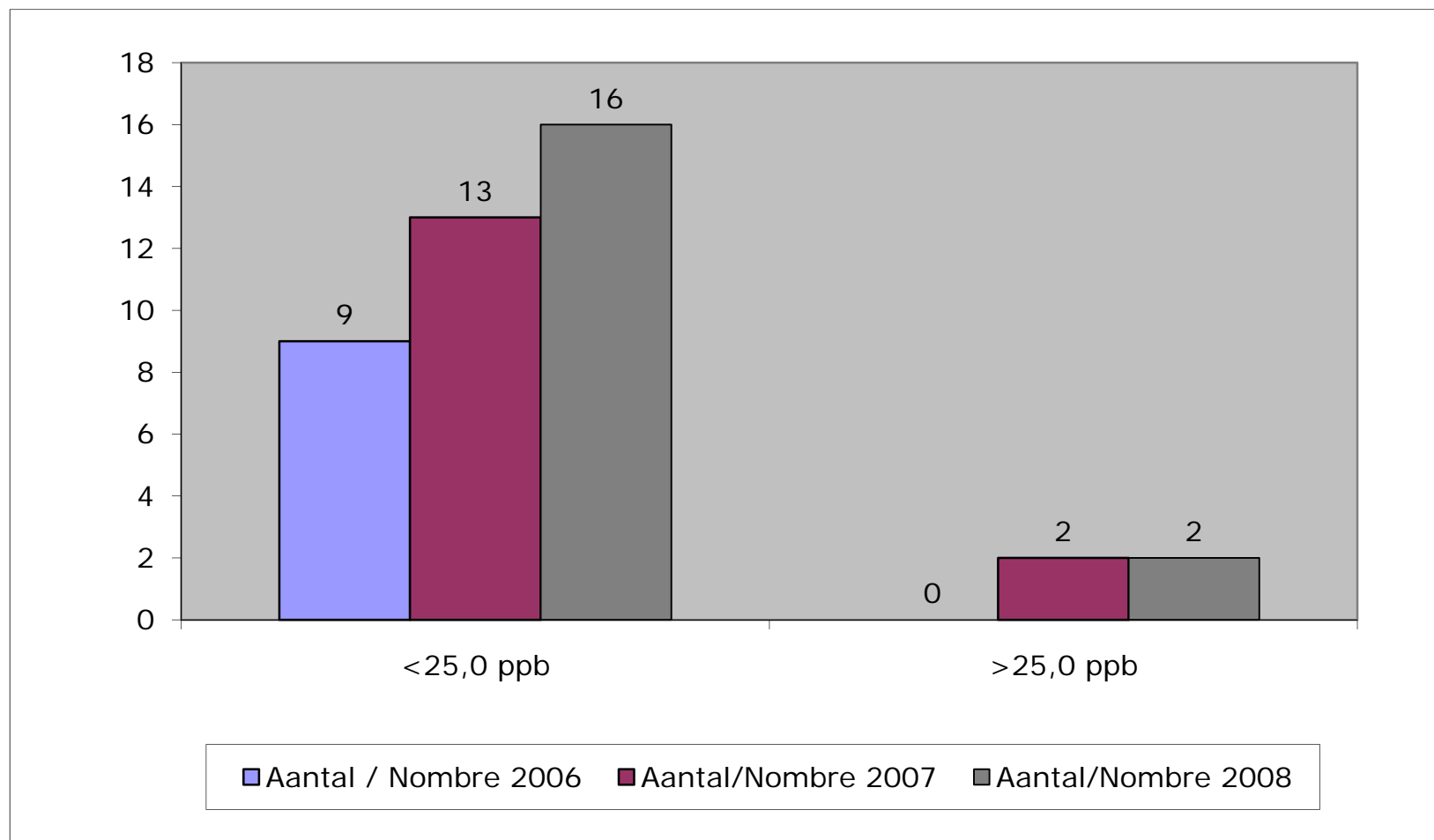


## HAVER – AVOINE : OTA

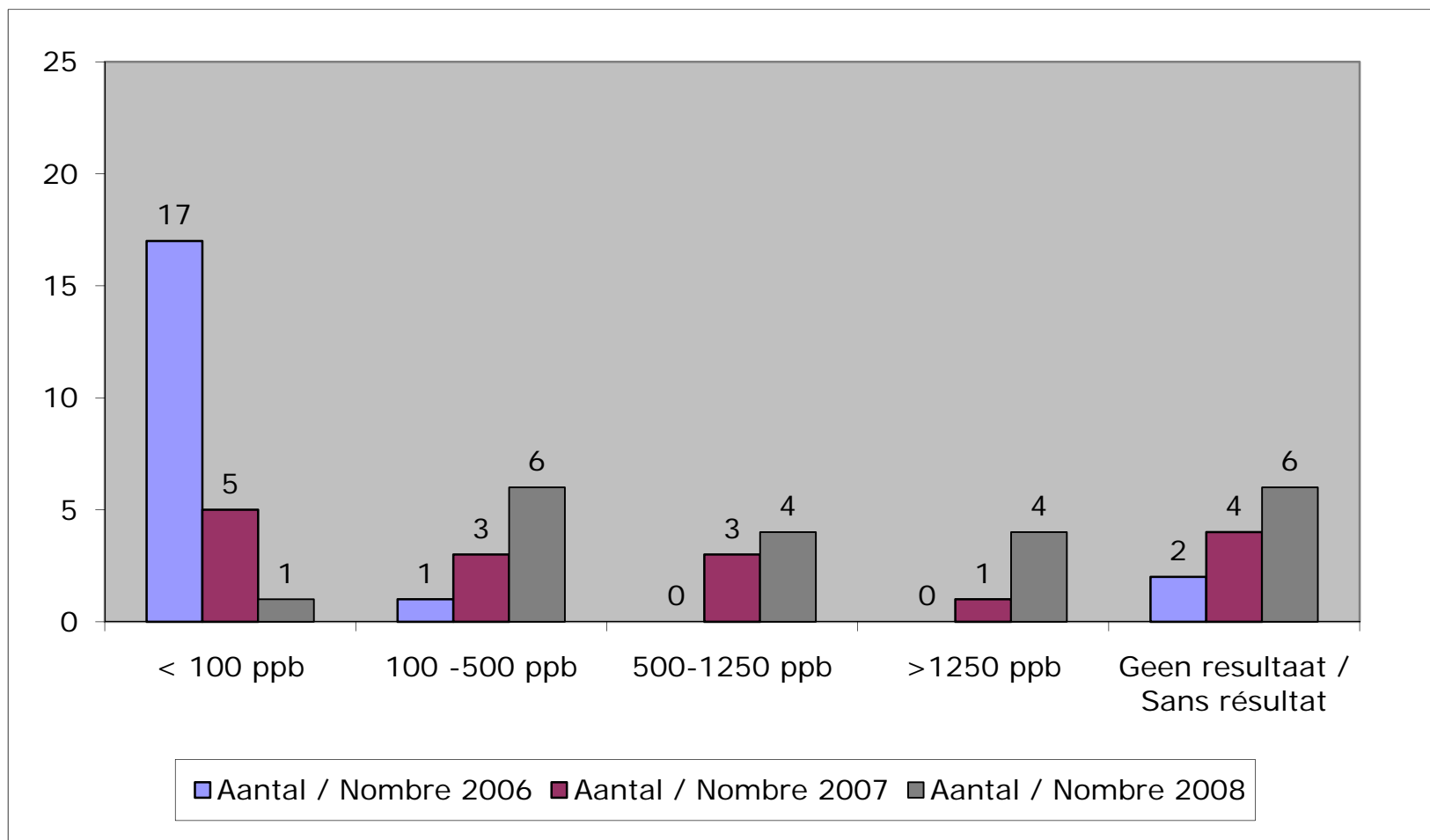


SYNAGRA

## HAVER – AVOINE : ZEA

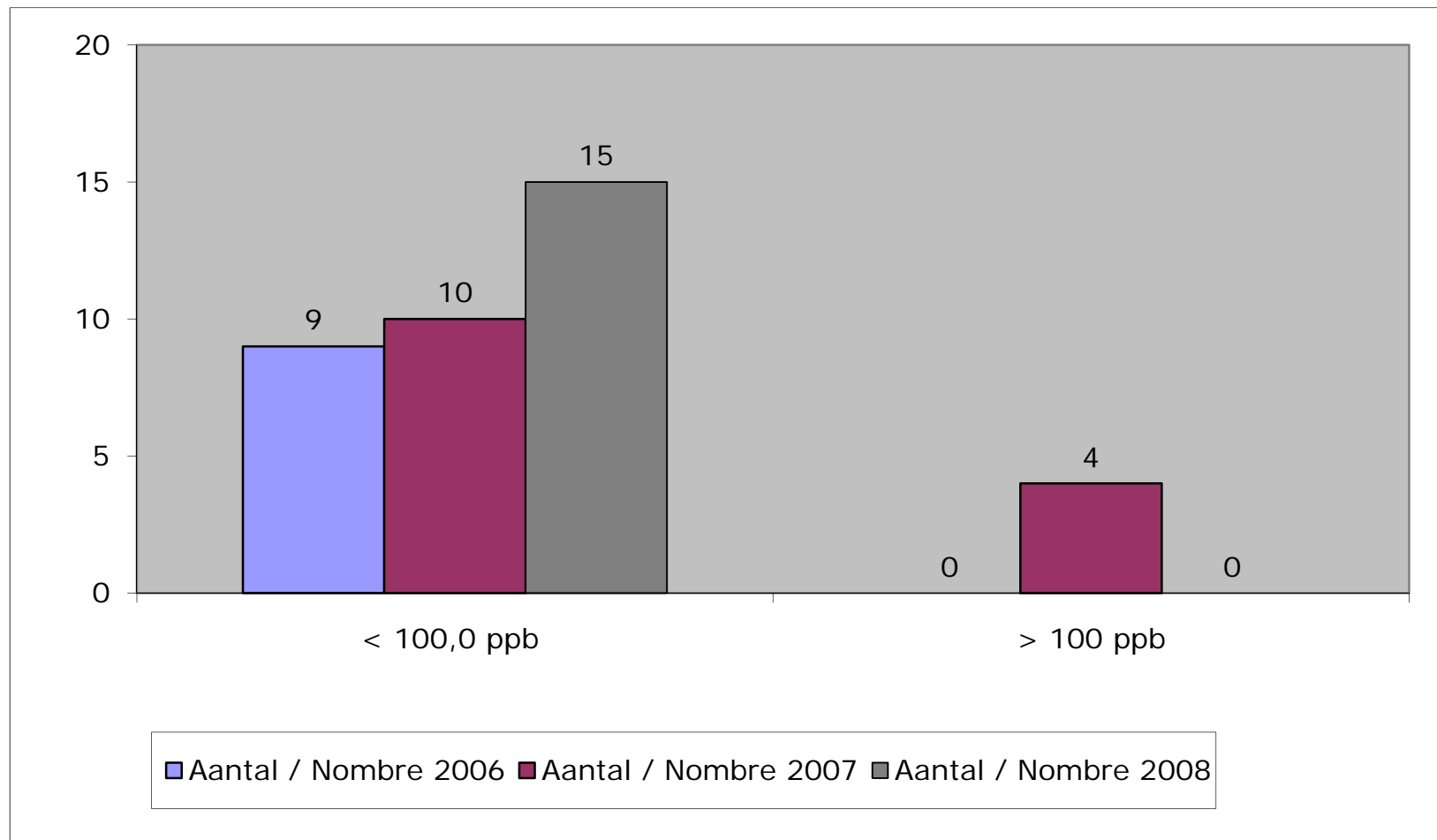


## SPELT – EPEAUTRE : DON



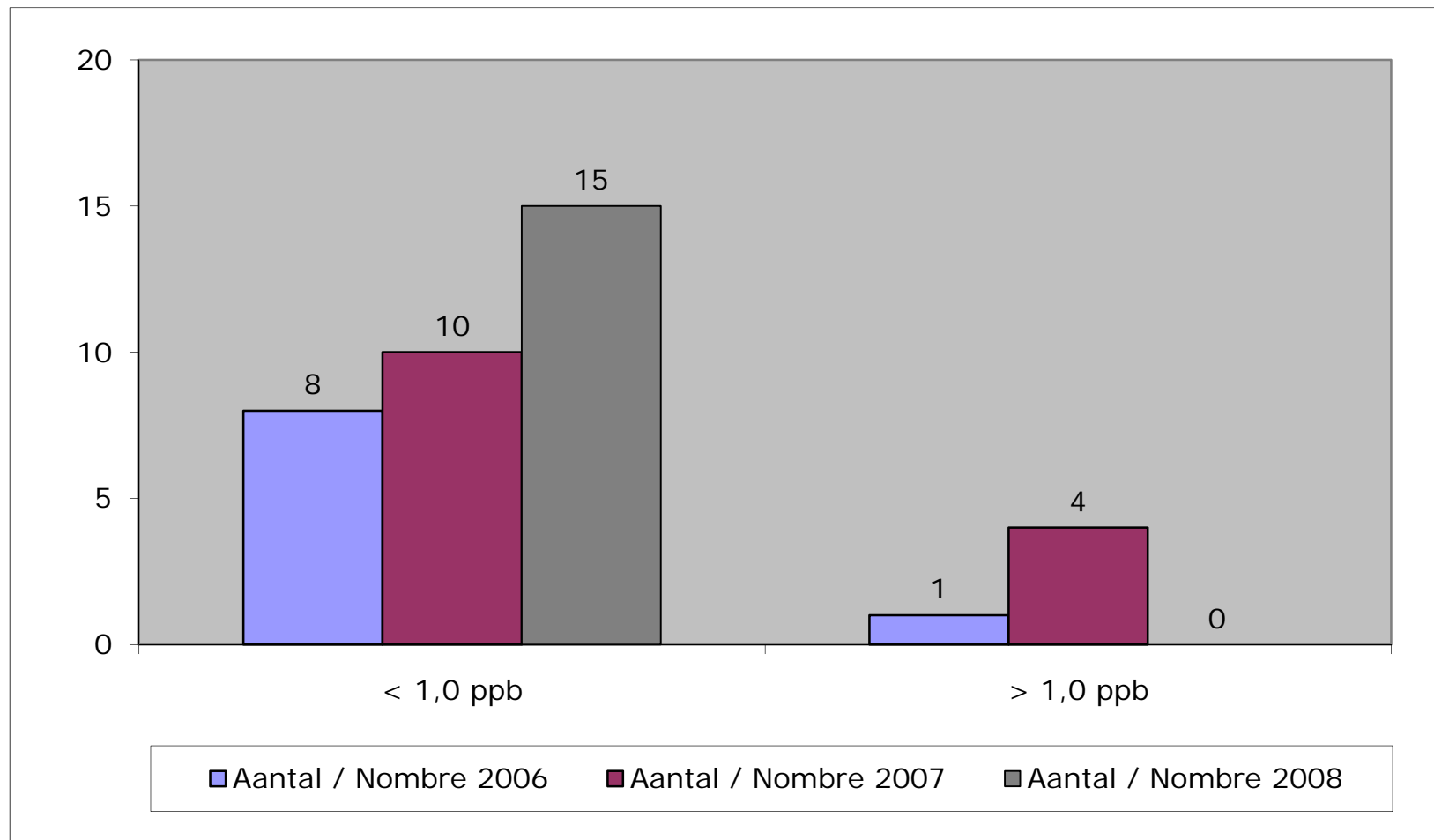
SYNAGRA

## SPELT – EPEAUTRE : FUM B1 & B2



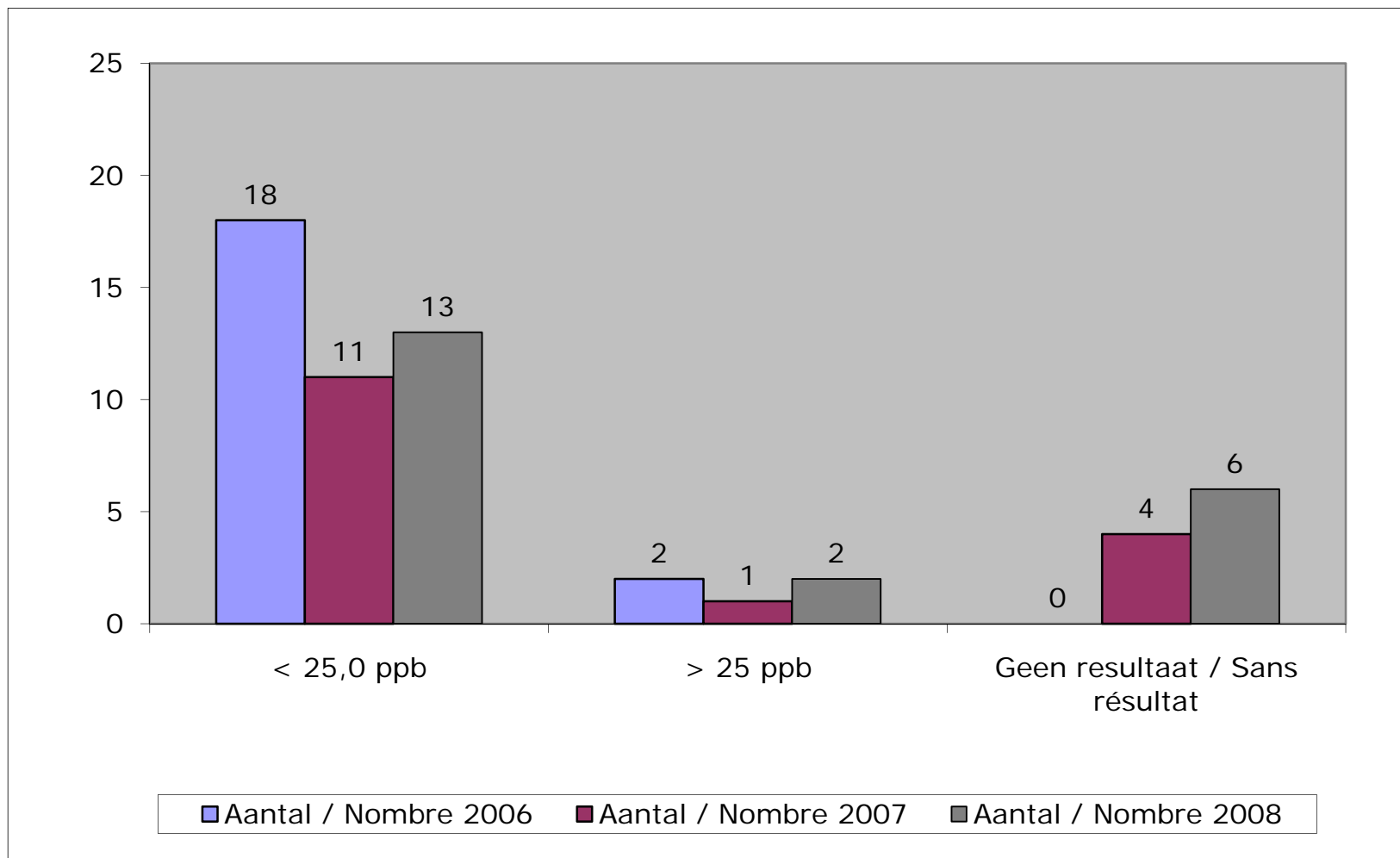


## SPELT – EPEAUTRE : OTA



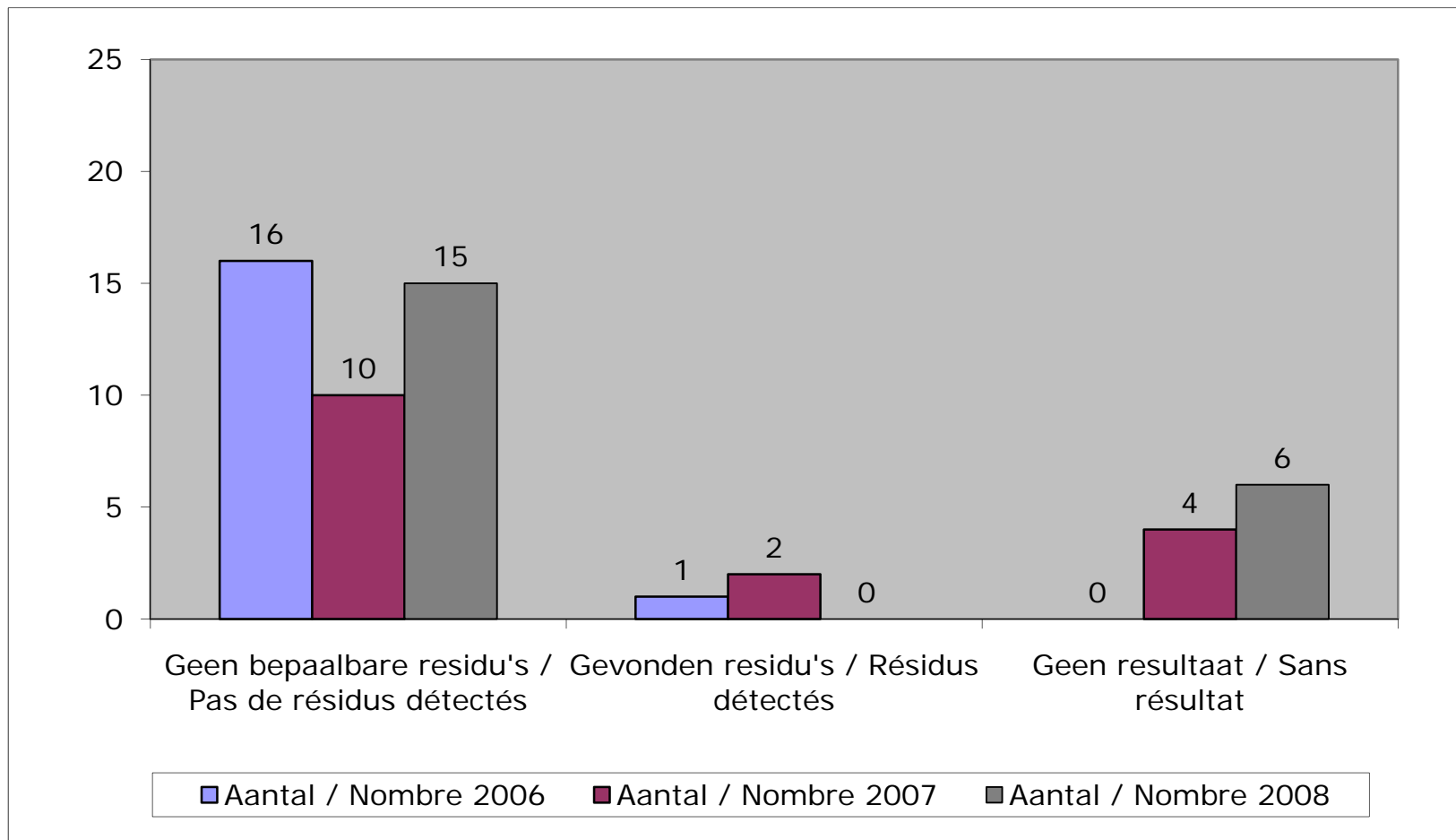
SYNAGRA

## SPELT – EPEAUTRE : ZEA



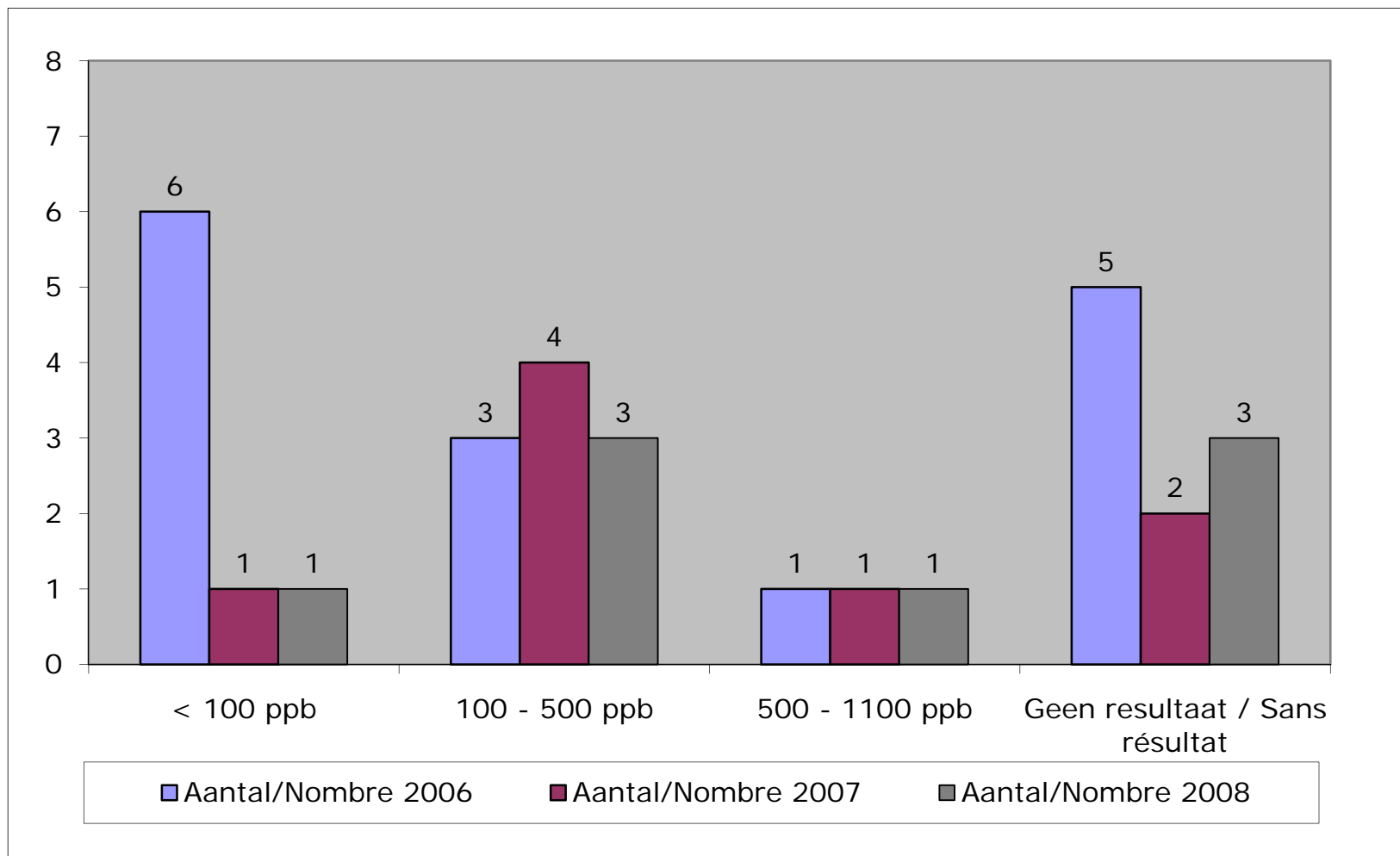
SYNAGRA

## SPELT – EPEAUTRE : RESIDUS PESTICIDES



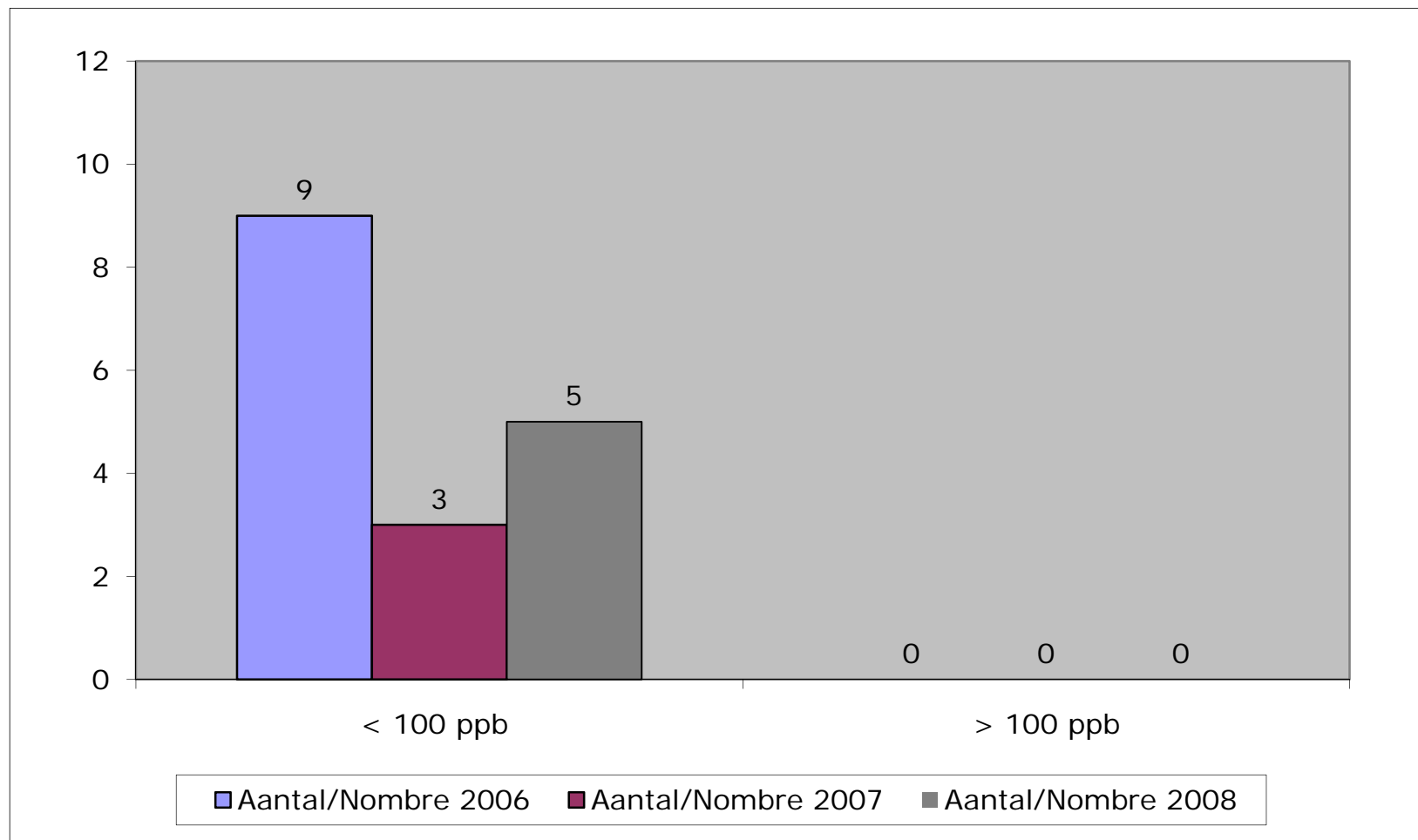
SYNAGRA

## TRITICALE : DON



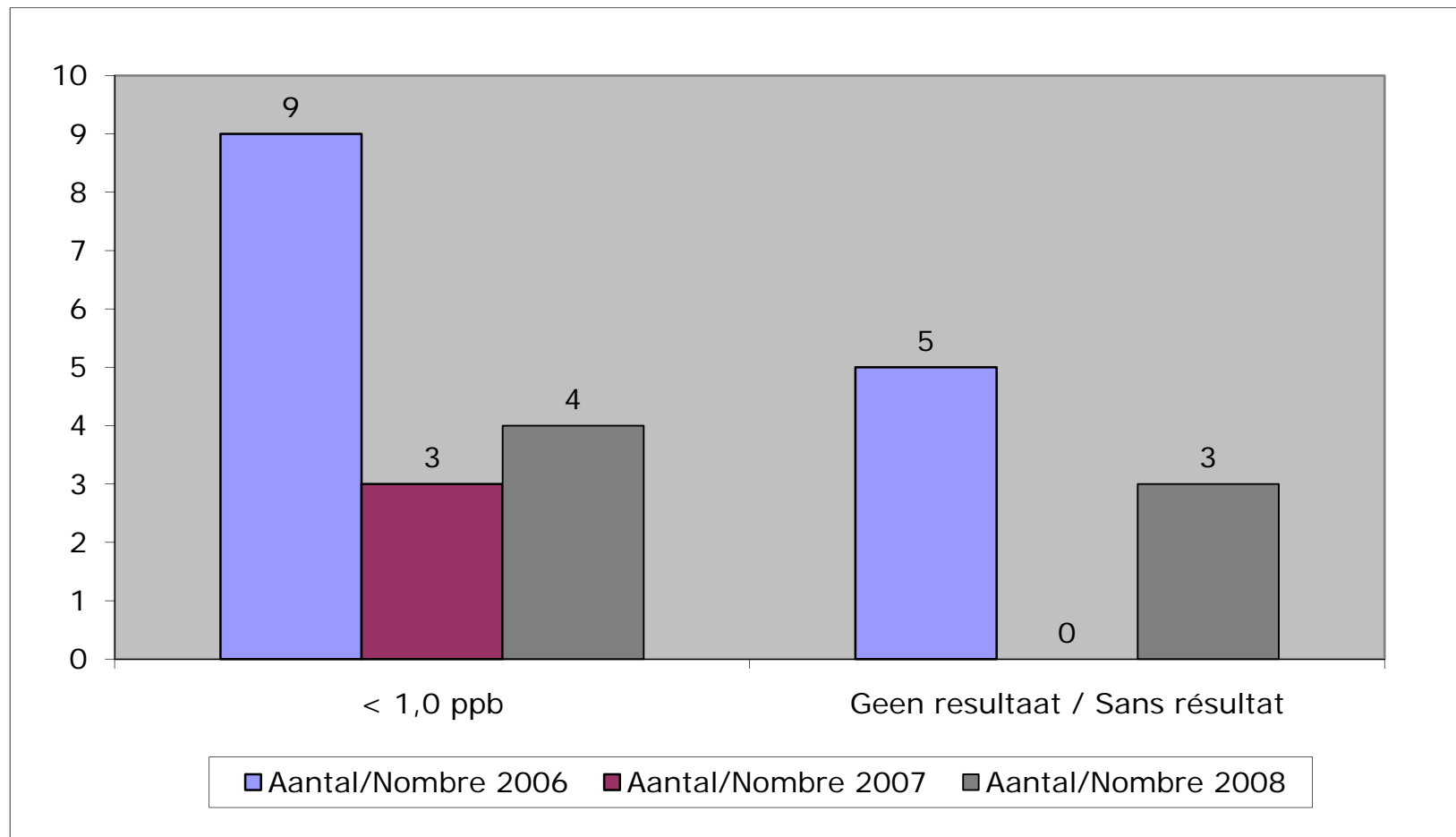
SYNAGRA

## TRITICALE : FUM B1 & B2



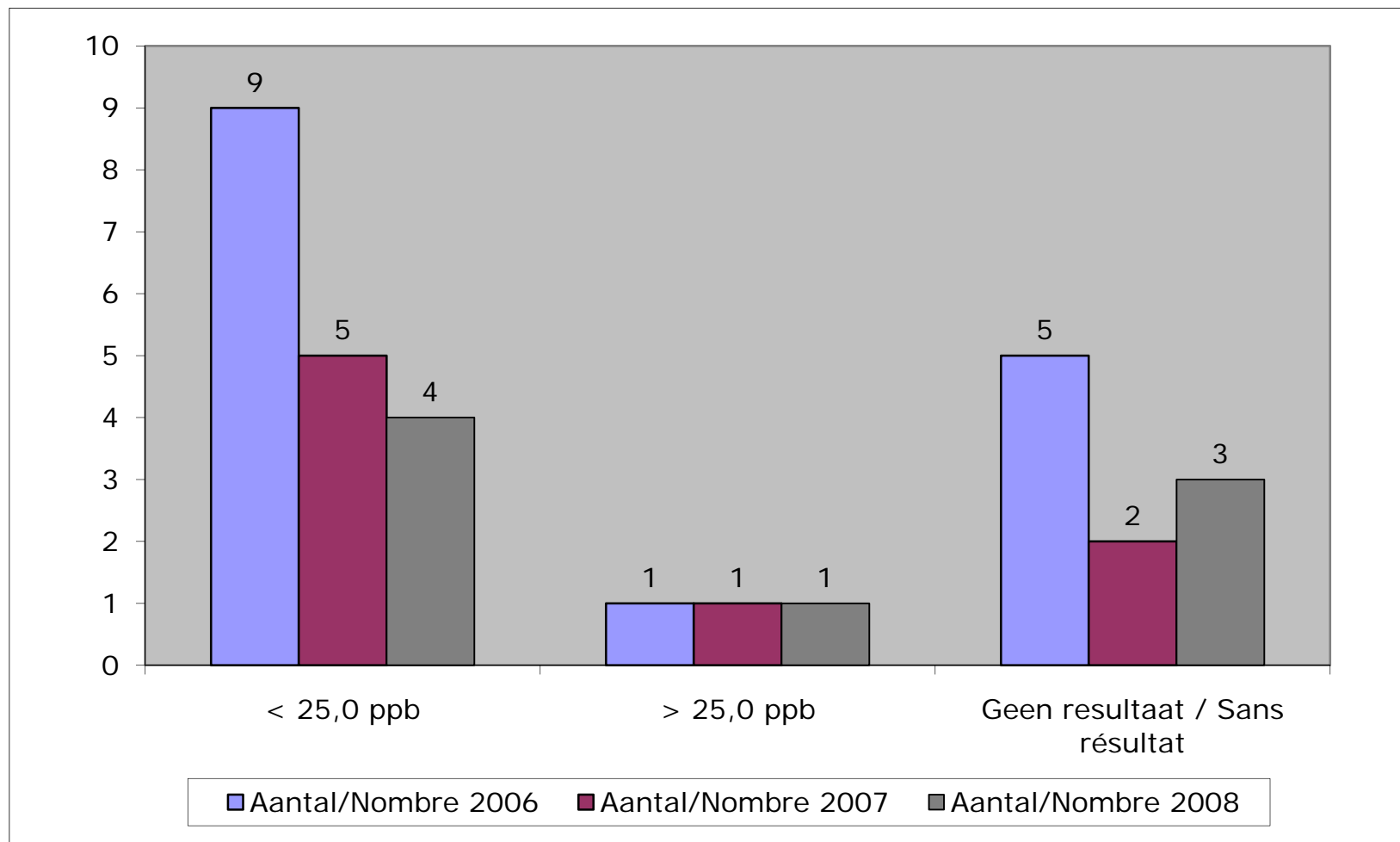
SYNAGRA

## TRITICALE : OTA



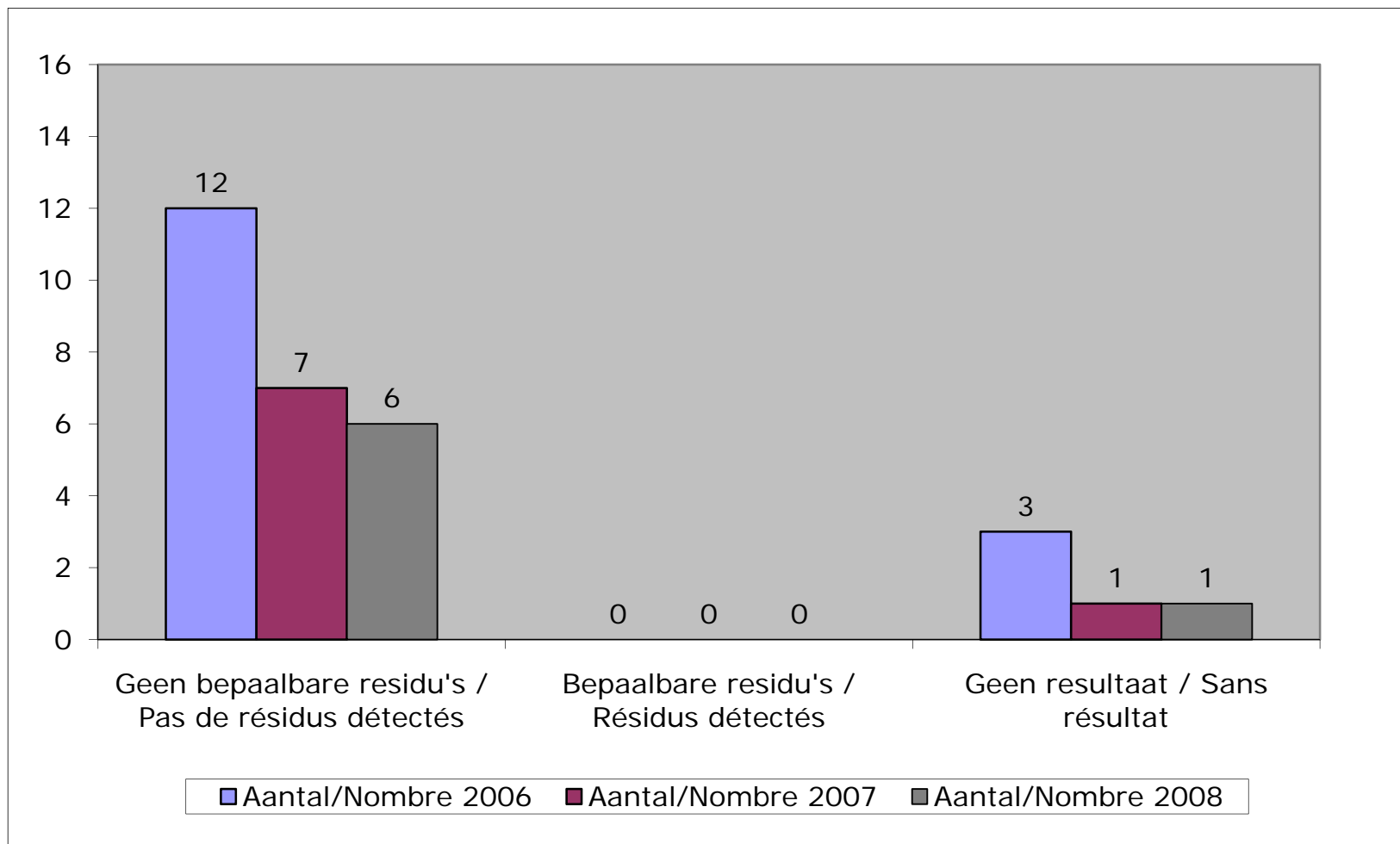
SYNAGRA

## TRITICALE : ZEA



SYNAGRA

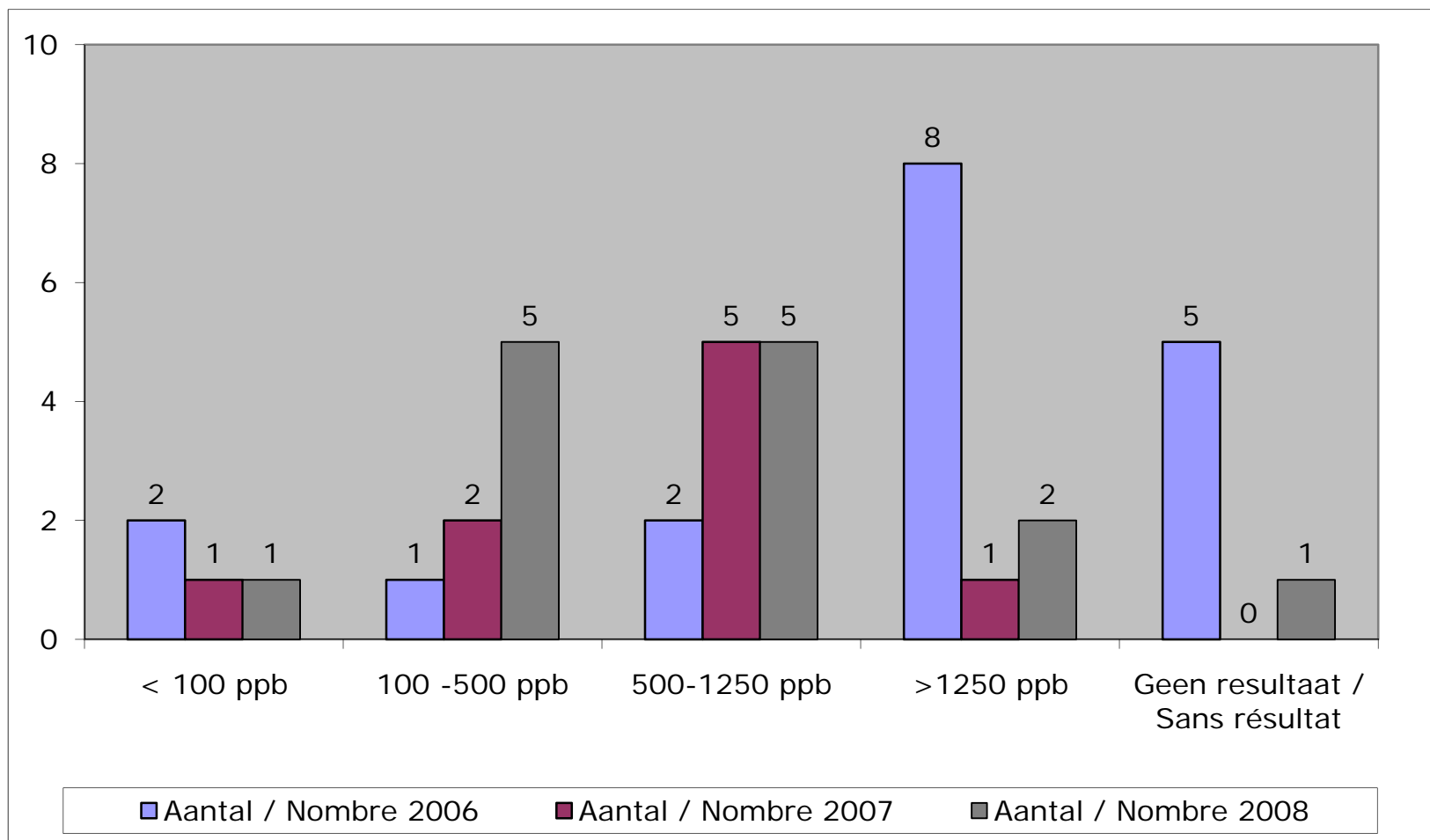
## TRITICALE : RESIDUS PESTICIDES



SYNAGRA

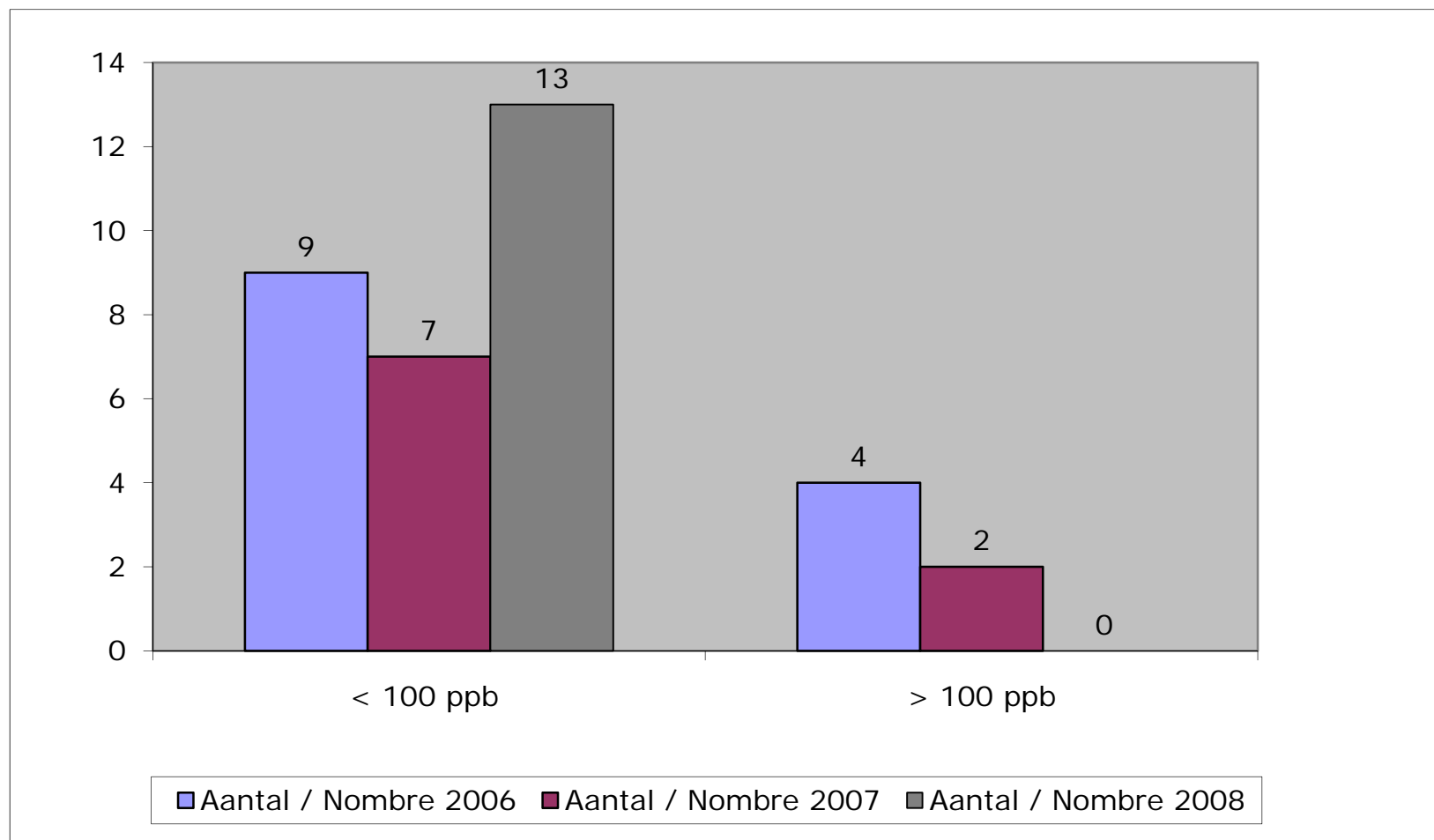


## MAIS CCM : DON



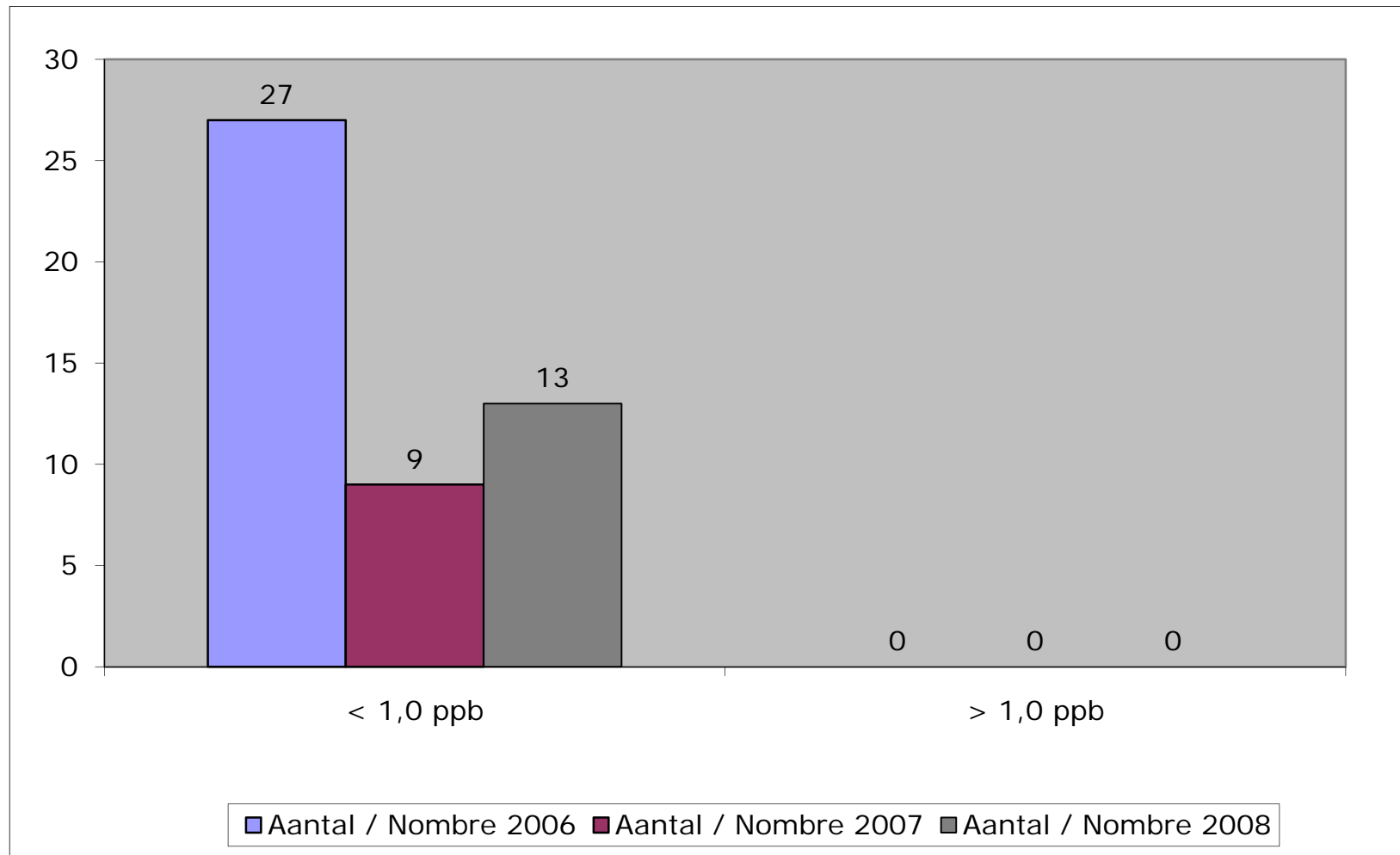
SYNAGRA

## MAIS CCM : FUM B1 & FUM B2

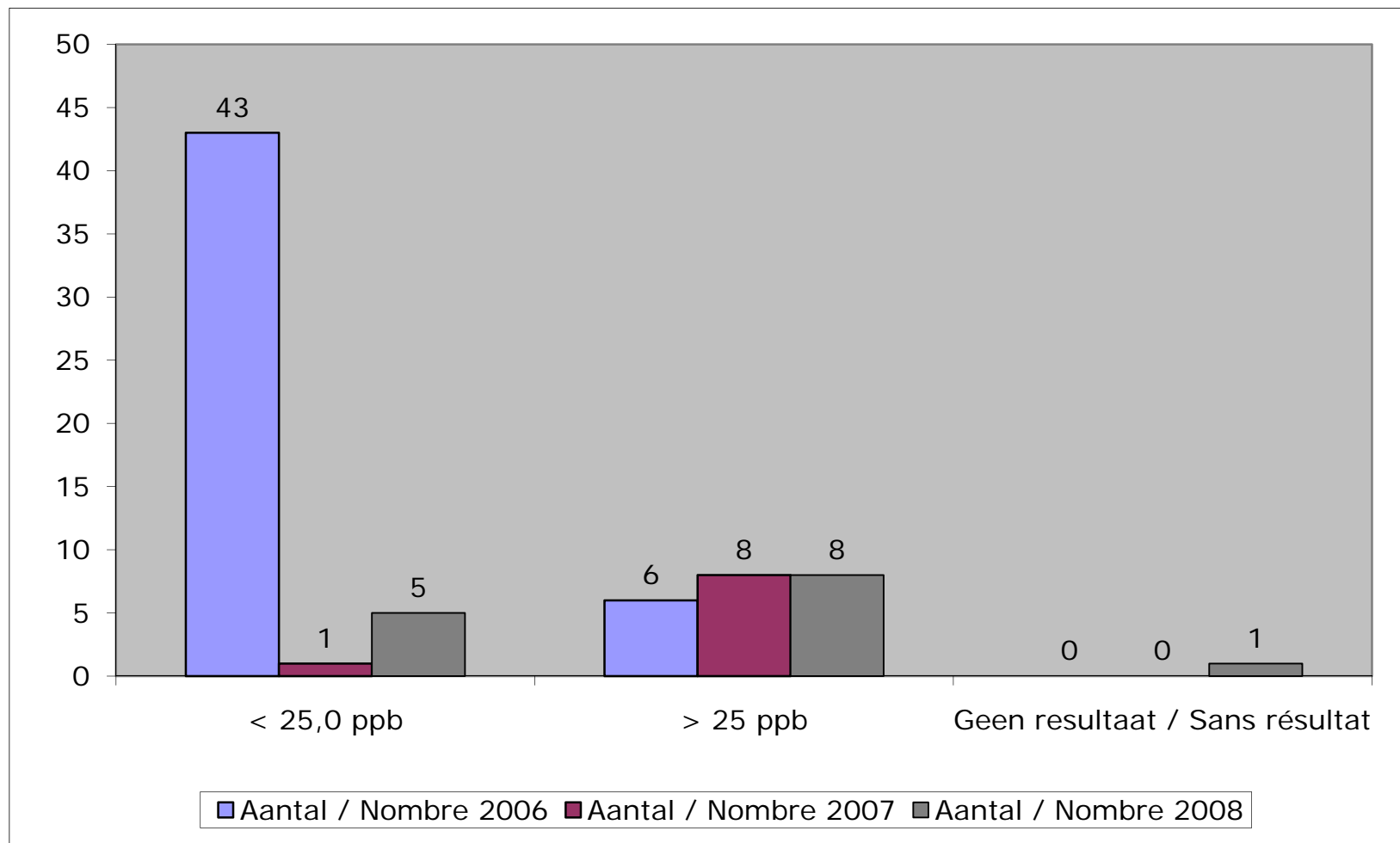


SYNAGRA

## MAIS CCM : OTA



## MAIS CCM : ZEA



SYNAGRA