

EVOLUTION DU PLAN D'ECHANTILLONNAGE SECTORIEL

~~~~

## **NIVEAU 1**

~~~~

EVOLUTIE VAN HET SECTORAAL BEMONSTERINGSPLAN



SYNAGRA

Participants / Deelnemers

Tonnages

Analyses



SYNAGRA

APERCU 2004 – 2008 OVERZICHT

	2004	2005	2006	2007	2008
PARTICIPANTS / DEELNEMERS	228	291	313	320	327
TONNAGES	2.416.097	2.632.294	2.784.592	3.398.253	3.043.562
Waarvan / dont					
* Tarwe	1.641.336	1.861.224	1.936.589	1.950.882	1.931.278
* Gerst	374.883	329.762	328.188	390.135	477.757
* Maïs	255.202	313.227	343.324	802.530	480.971
* Maïs CCM (+ verzuurd)	22.138	14.079	10.915	56.015	58.823
* Haver	16403	19.175	18.521	42.502	43.075
* Rogge	5.012	2.989	7.695	2.192	1.527
* Triticale	12.930	22.369	25.605	14.578	13.100
* Spelt	17.807	23.614	33.905	27.882	37.031
* Erwten	70.386	45.855	79.851	111.538	0
ANALYSES	718	598	446	598	647
Waarvan / dont					
* Schimmels / Moisissures	149	113	0	0	0
* Mycotoxines	290	238	238	329	336
* Pesticides	279	247	208	269	311



SYNAGRA

Comparaison des résultats d'analyses

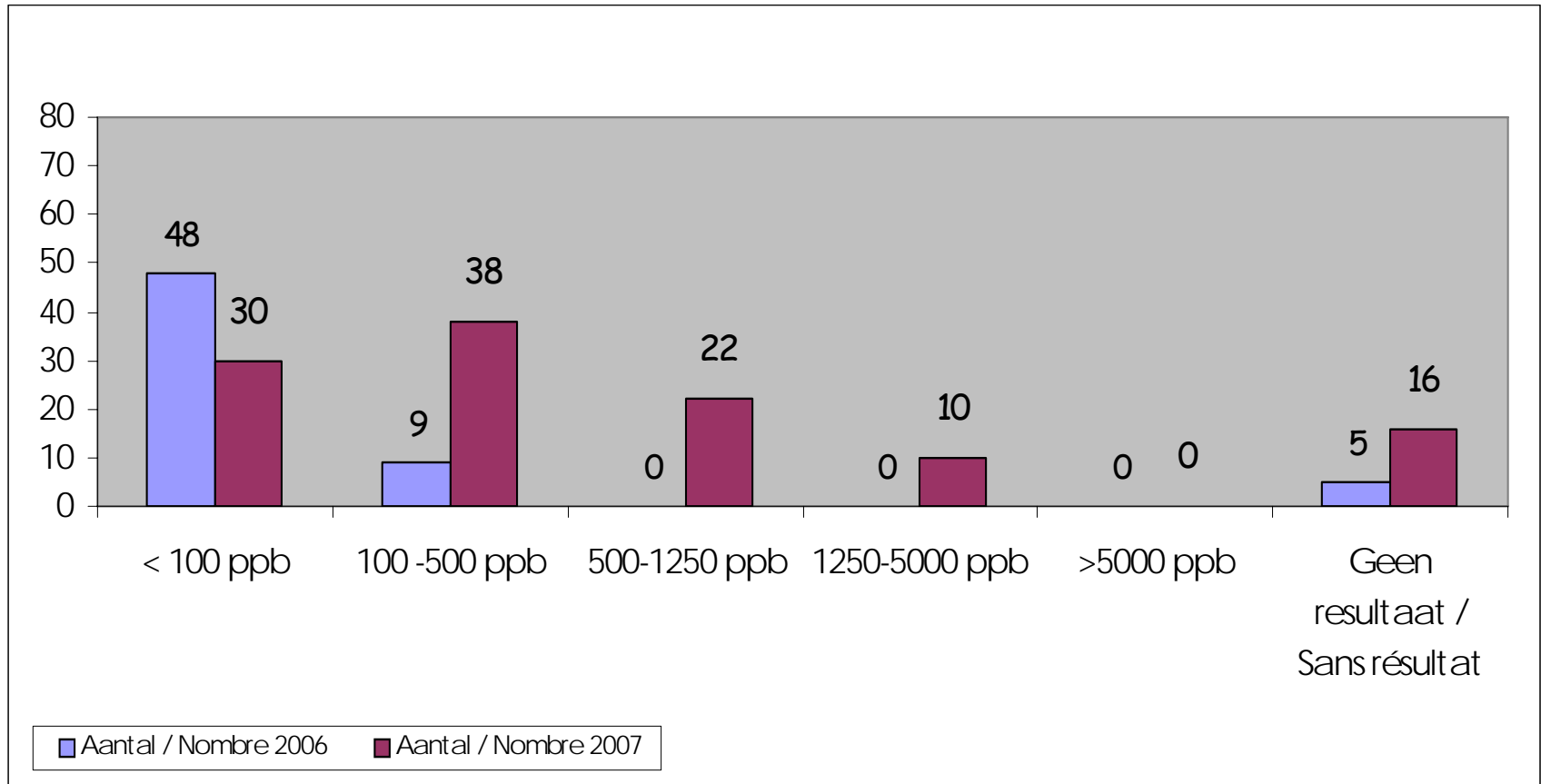
2006 - 2007

Vergelijking analyseresultaten



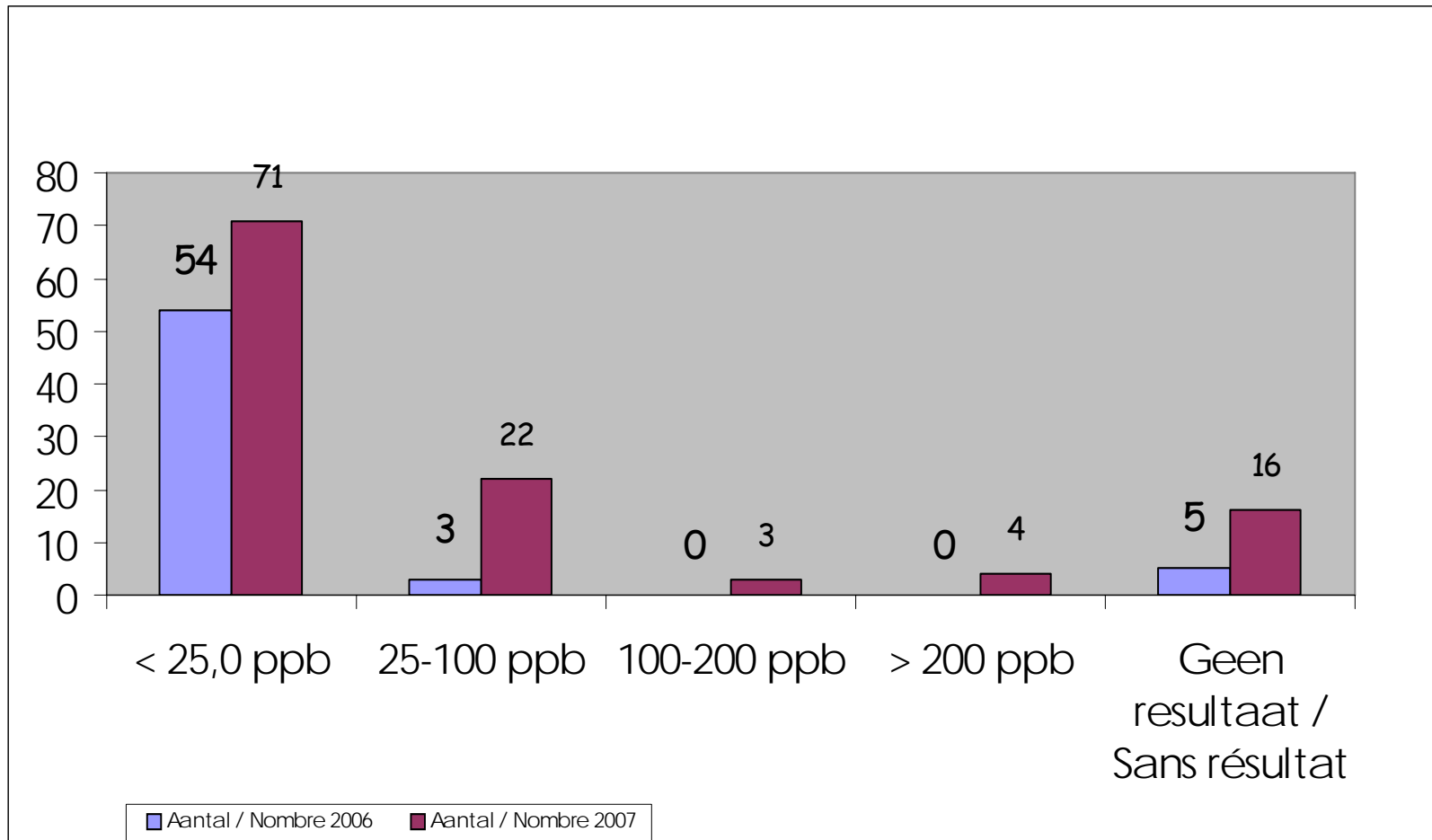
SYNAGRA

TARWE – FROMENT : DON

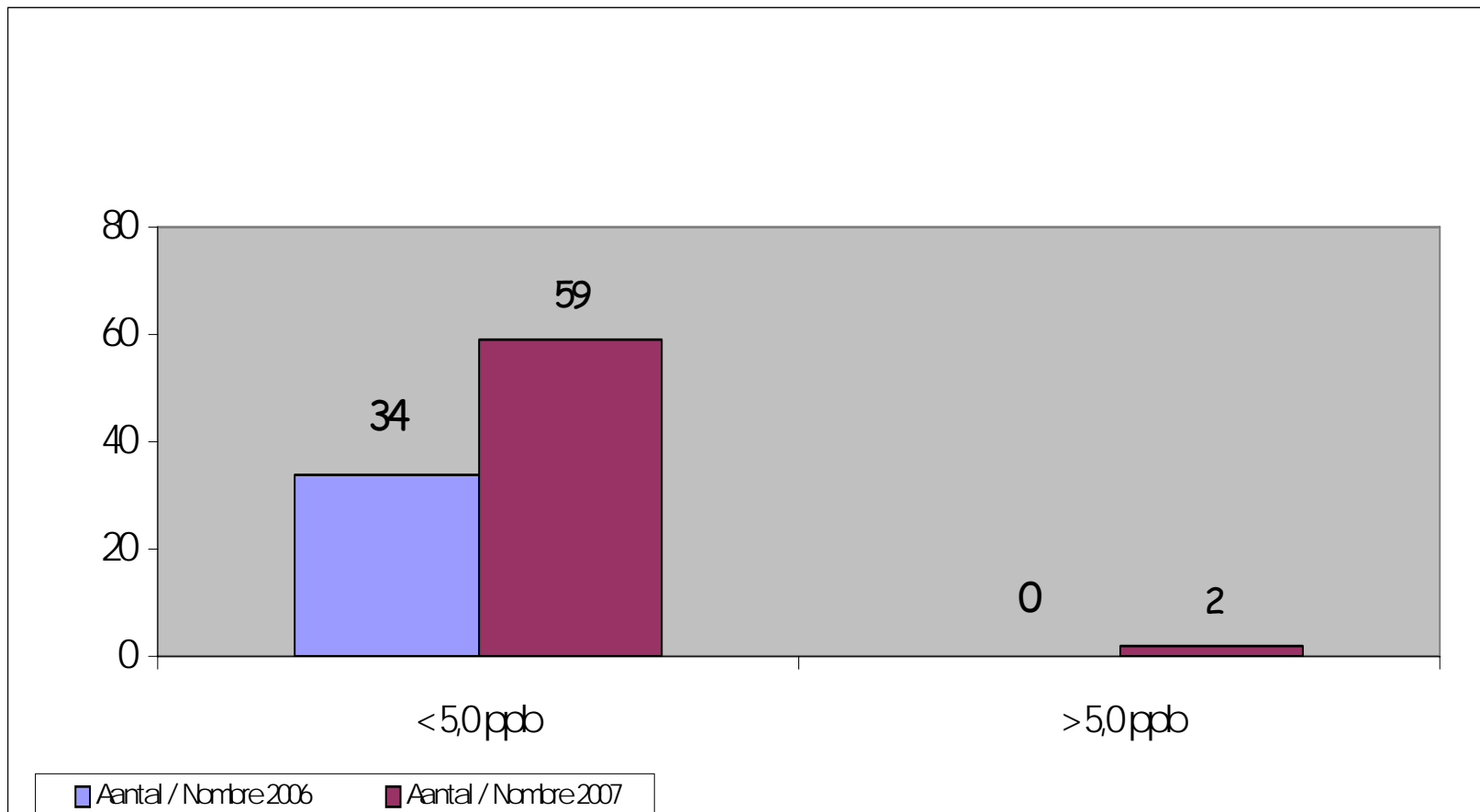


SYNAGRA

TARWE – FROMENT : ZEA

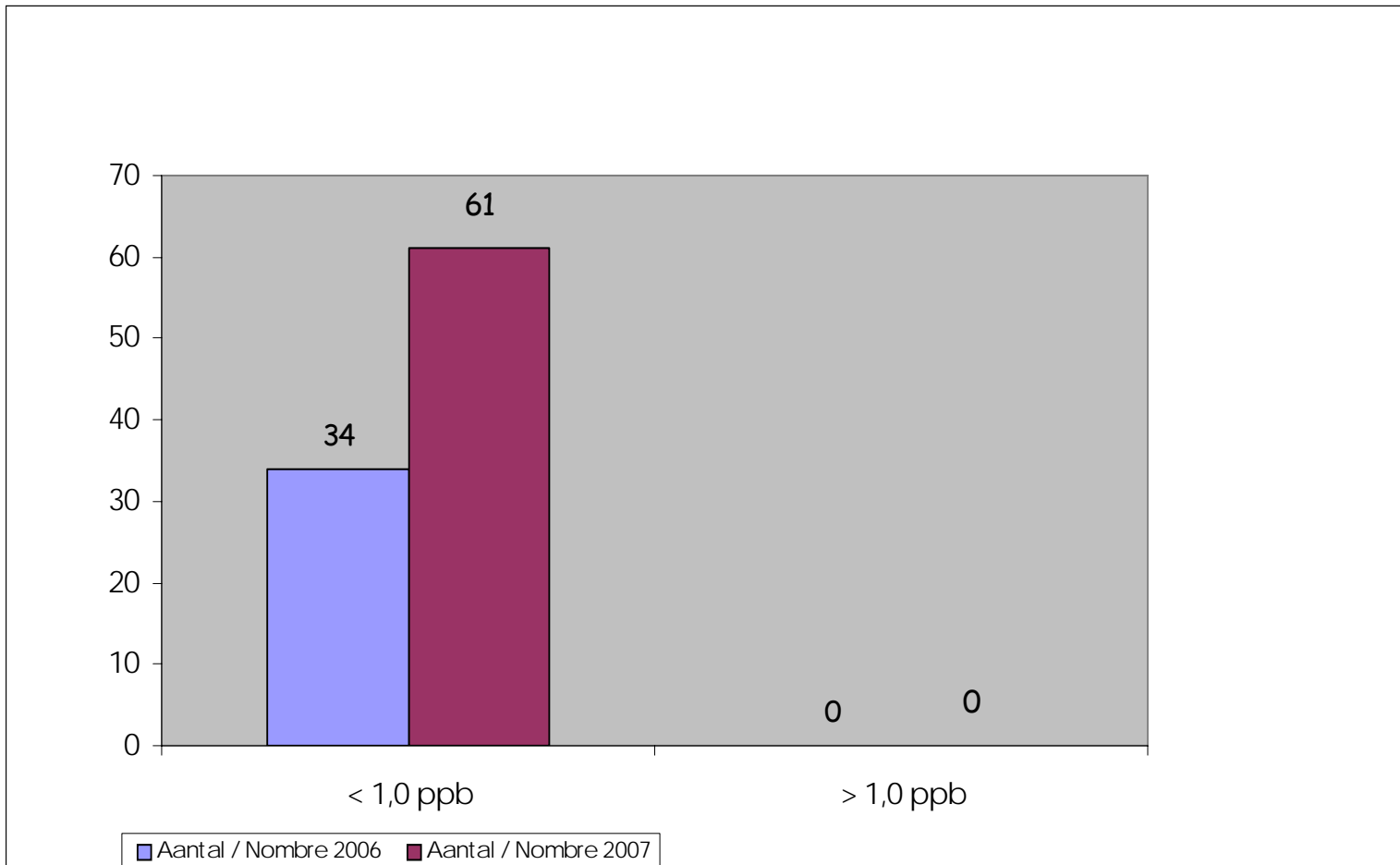


TARWE – FROMENT : FUM B1 & B2

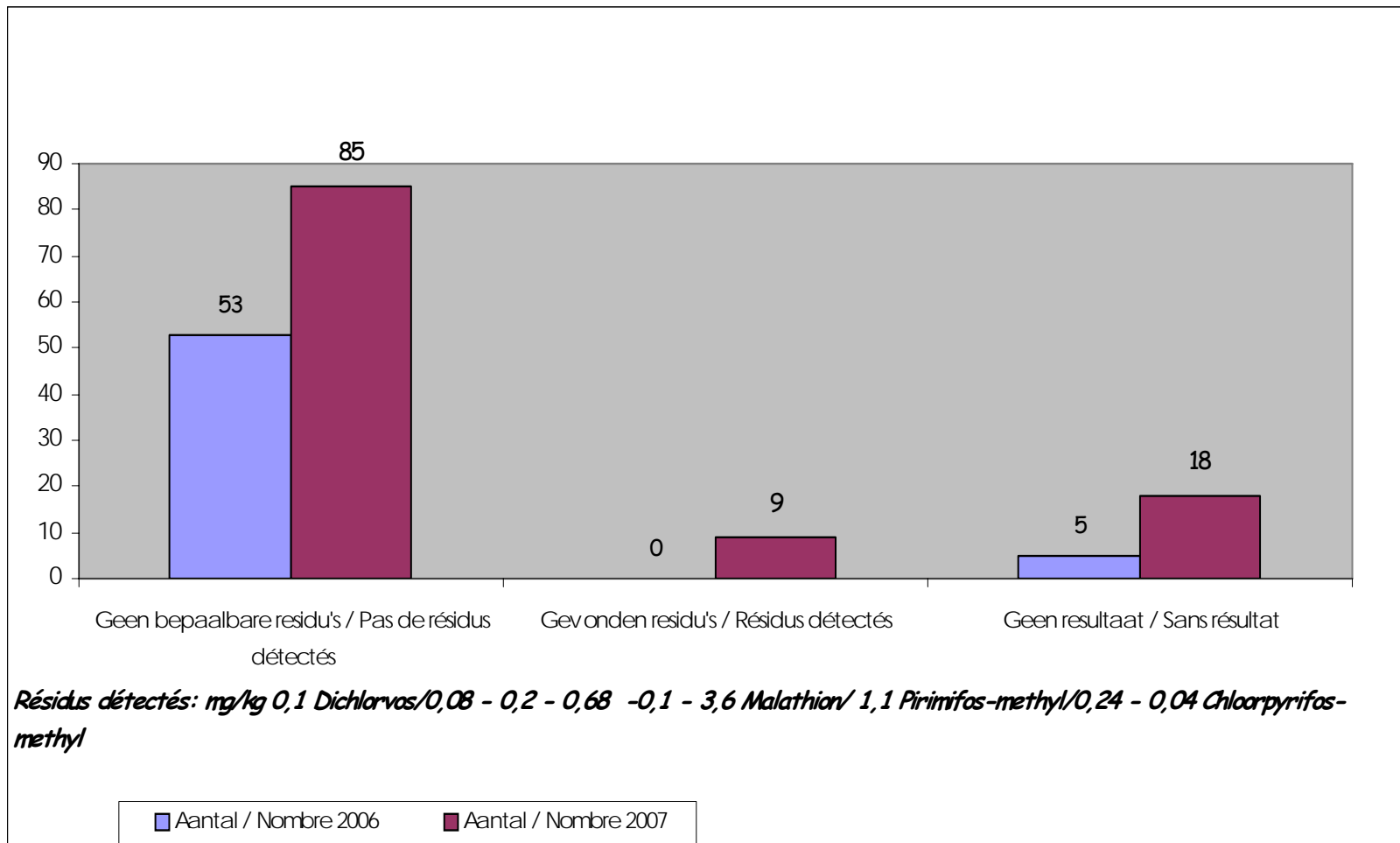


SYNAGRA

TARWE – FROMENT : OTA

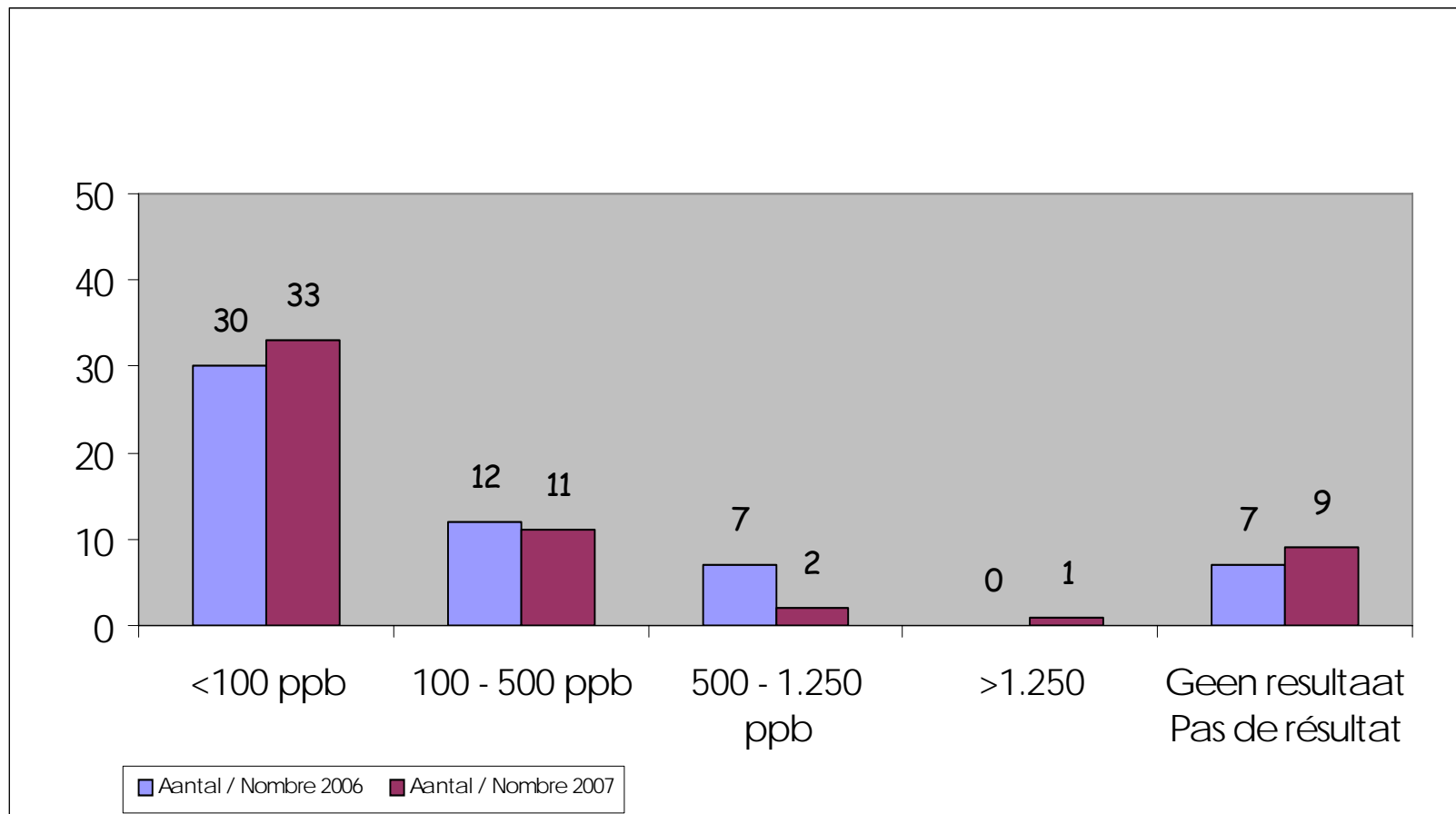


TARWE – FROMENT : RESIDUS PESTICIDES



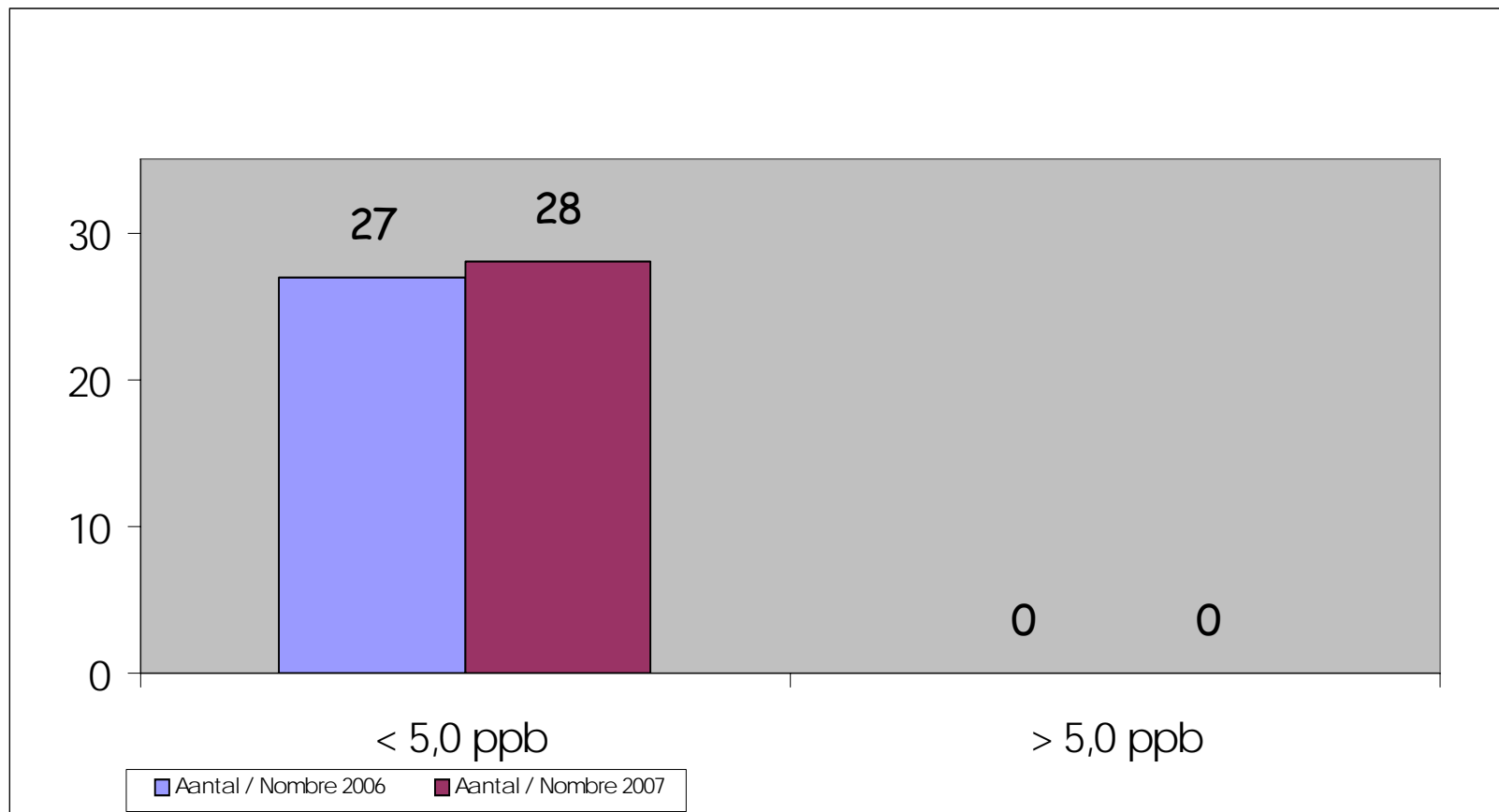
SYNAGRA

GERST – ESCOURGEON : DON

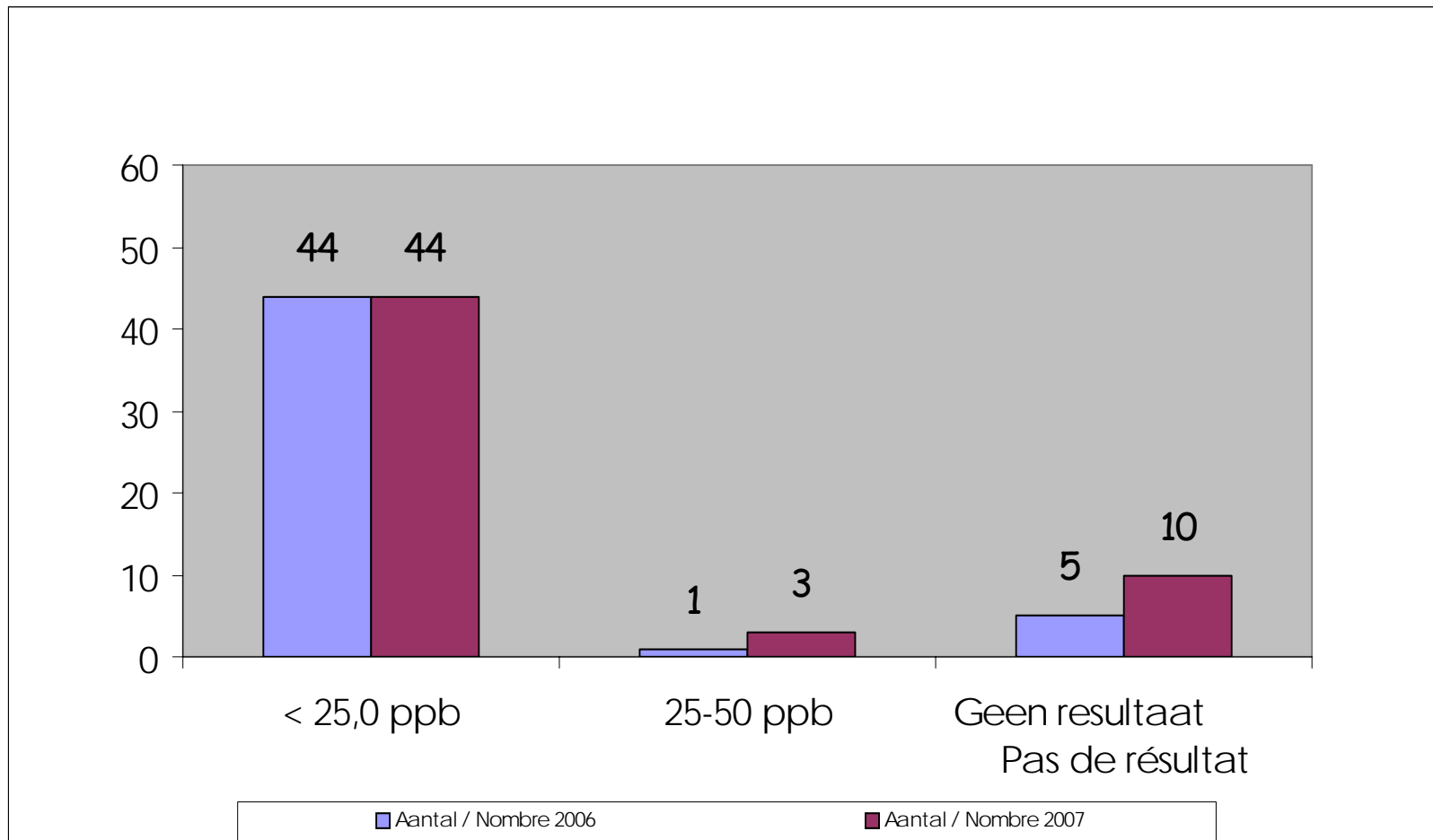


SYNAGRA

GERST – ESCOURGEON : FUM B1 & B2

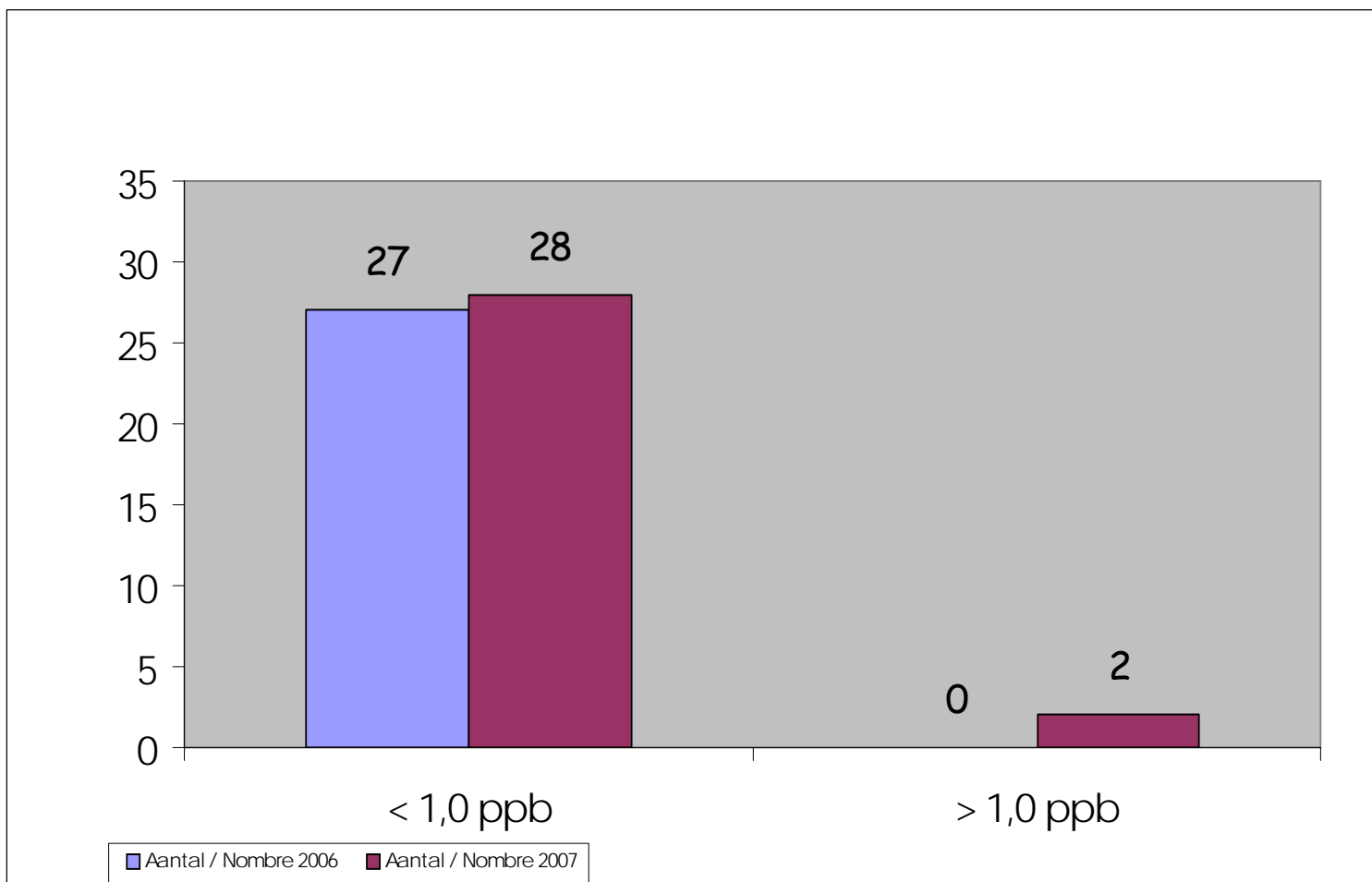


GERST – ESCOURGEON : ZEA

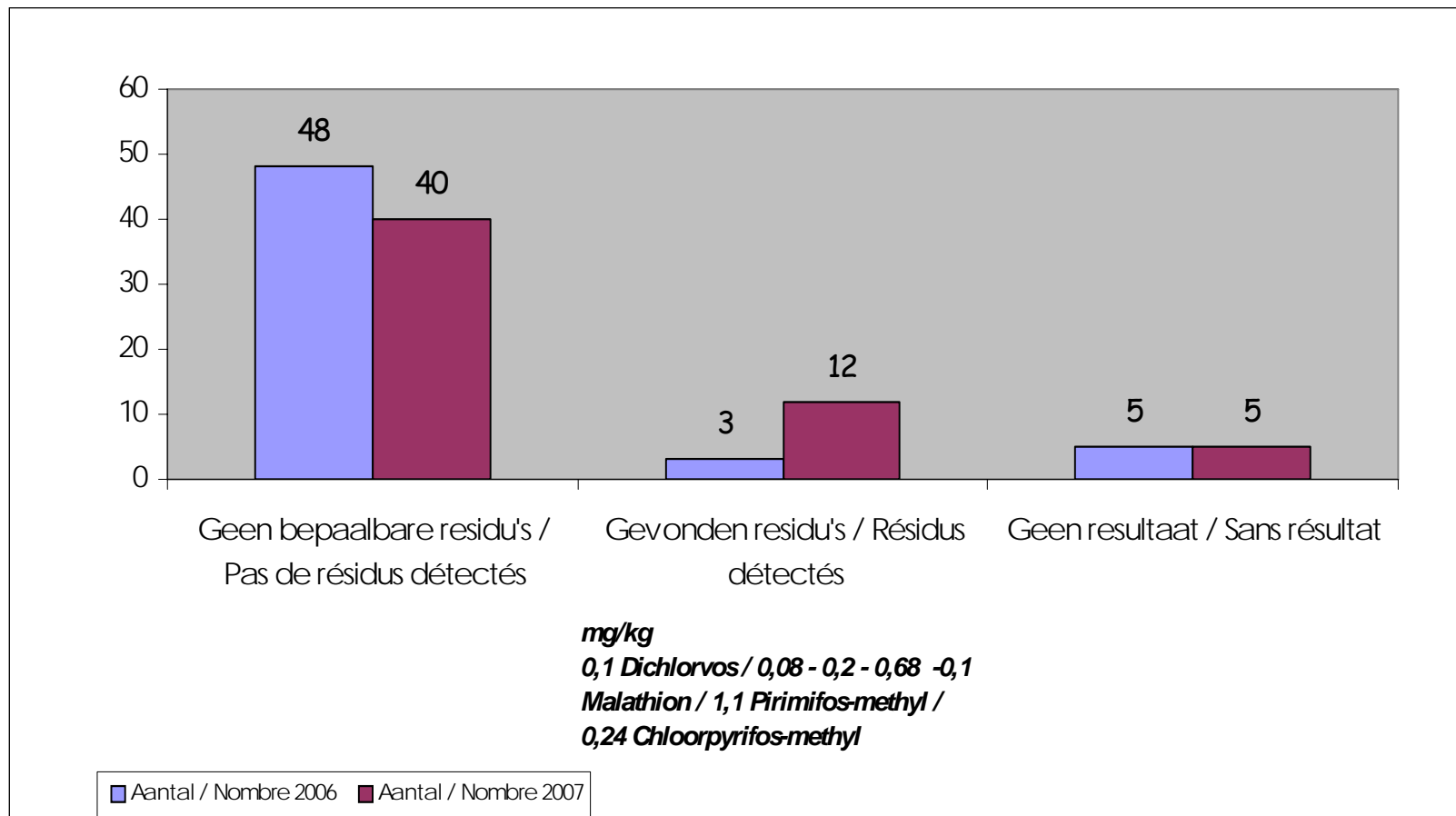


SYNAGRA

GERST – ESCOURGEON : OTA

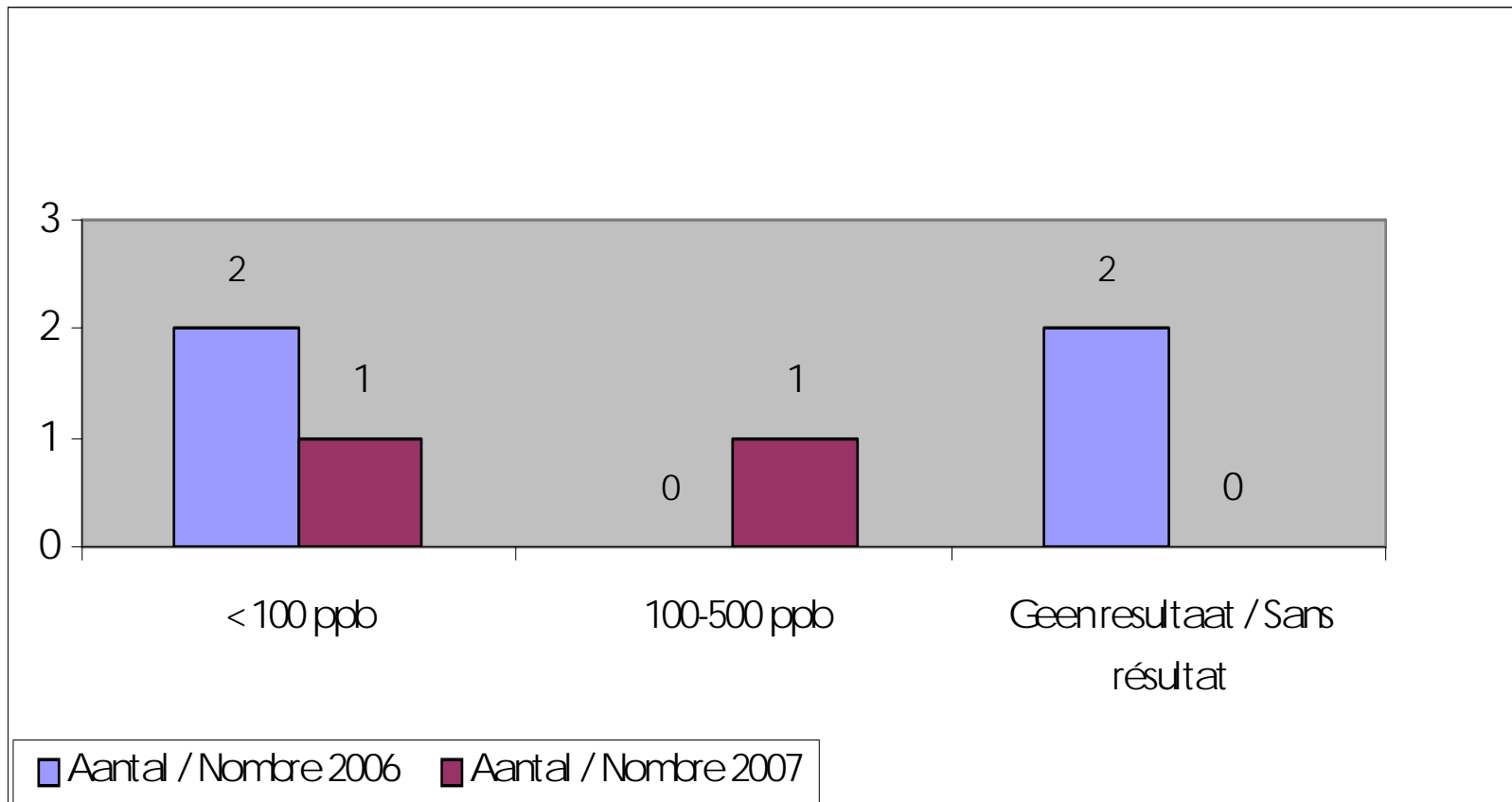


GERST – ESCOURGEON : RESIDUS PESTICIDES

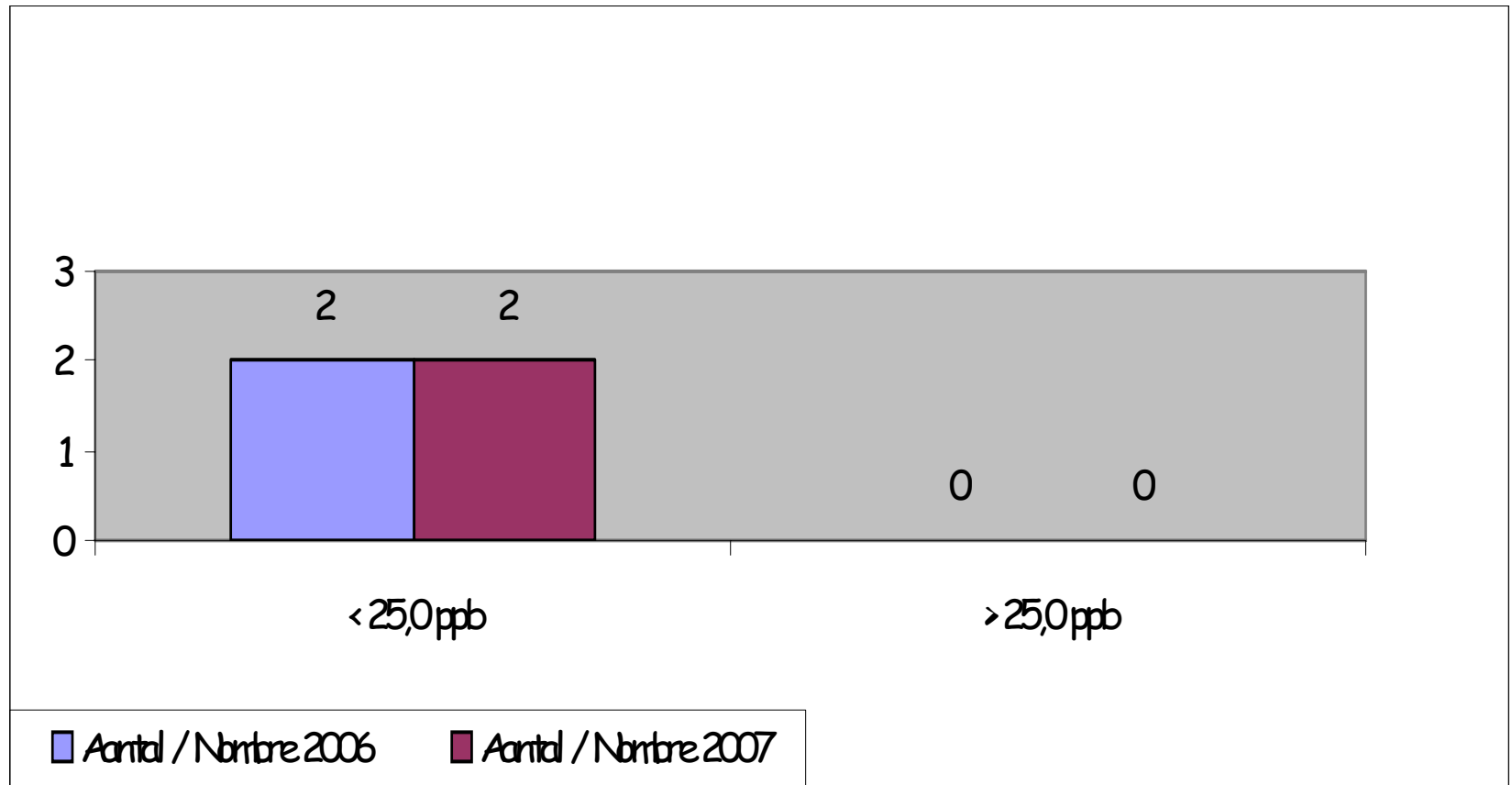


SYNAGRA

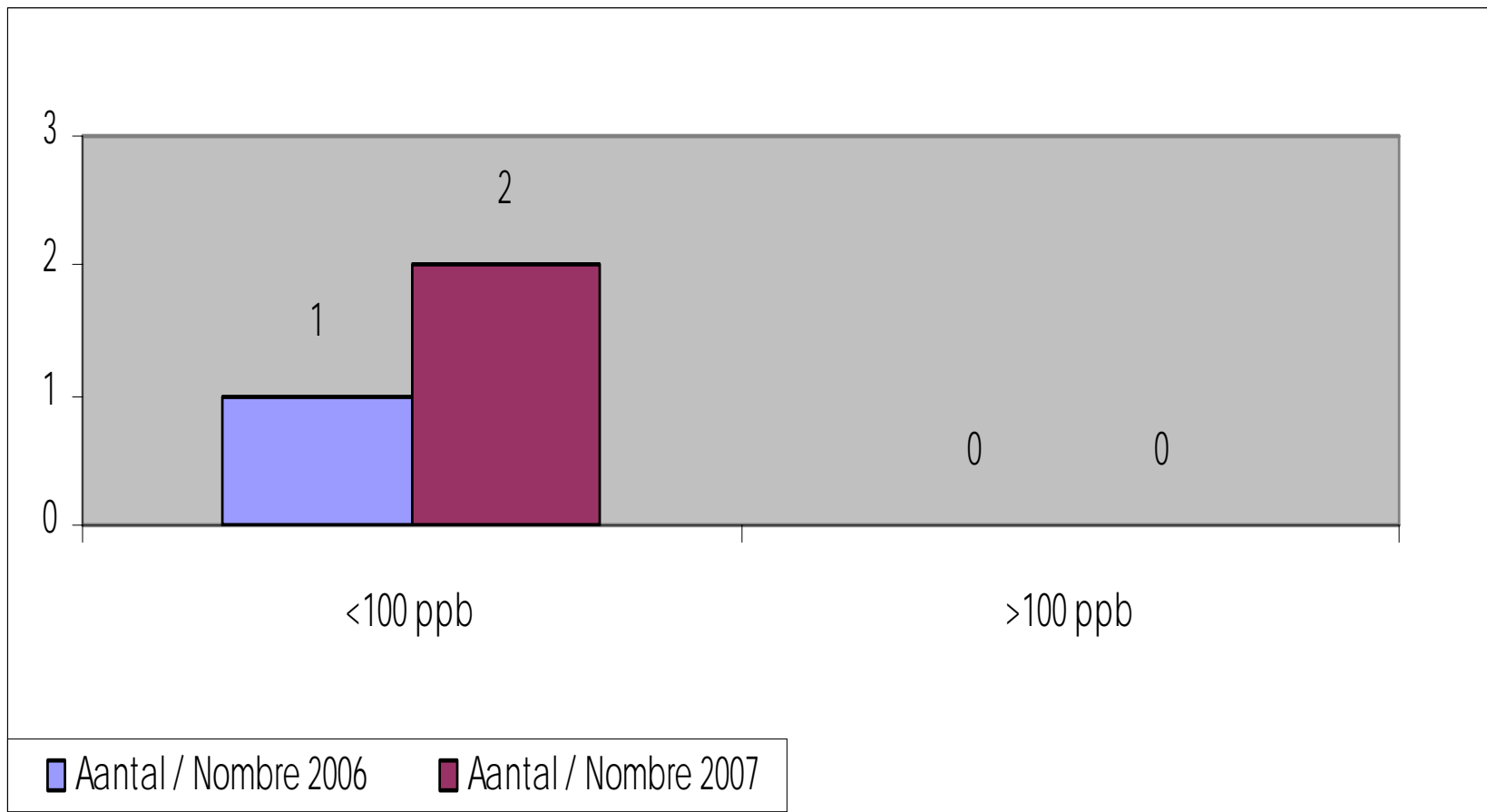
ROGGE – SEIGLE : DON



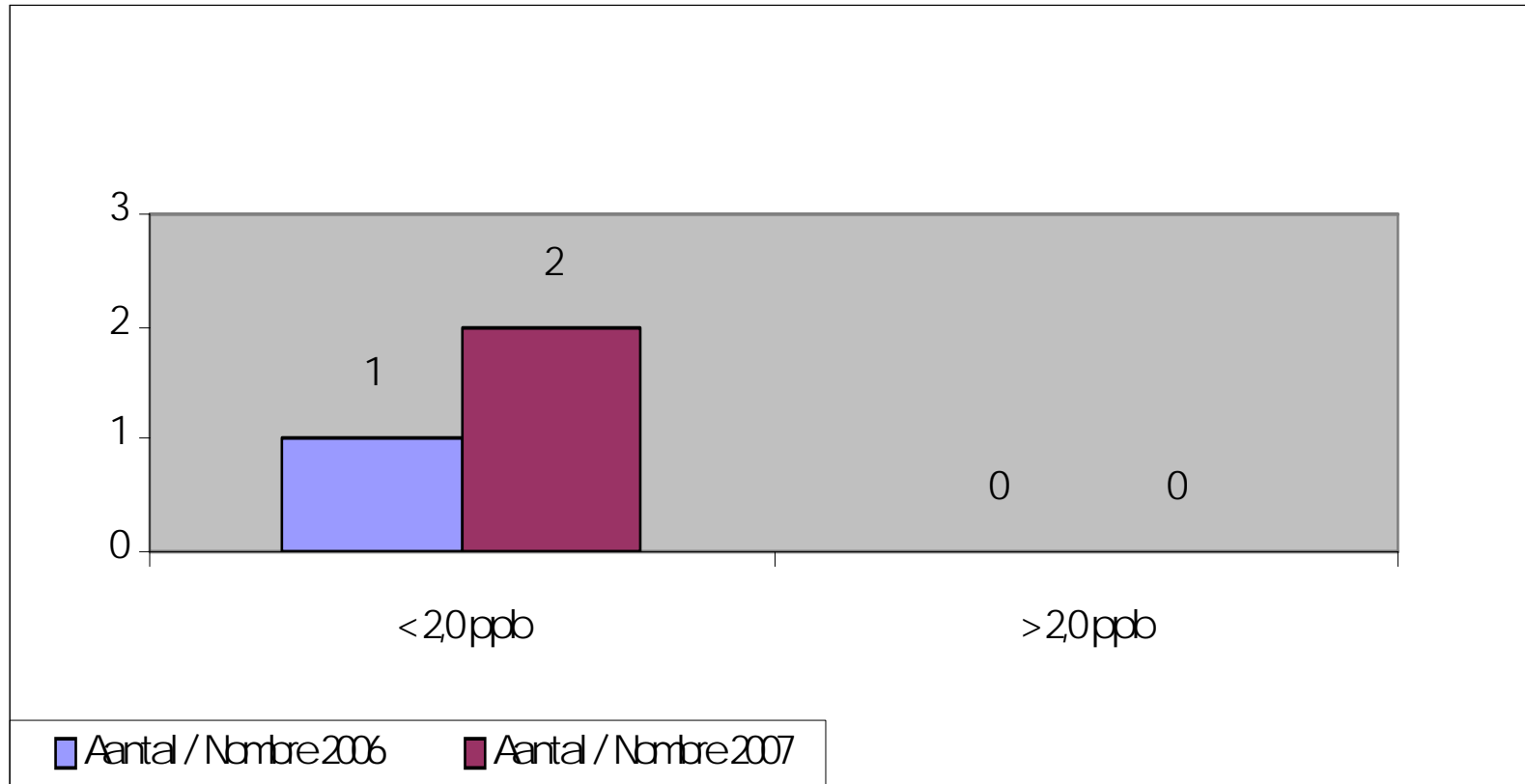
ROGGE – SEIGLE : ZEA



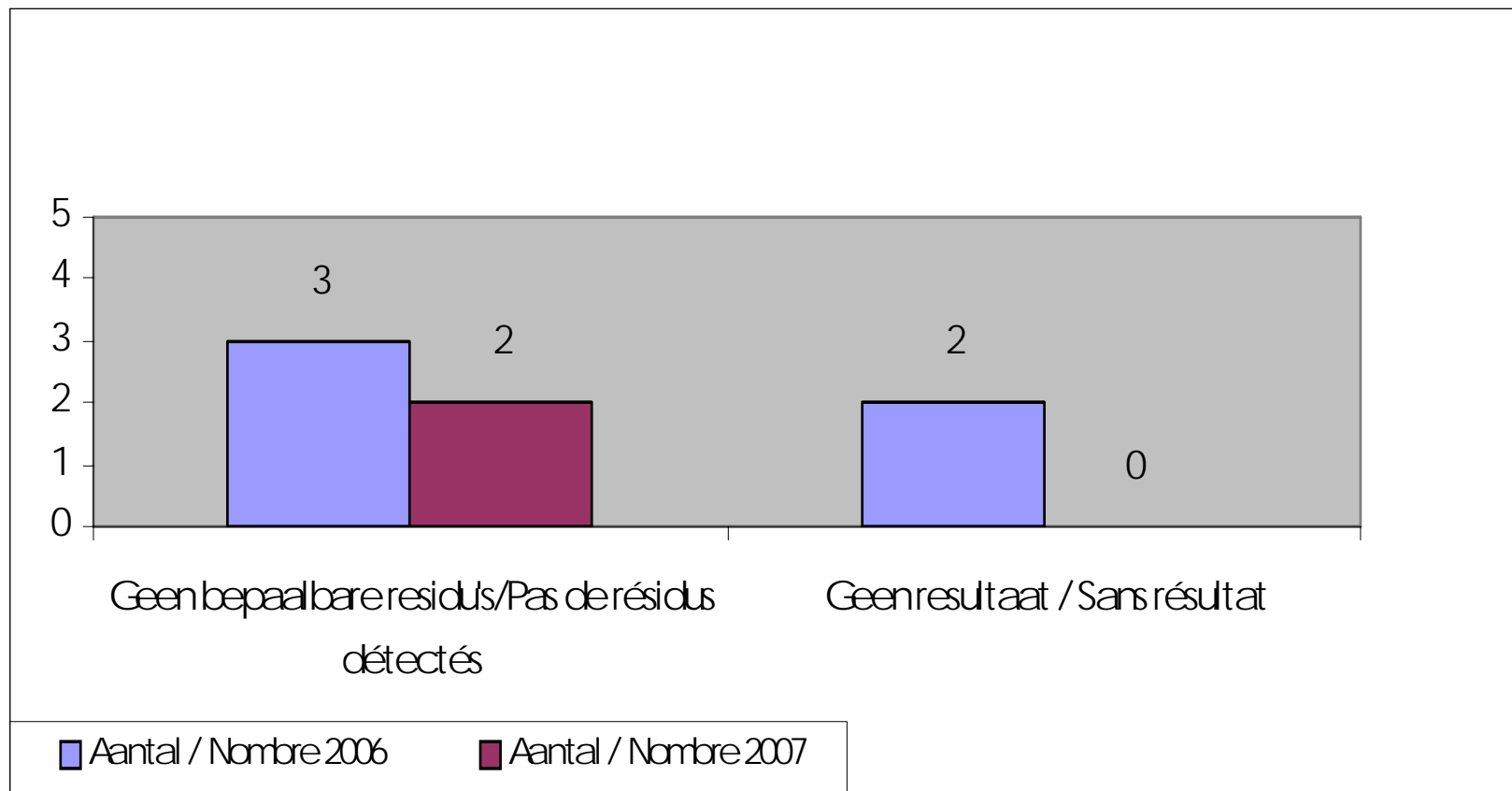
ROGGE – SEIGLE FUM B1 & B2



ROGGE – SEIGLE : OTA

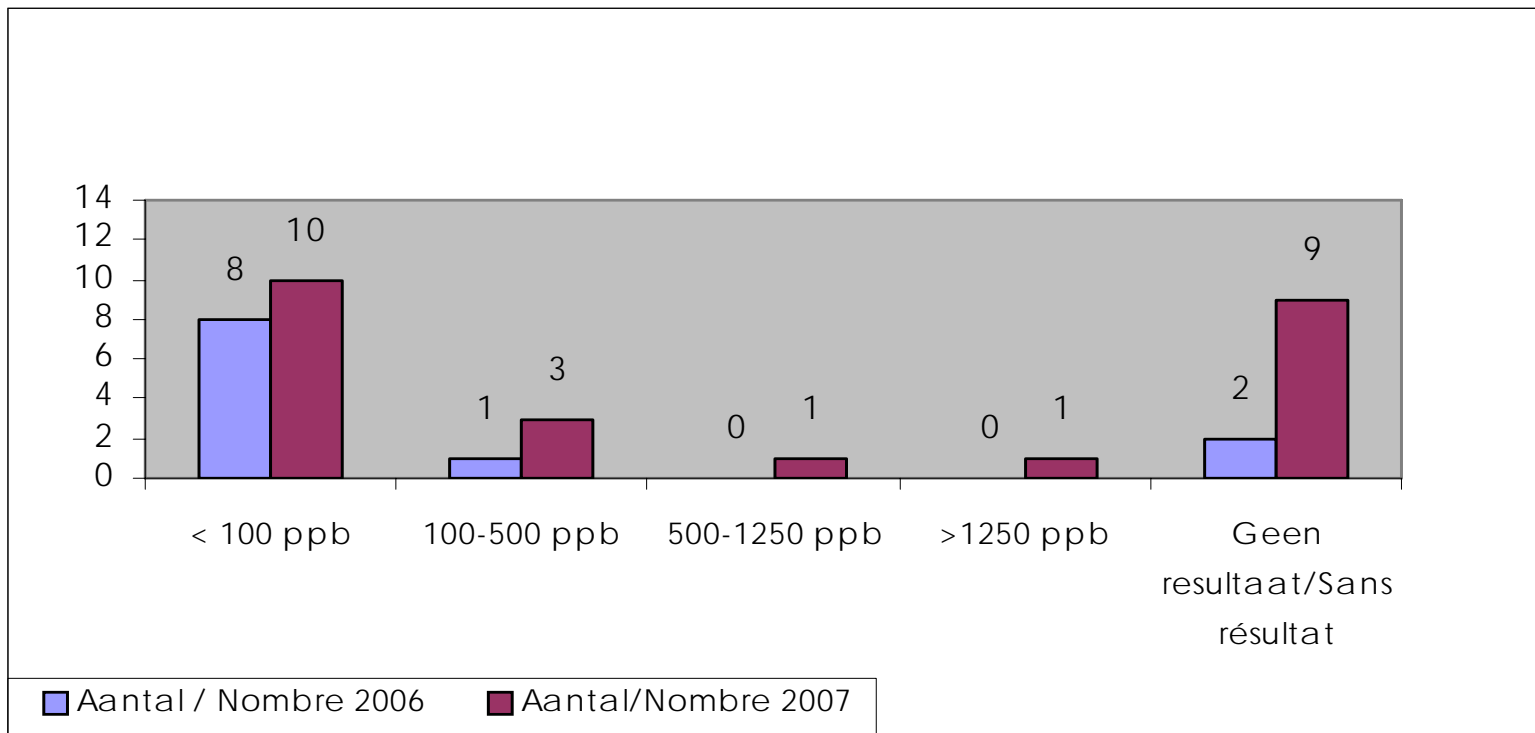


ROGGE – SEIGLE : RESIDUS PESTICIDES

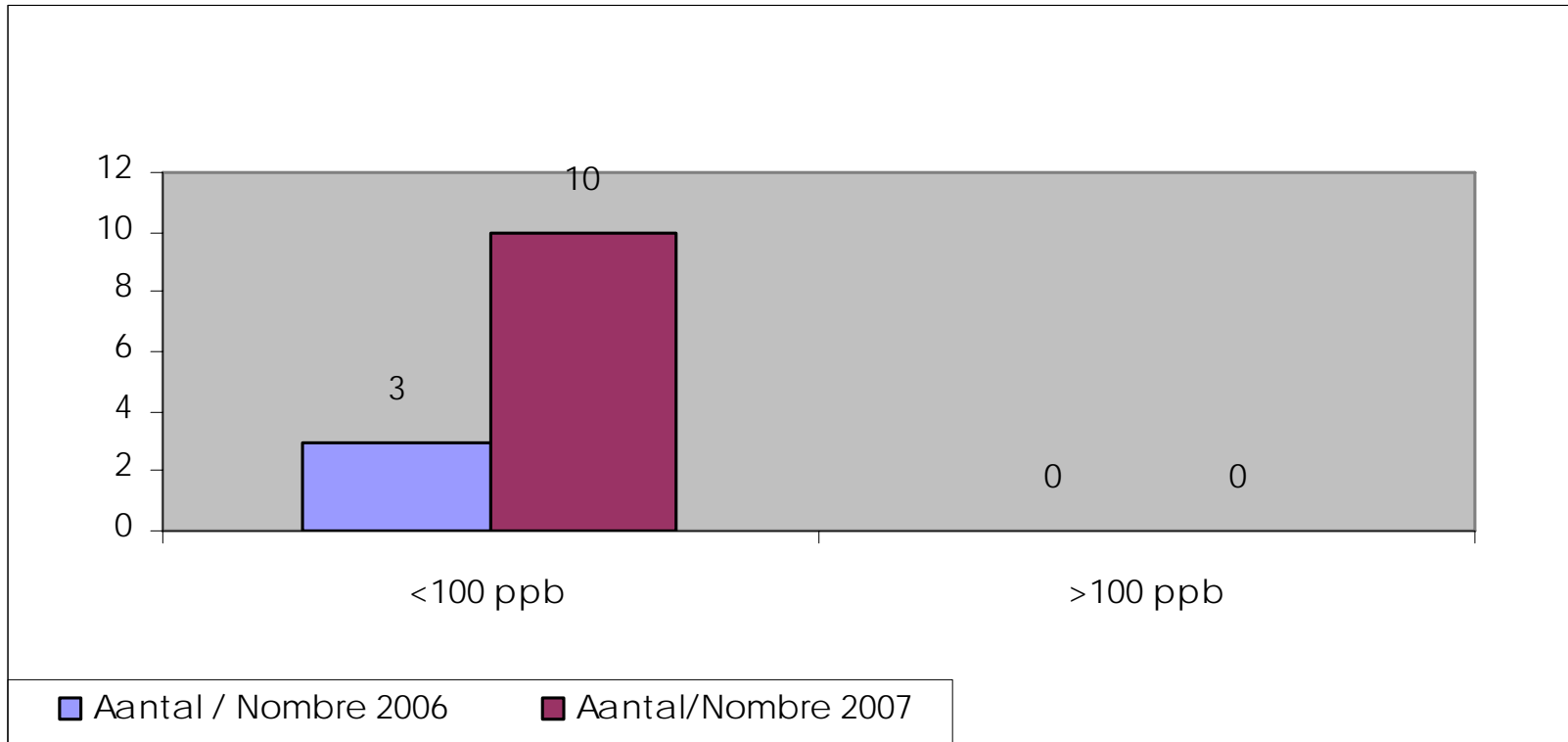


SYNAGRA

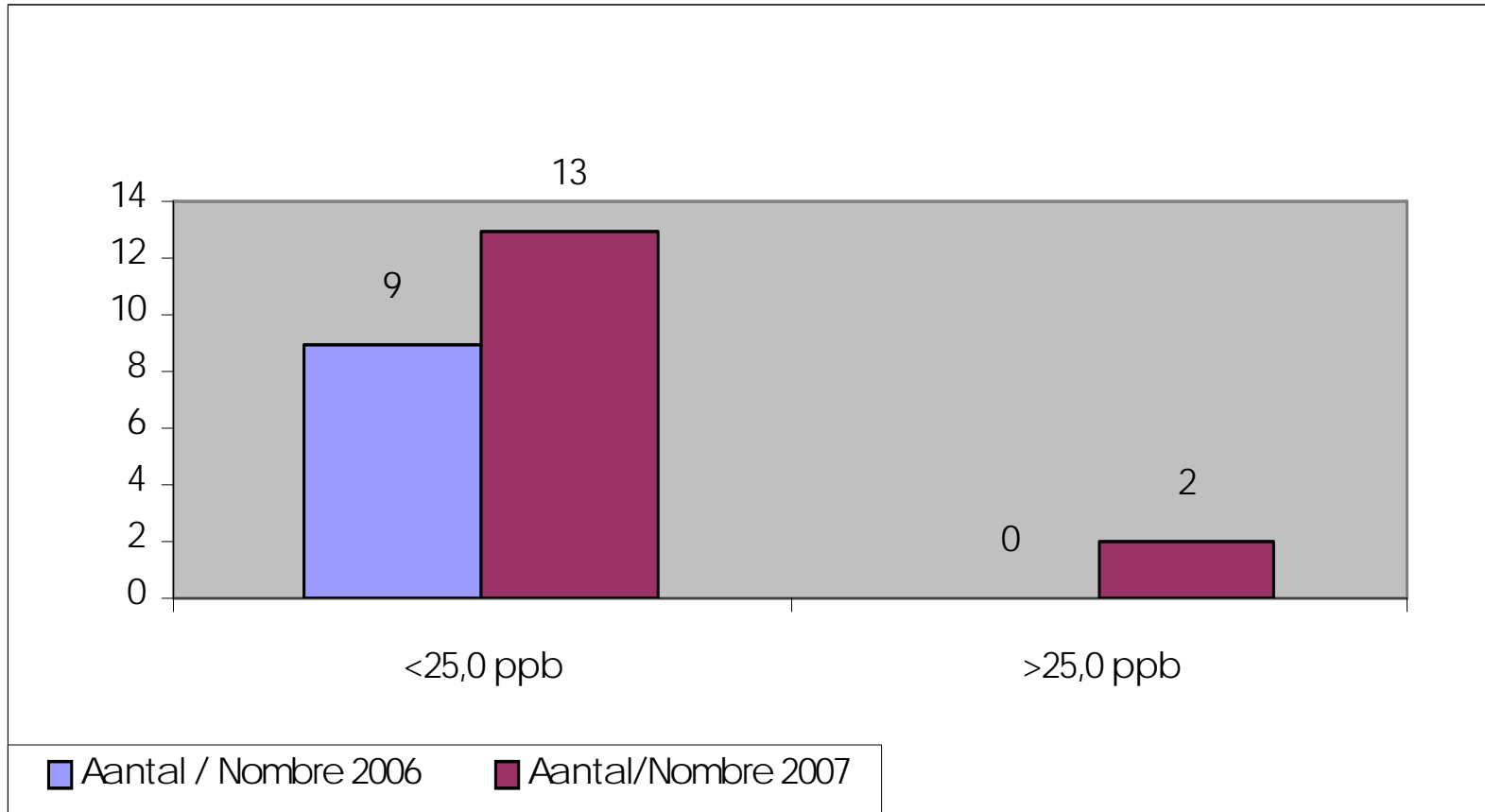
HAVER – AVOINE : DON



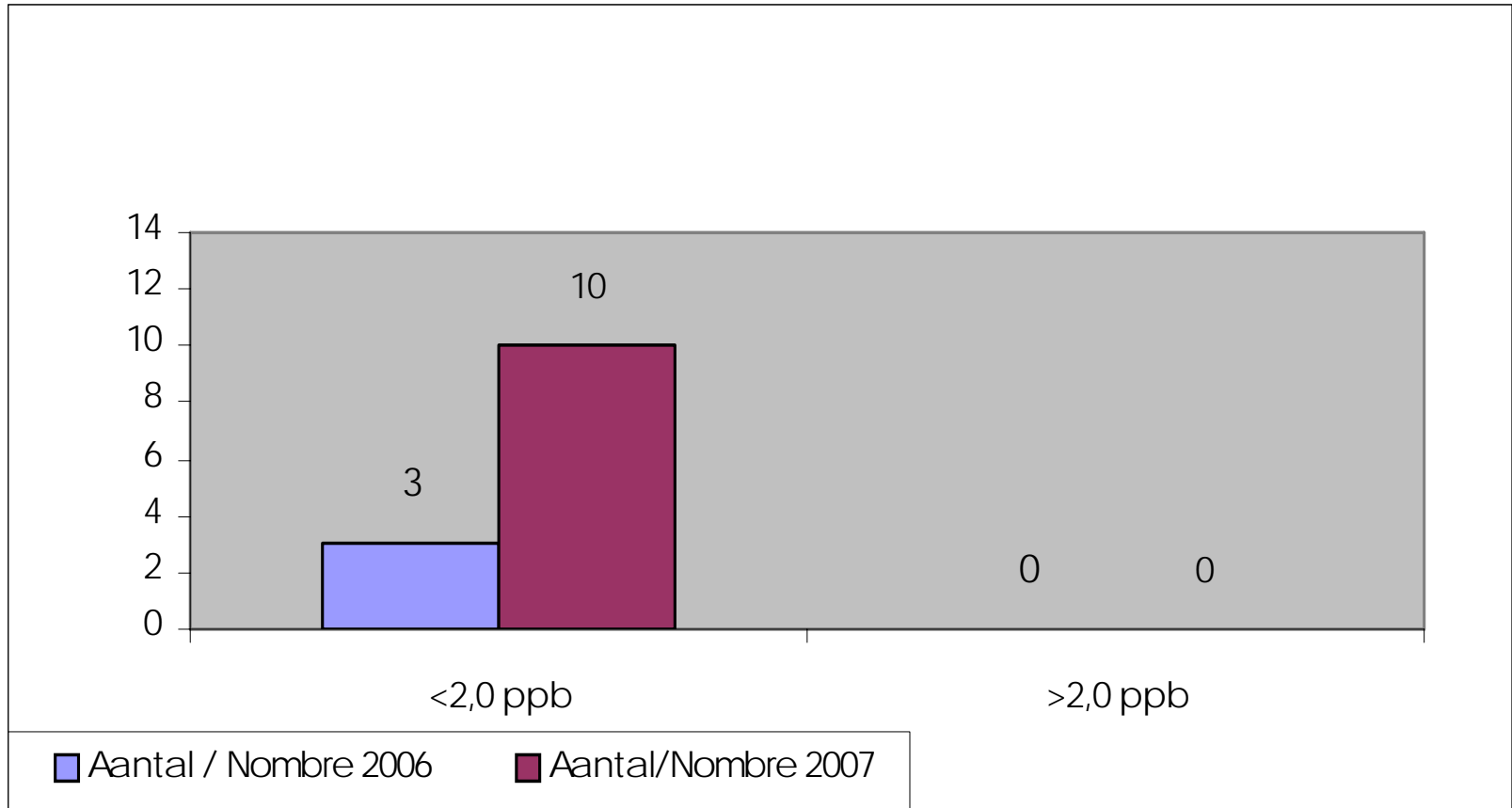
HAVER – AVOINE : FUM B1 & B2



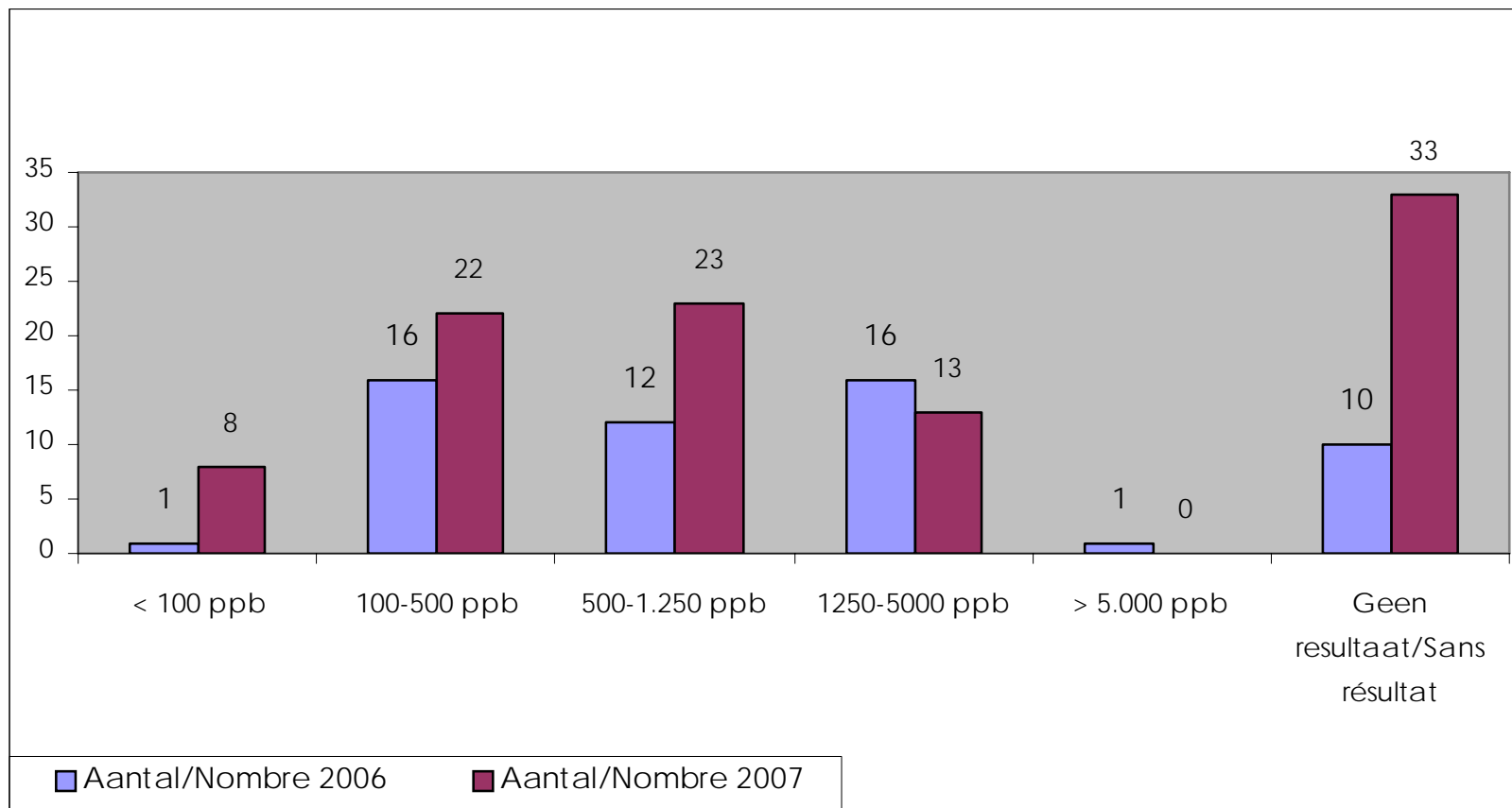
HAVER – AVOINE : ZEA



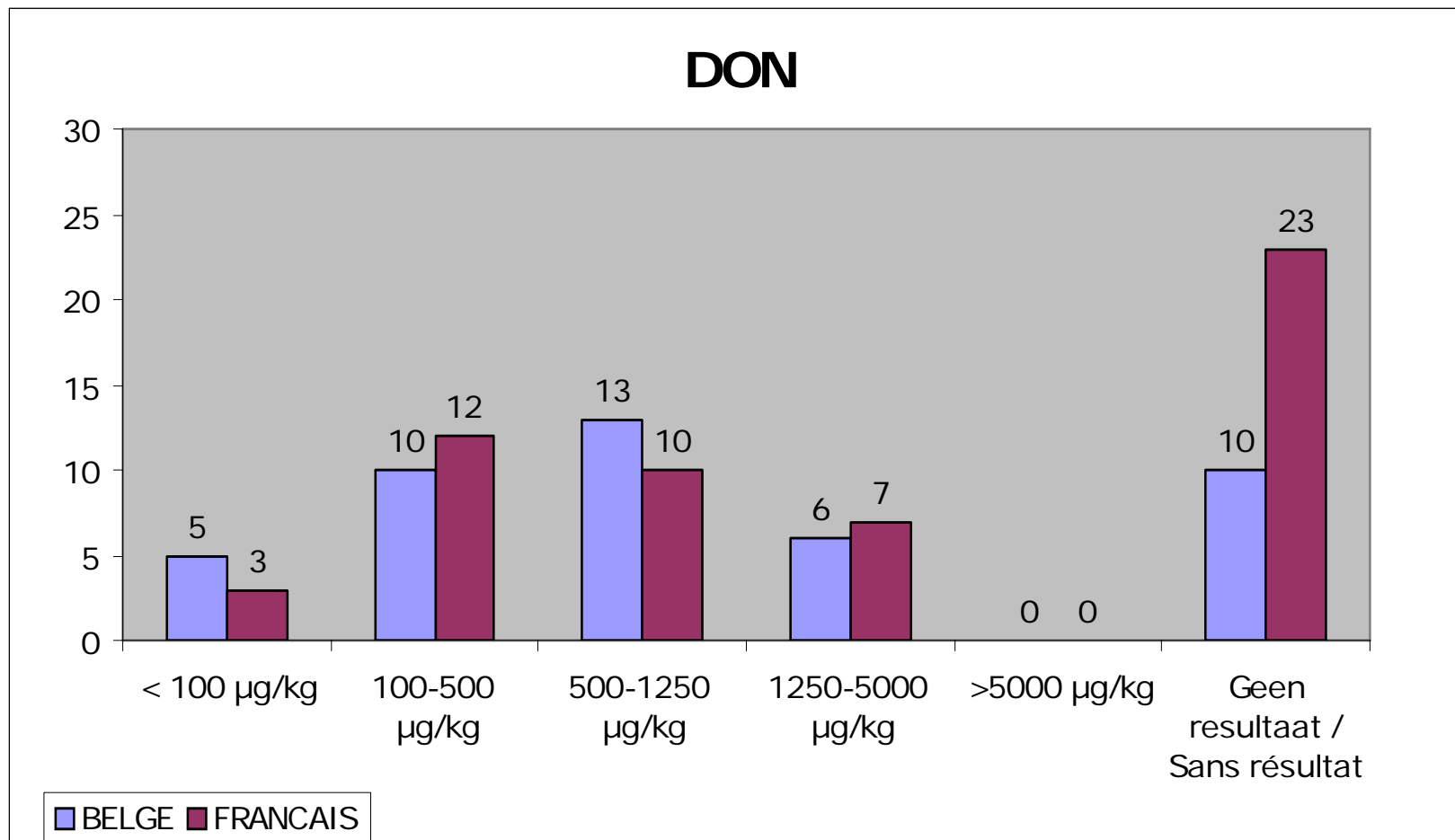
HAVER – AVOINE : OTA



MAIS (BE & FR) : DON

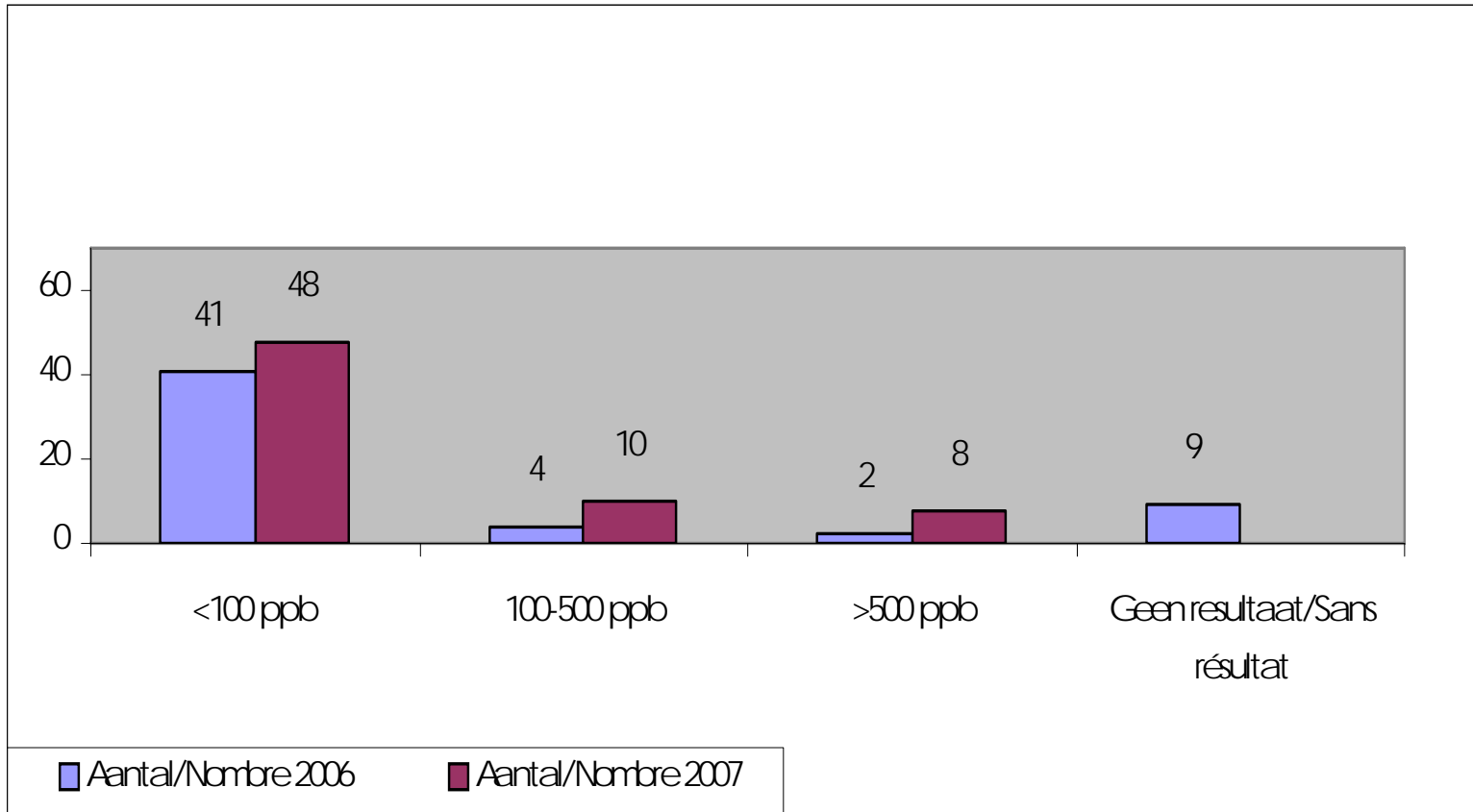


DON : COMPARAISON MAIS BELGE & FRANCAIS

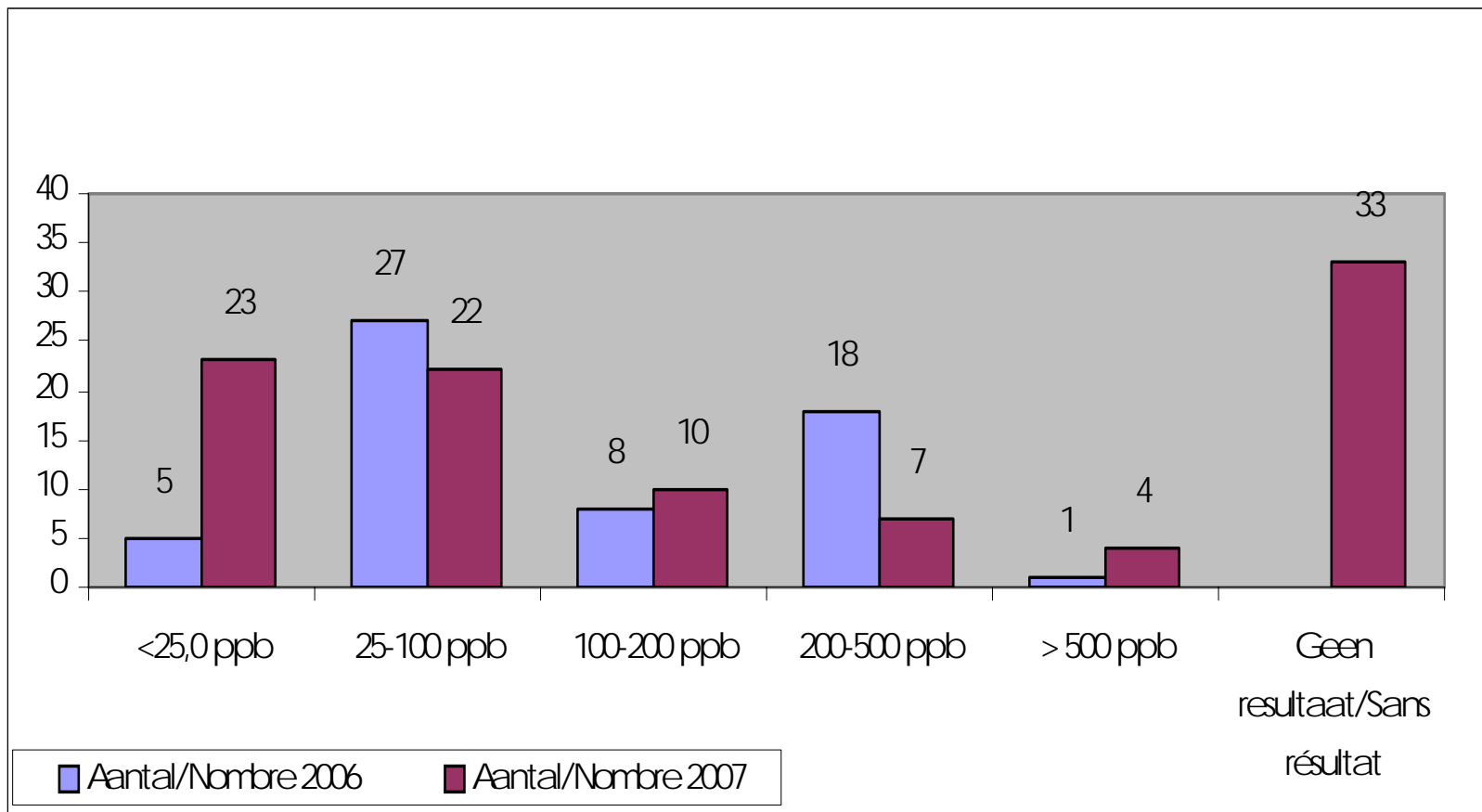


SYNAGRA

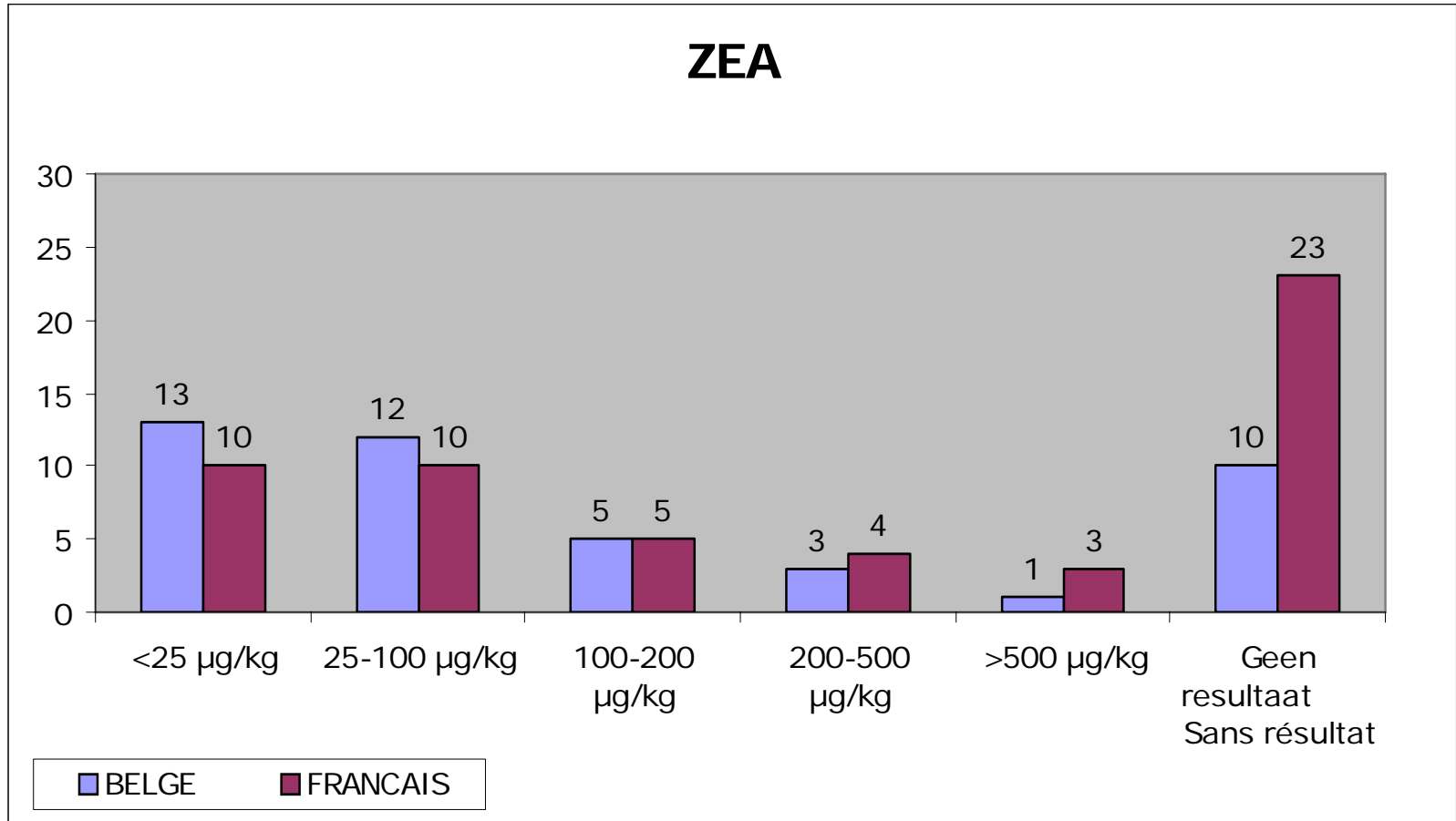
MAIS (BE & FR) : FUM B1 & B2



MAIS (BE & FR) : ZEA

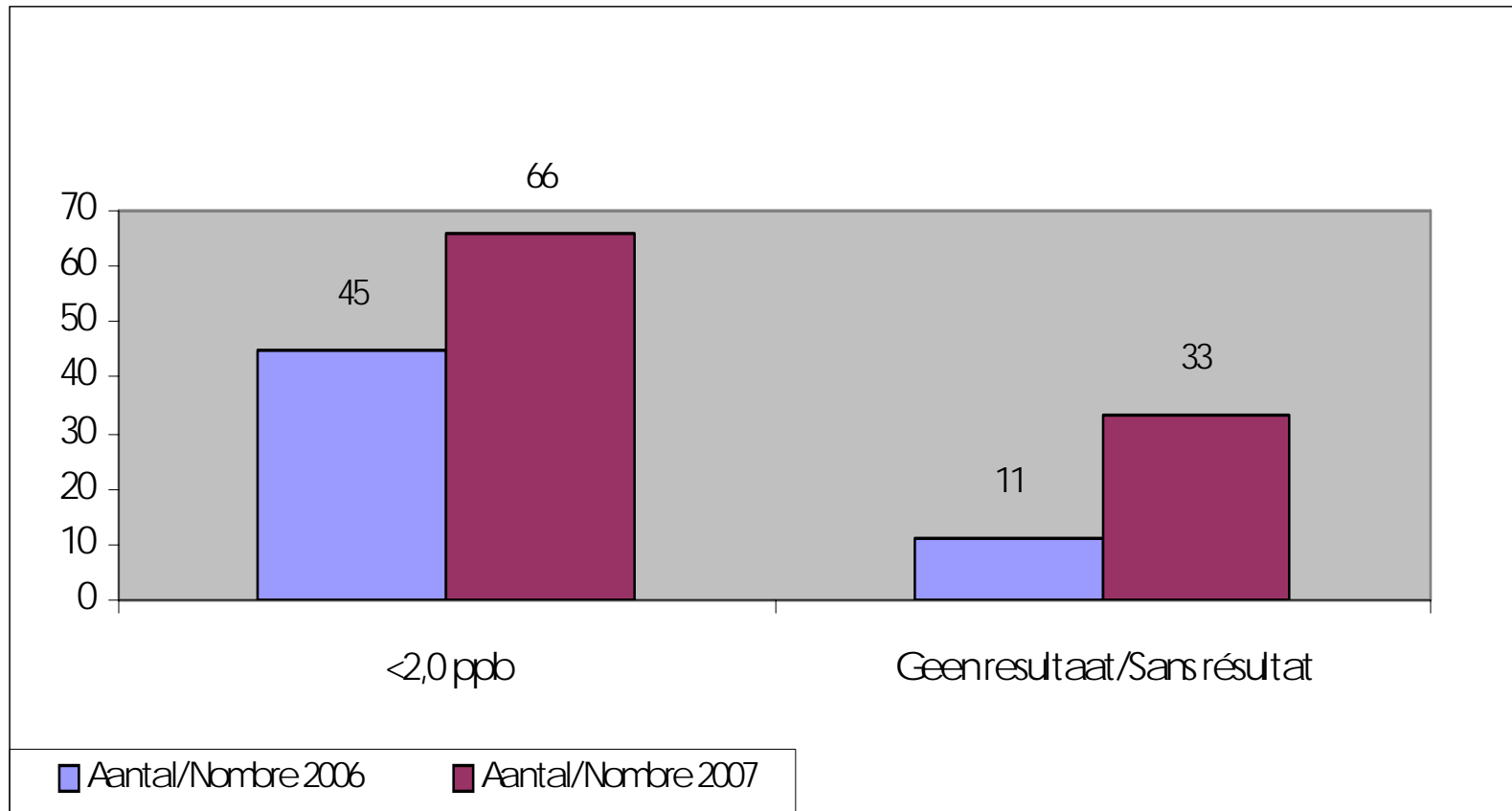


ZEA : VERGELIJING BELGISCHE & FRANSE MAIS



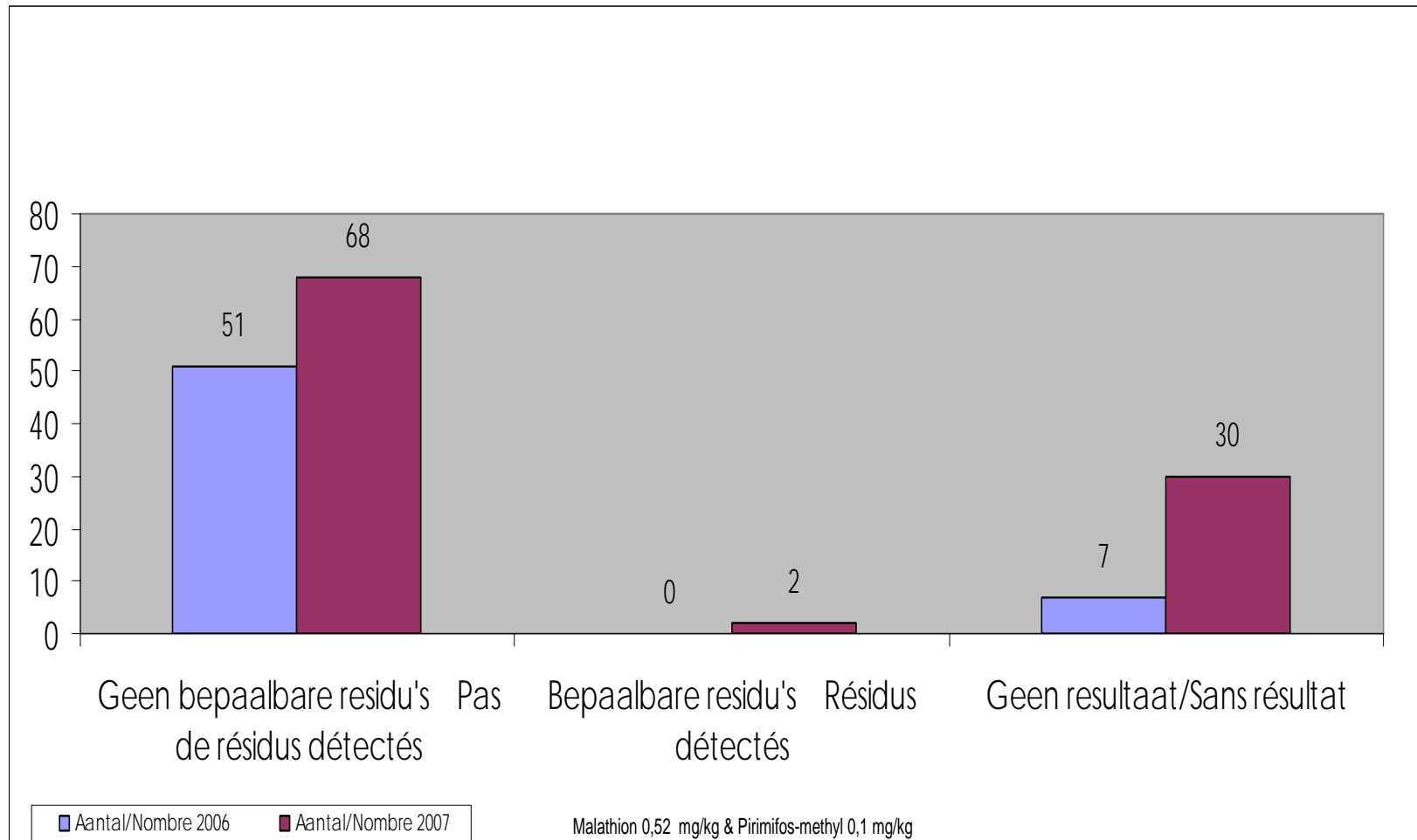
SYNAGRA

MAIS (BE & FR) : OTA



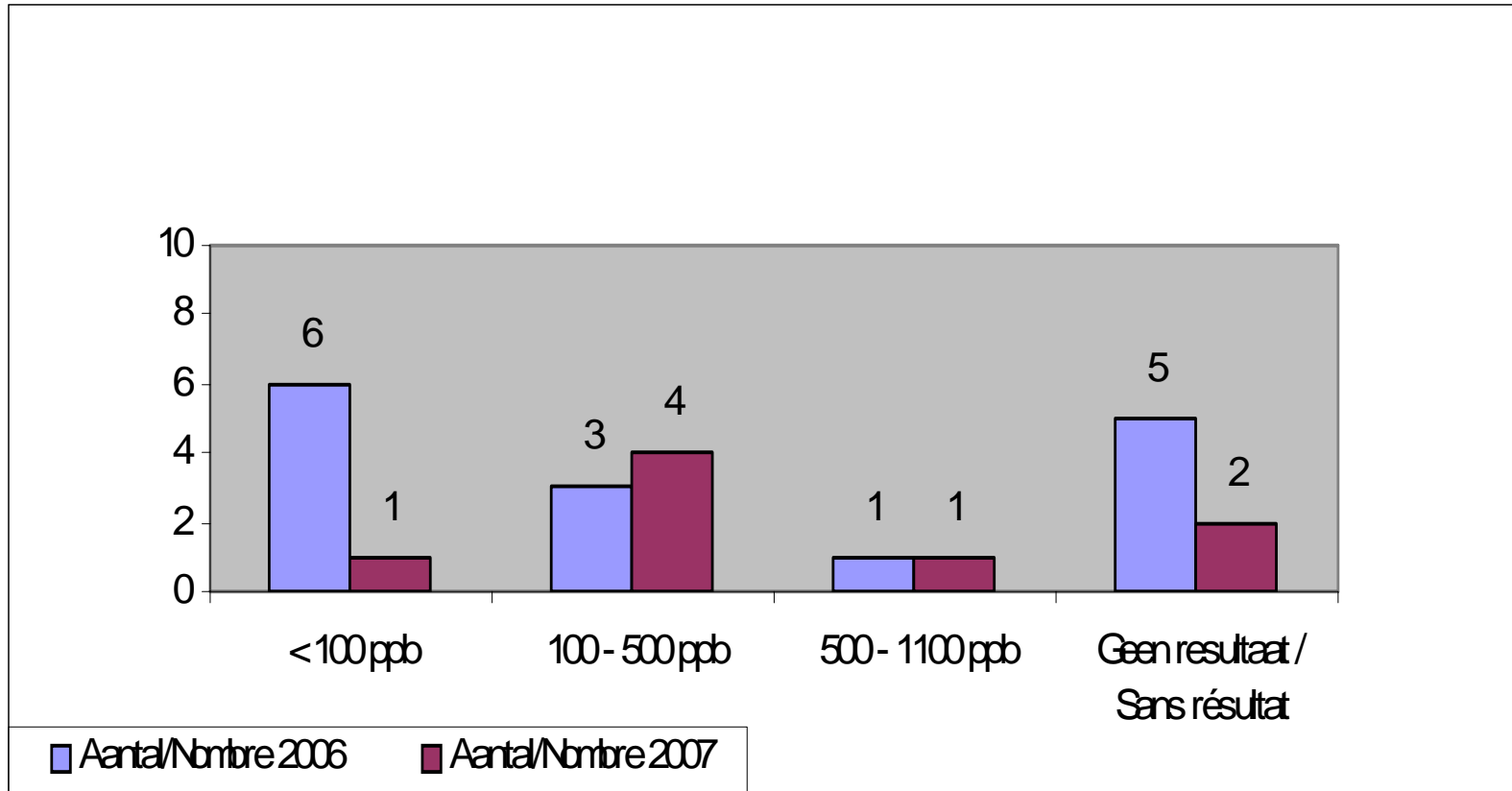
SYNAGRA

MAIS (BE & FR) : RESIDUS PESTICIDES



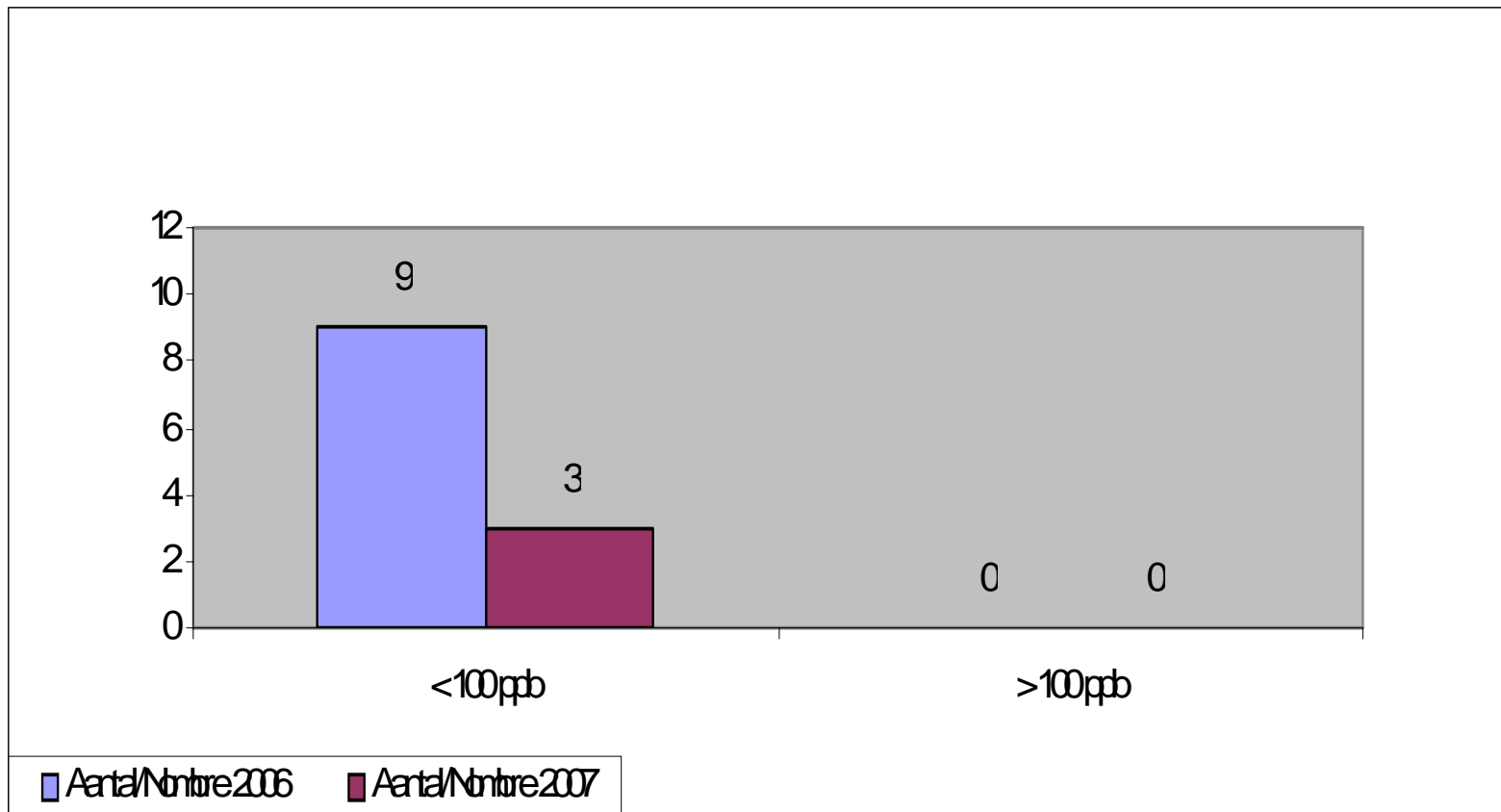
SYNAGRA

TRITICALE : DON

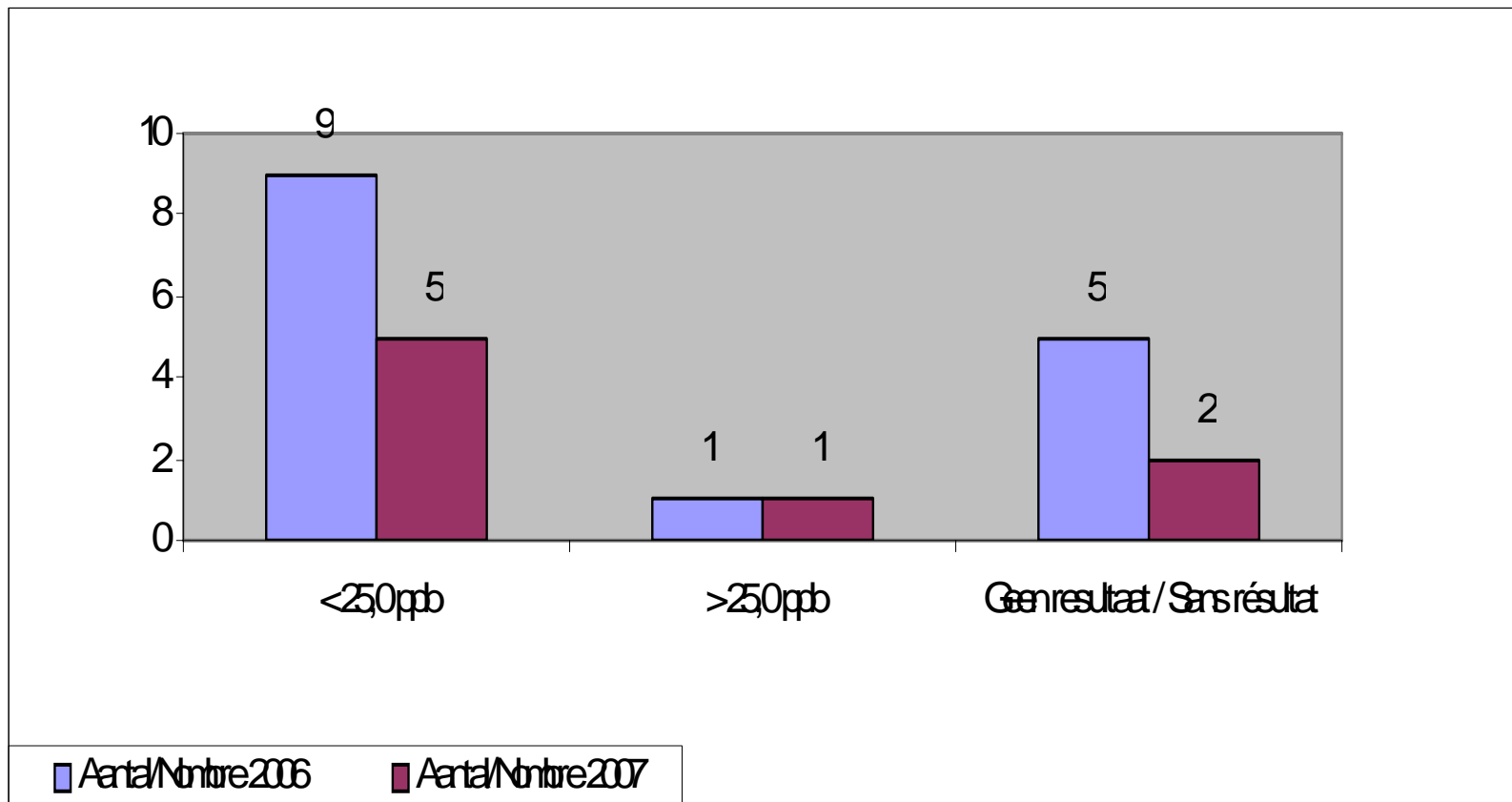


SYNAGRA

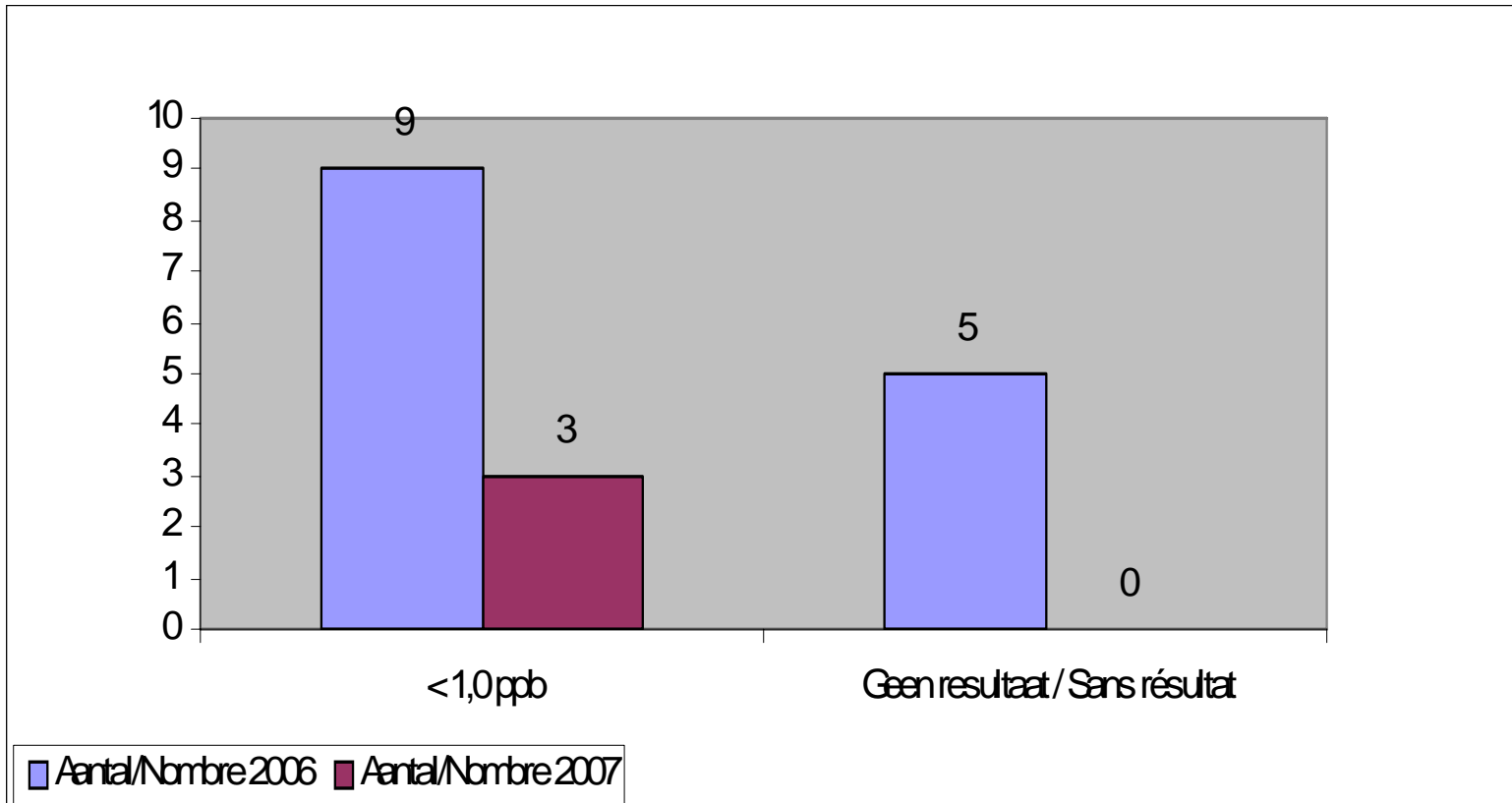
TRITICALE : FUM B1 & B2



TRITICALE : ZEA

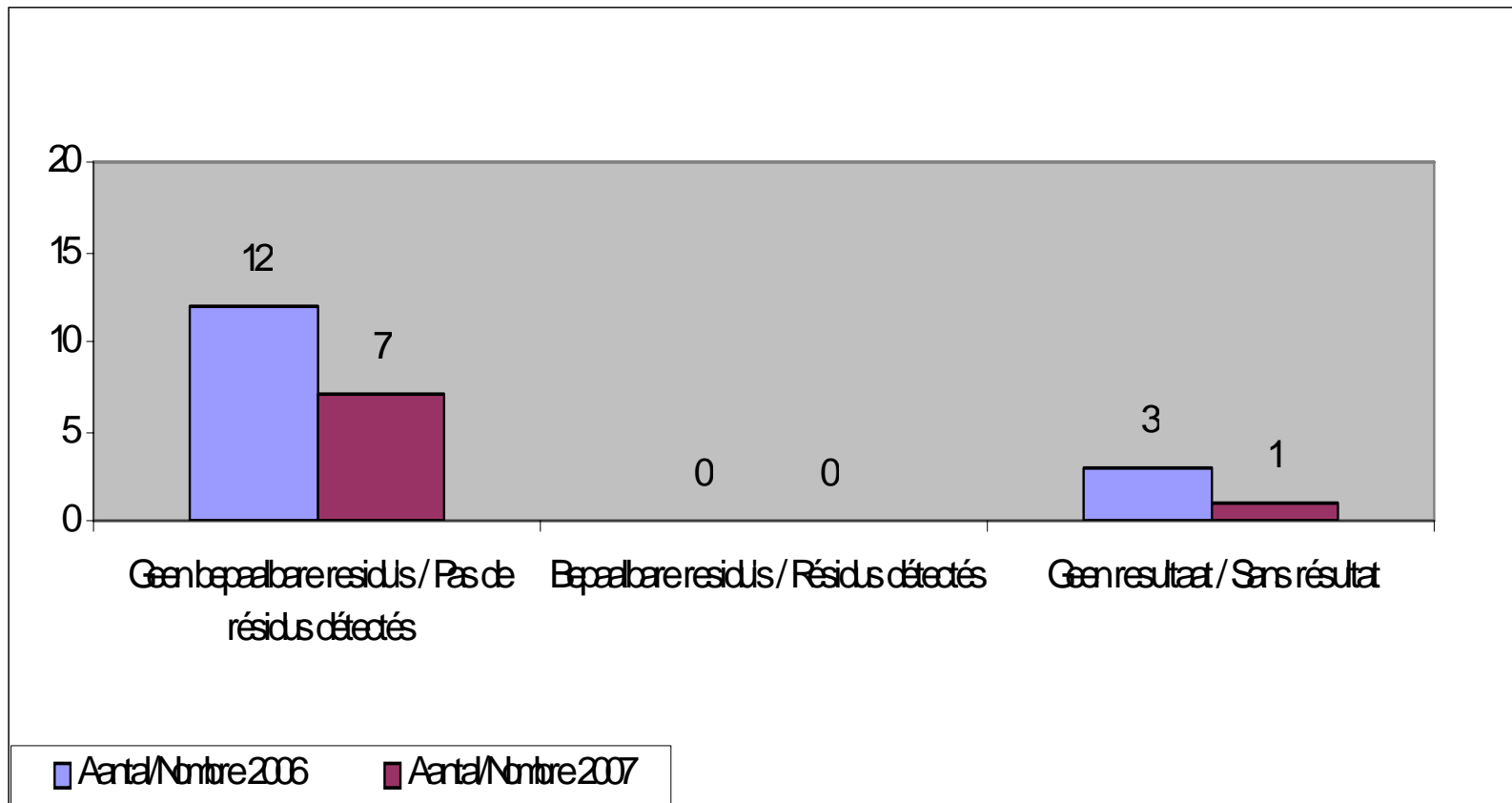


TRITICALE : OTA

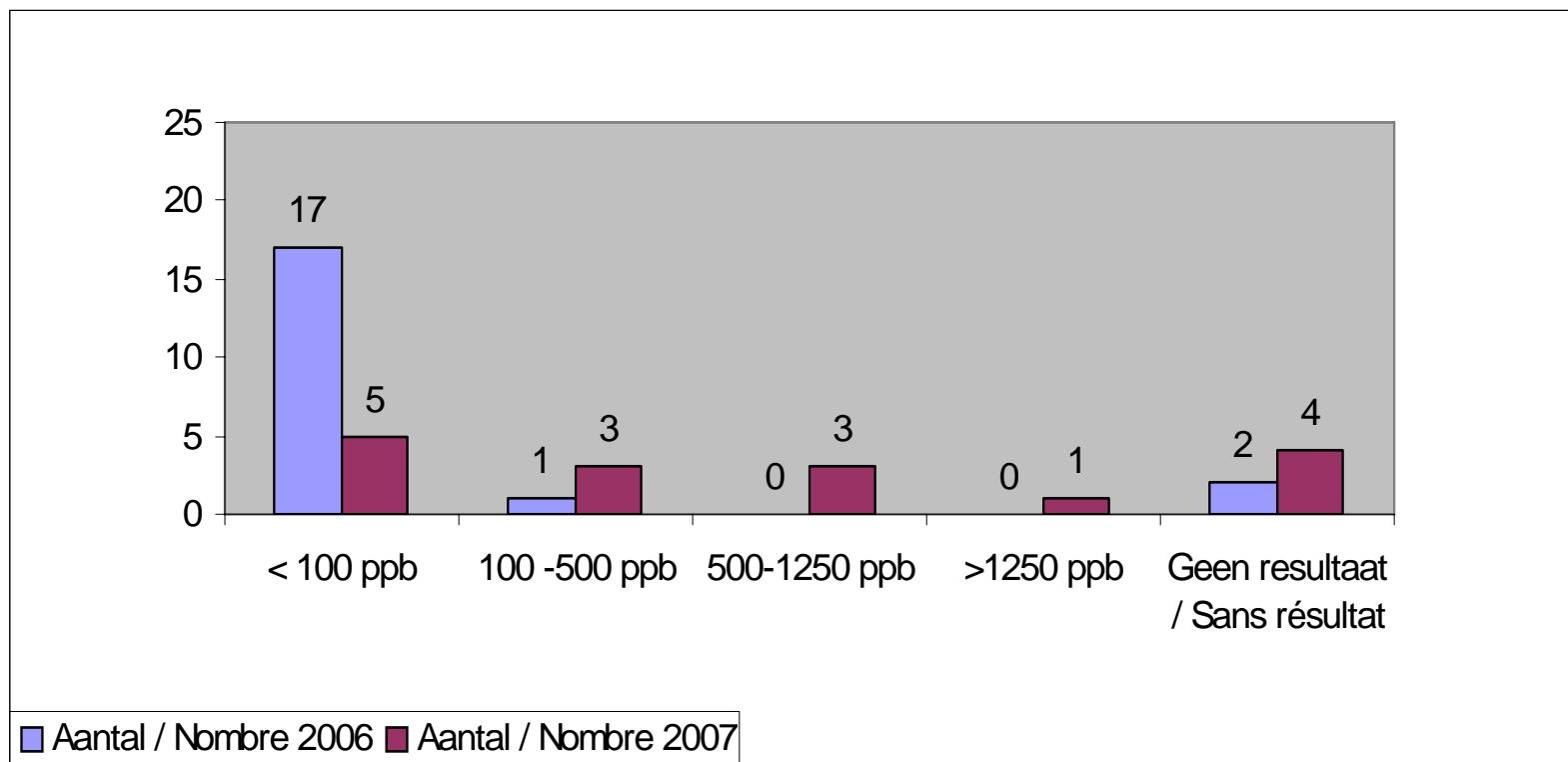


SYNAGRA

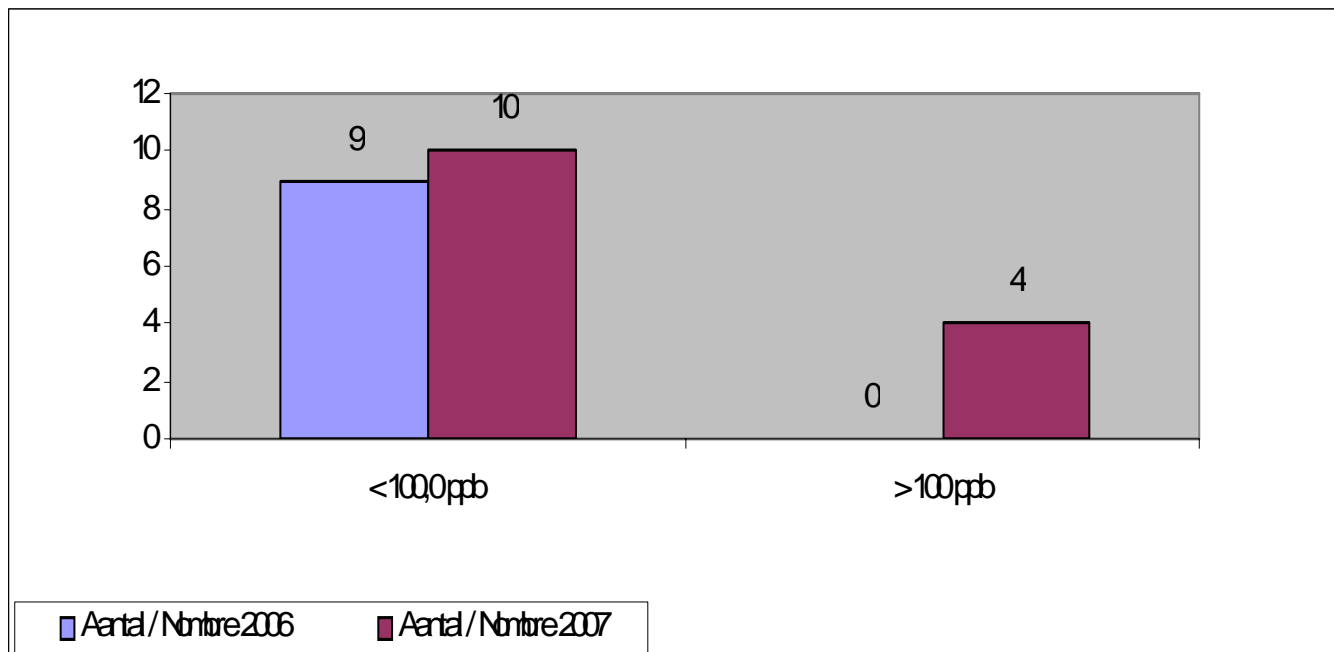
TRITICALE : RESIDUS PESTICIDES



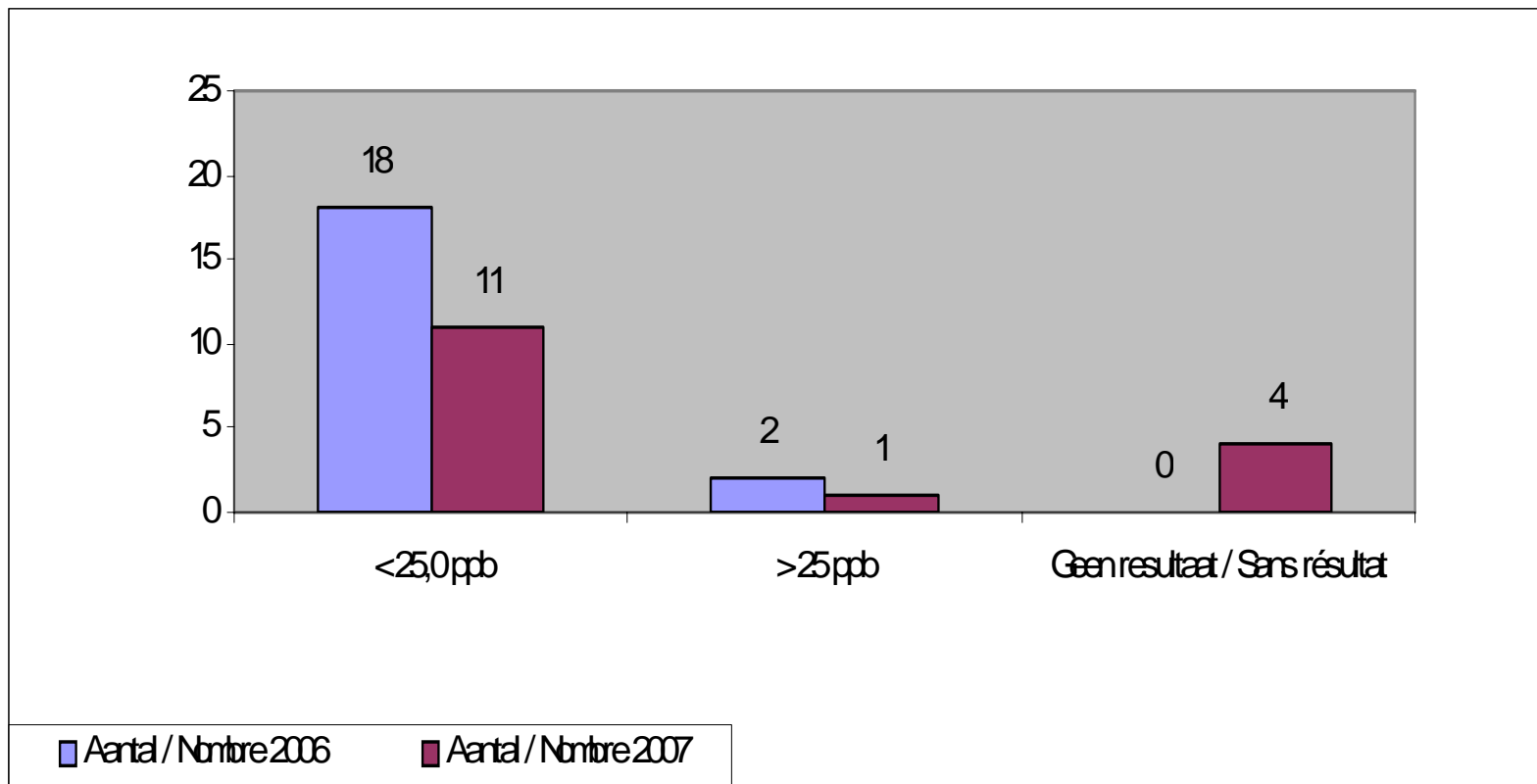
SPELT – EPEAUTRE : DON



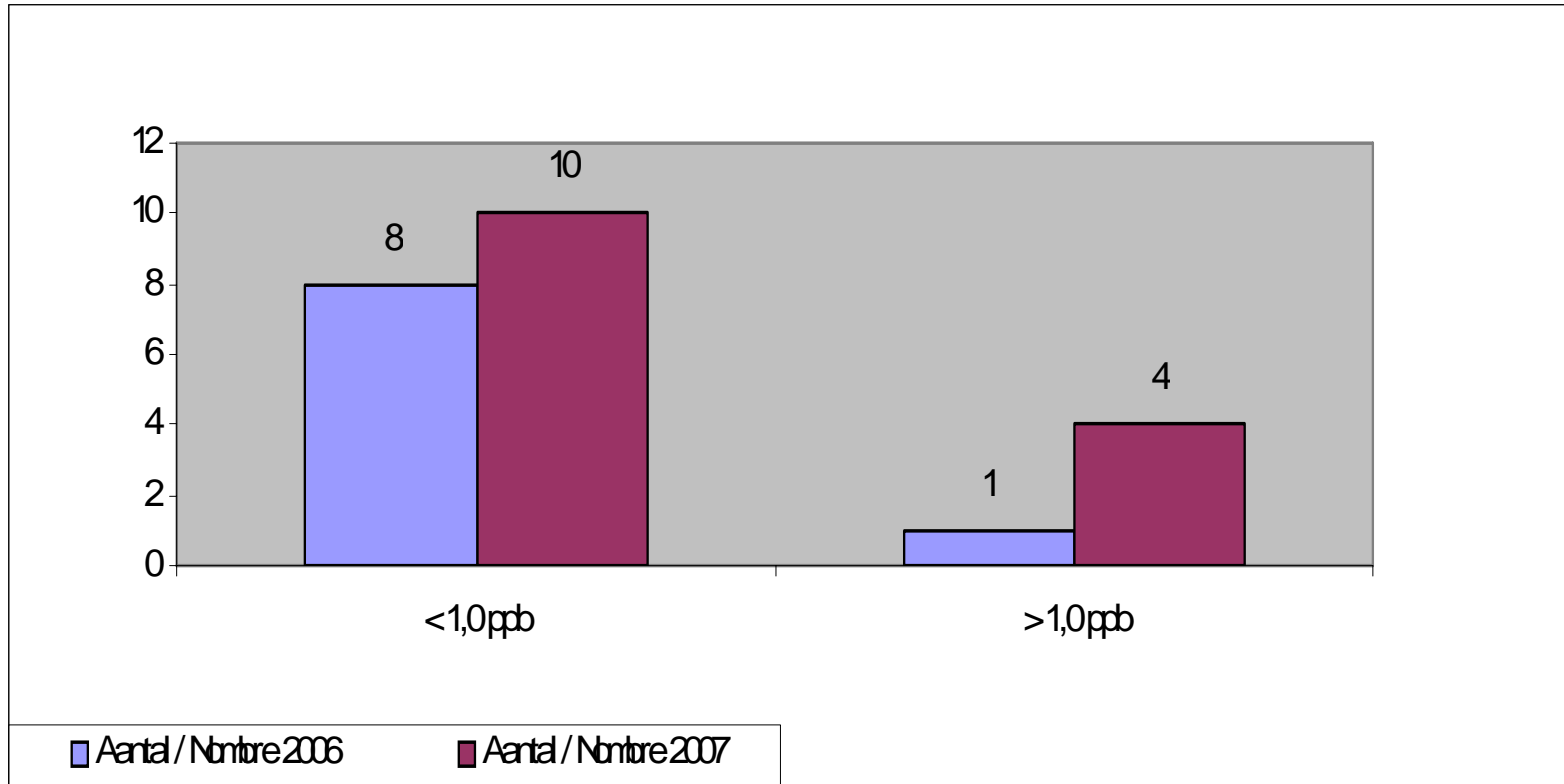
SPELT – EPEAUTRE : FUM B1 & B2



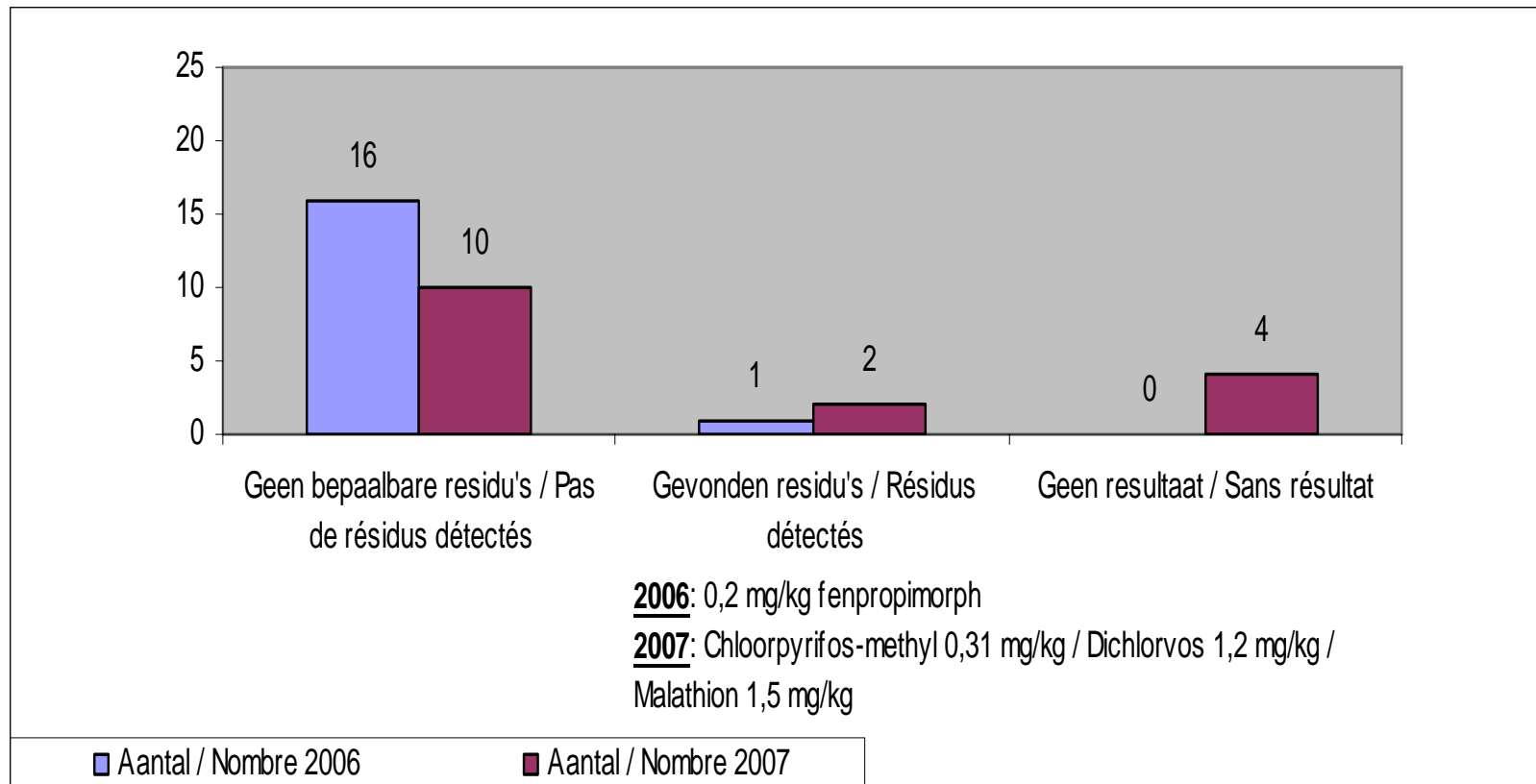
SPELT – EPEAUTRE : ZEA



SPELT – EPEAUTRE : OTA

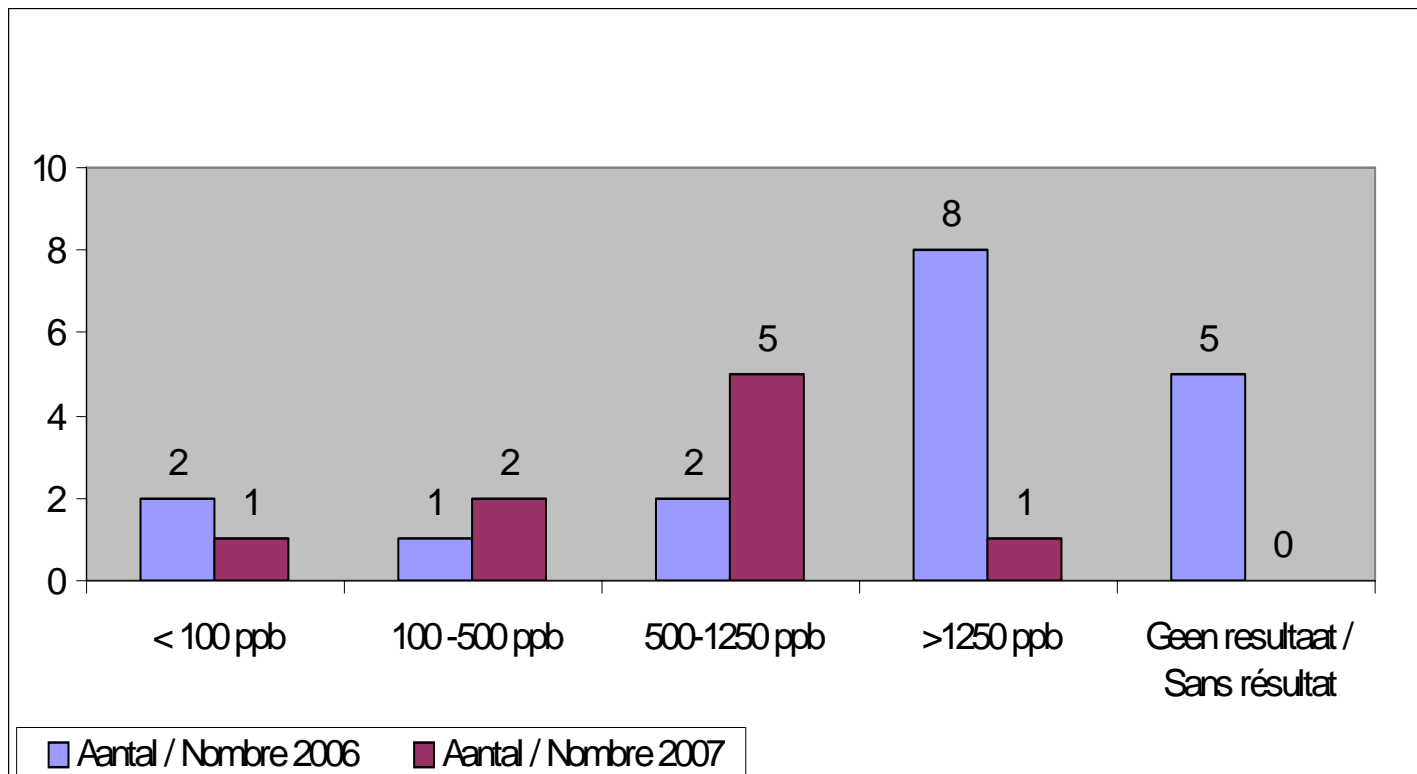


SPELT – EPEAUTRE : RESIDUS PESTICIDES

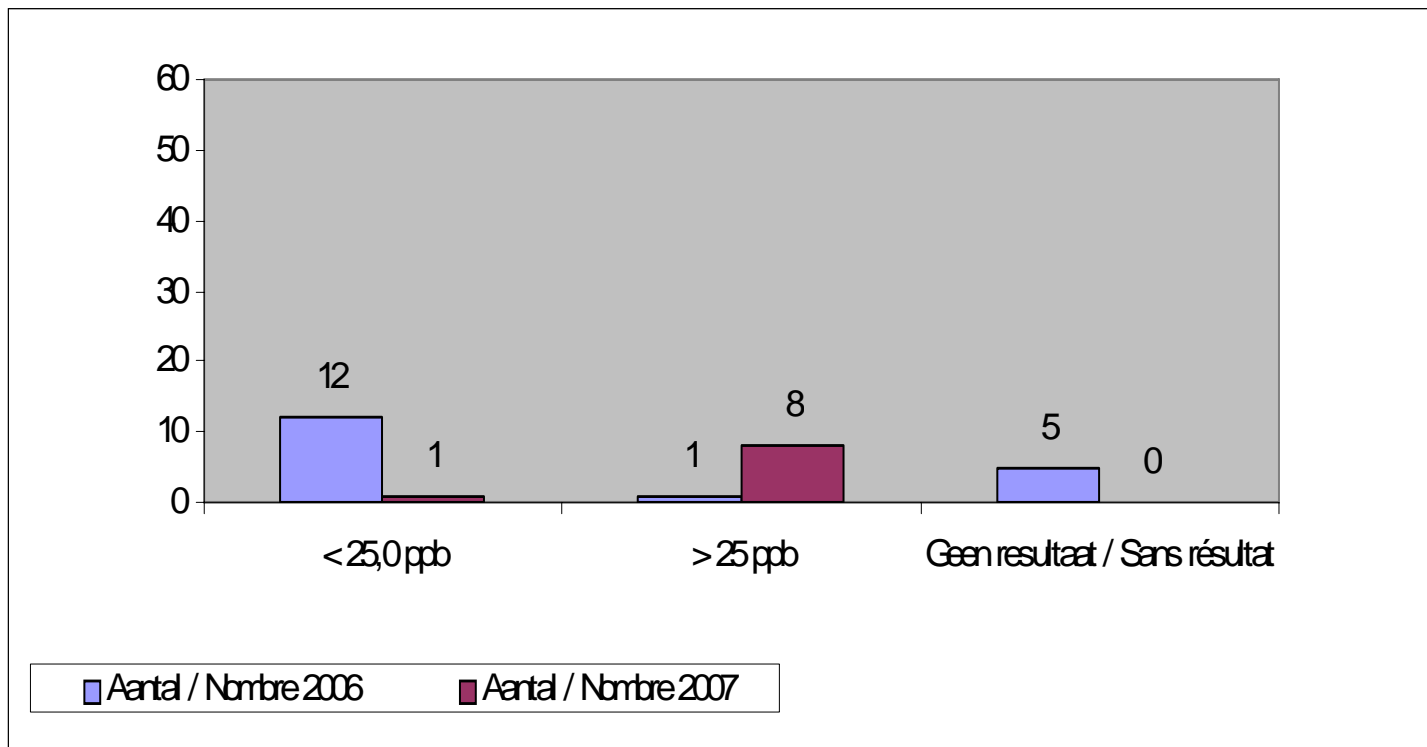


SYNAGRA

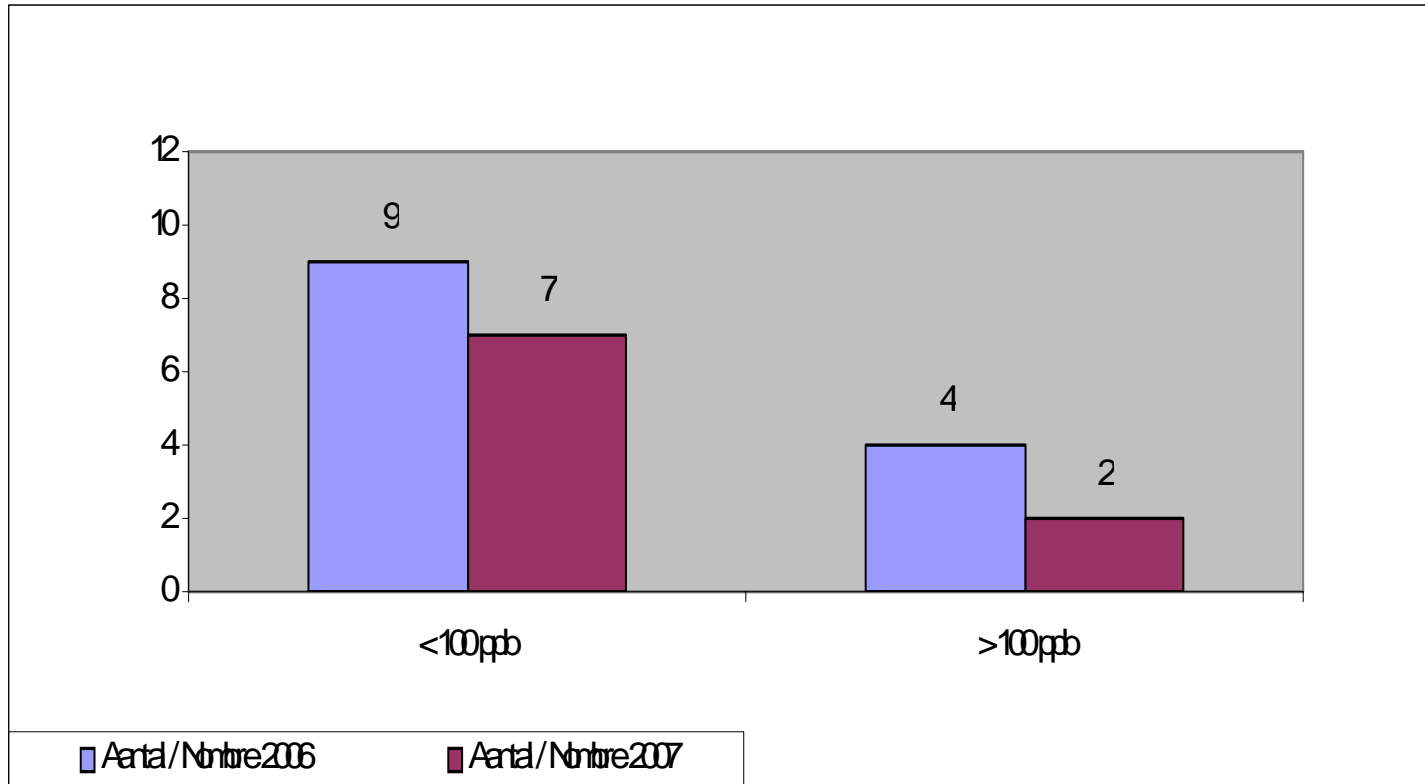
MAIS CCM : DON



MAIS CCM : ZEA



MAIS CCM : FUM B1 & B2



MAIS CCM : OTA

